

# Volkswagen Genuine Parts



**Volkswagen**



## Our promise to you.

To maintain the highest possible quality, every part made at Volkswagen's world-class facilities is subjected to hours of rigorous testing as well as endless research and development. Why? Because at Volkswagen, the safety and satisfaction of our customers come first.

The accuracy of the fit goes beyond mere measurements – from the screws for fastening individual parts, to the complex control units for vehicle electronics, every Volkswagen Genuine Part carries the accumulated know-how of the global brand. Every step of the process, from research and development to the distribution of parts, is performed either by Volkswagen or under our guidance and supervision. Another significant advantage of Volkswagen Genuine Parts is their compatibility with all other materials used by Volkswagen. This eliminates the possibility of damage to other parts of your Volkswagen, like the paint-work, synthetics and rubber, or even worse, metal corrosion, which can occur when using generic or unapproved products.

This convergence of expertise means that Volkswagen can guarantee the quality of every part we sell and we can promise you that our parts will function reliably in any situation.





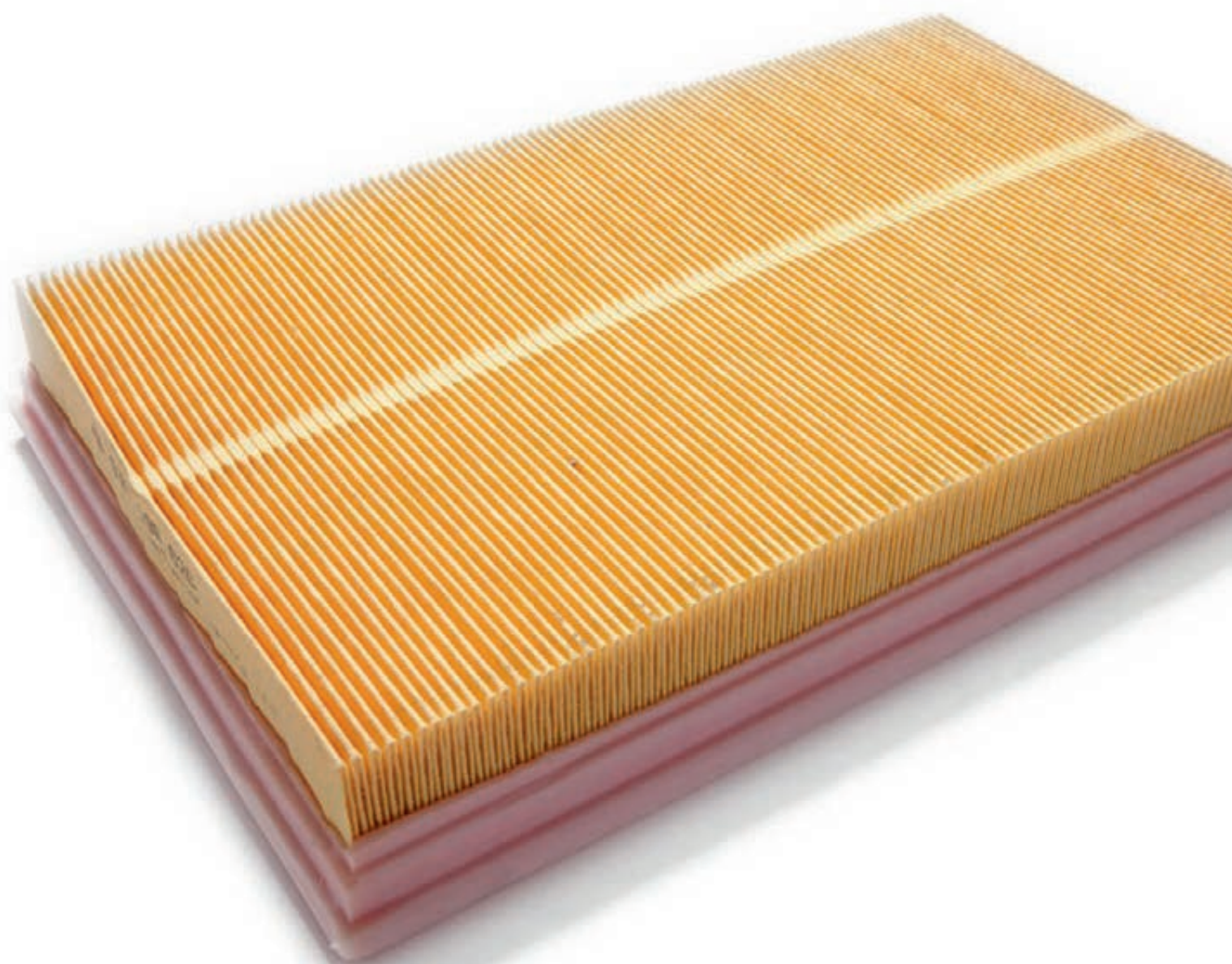
# Genuine Batteries.

## Did you know?

- + The battery is the car's major power supply.
- + As well as being the main component in starting the engine, the battery serves as a storage device for the energy produced by the alternator during the drive.
- + Breakdown statistics show that battery failure is the major cause of problems on the road, so it's very important to ensure that the battery, a typical wear part, is suited to the needs of the car in question.
- + A car battery should be replaced approximately every 4 years.


## Why choose Volkswagen Genuine Batteries?

- Genuine Batteries have a low self-discharge rate throughout service life.
- They have an acid level indicator on the exterior to check the battery's condition.
- Genuine Batteries offer outstanding value for money as only high-quality materials are used in their manufacture ensuring consistent performance throughout service life.



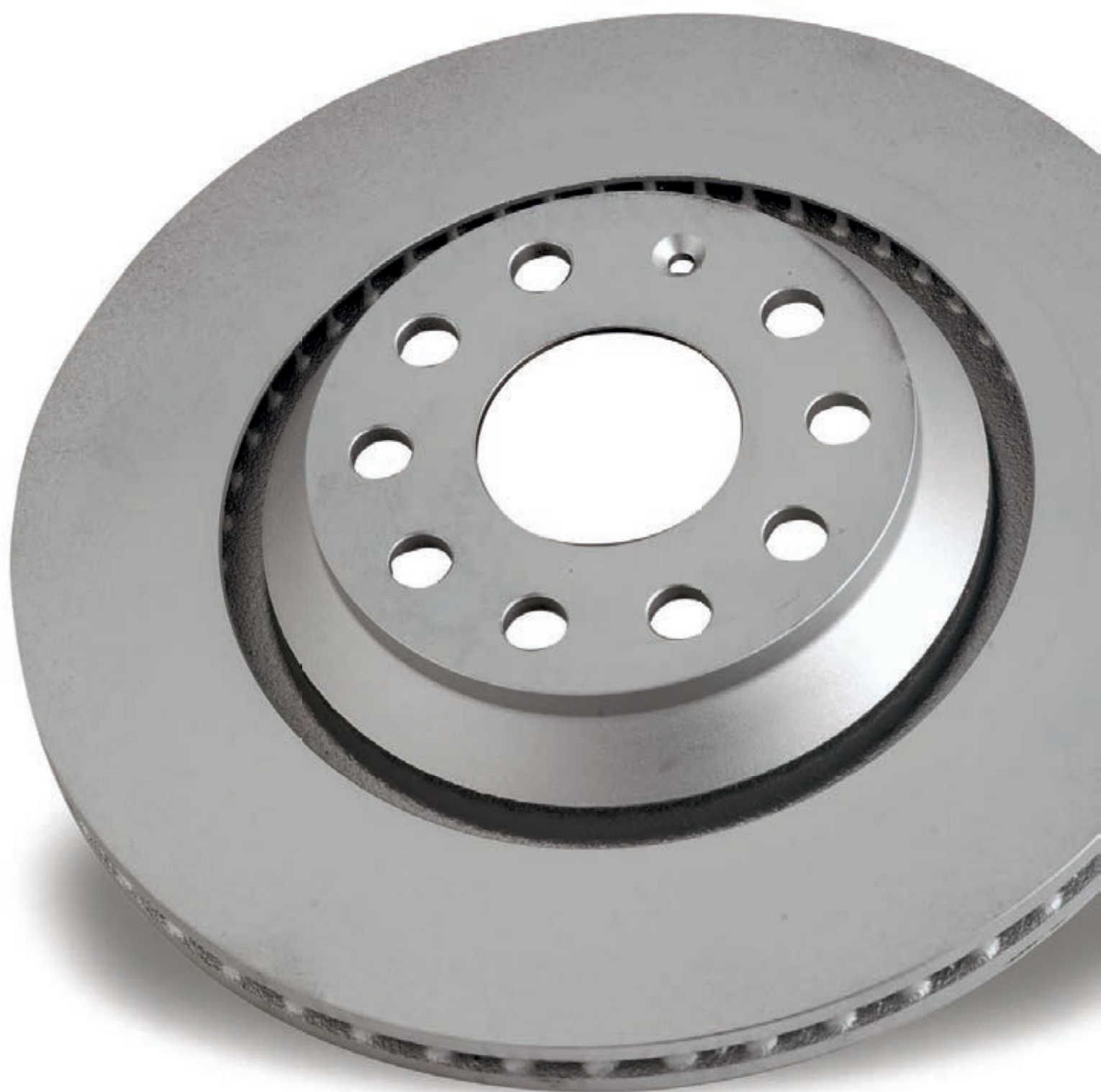
## Genuine Air Filters.

### Did you know?

- 
- + Air filters intercept particulate matter in the intake air before it can be drawn into the engine's combustion chambers.
  - + If dirt particles end up in the engine due to inadequately sealed or poorly fitting filters, they act like sandpaper, damaging components such as piston rings, bearings, valves and cylinder walls.
  - + The engine's performance and torque are directly dependent on how much air can be fed into the engine. The air filter has a controlling effect on air supply.
  - + Good air filters have a service life of between approximately 80,000 km and 100,000 km. Beyond this range, air flow decreases rapidly, resulting in poorer engine performance, as well as higher fuel consumption and emission levels.

### Why choose Volkswagen Genuine Air Filters?

- Each Volkswagen Genuine Air Filter is matched to each Volkswagen engine type so that filtering and air regulation can be precisely metered.
- Highly reliable, Volkswagen Genuine Air Filters ensure that the engine maintains optimum performance throughout service life.





# Genuine Brakes.

## Did you know?

- + A vehicle's braking system is its number one safety component and is absolutely essential for driving safety. It must perform flawlessly in order to ensure rapid and reliable responsiveness especially in hazardous situations.
- + Vehicle handling, vehicle weight, speed, and the quality of components all play a decisive role in the braking process.
- + If the brakes are worn down more on one side of the vehicle than the other, there may be a greater risk of skidding.
- + Brake discs and pads are subject to the most extreme wear and tear. If either of these two components is worn away, they should be replaced immediately.


## Why choose Volkswagen Genuine Brakes?

- To ensure optimal safety across a wide range of climatic conditions, Volkswagen Genuine Brakes are designed specifically to match each vehicle's weight, top speed and overall handling.
- This means that Volkswagen Genuine Brake discs and wear-resistant pads vary according to the type of Volkswagen used.
- As well as keeping safety intact, Volkswagen Genuine Brakes can withstand punishing conditions, operate quietly and smoothly, and provide long service life.



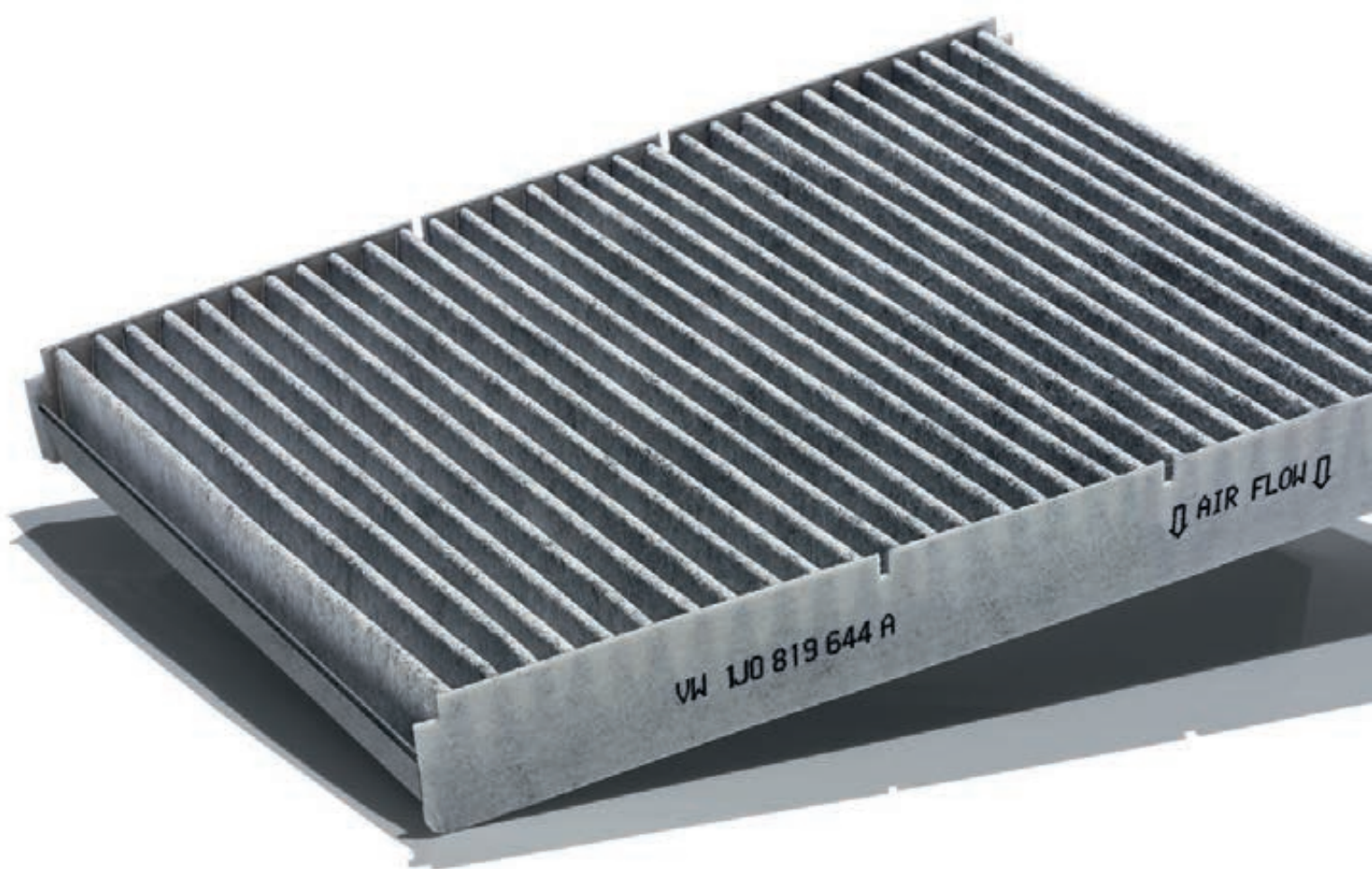
# Genuine Headlights.

## Did you know?

- 
- + 'See and be seen' is the essential principle of traffic safety. In order to ensure that visibility and recognition occur before it's too late, you need first-class lighting.
  - + Even people with normal eyesight have only about five percent of their daytime visual capacity.
  - + Almost half of all fatal accidents occur at night. A darkly clothed pedestrian, for example, will first be seen by an approaching motorist at a distance of 25 metres.  
(Source: Federal Statistical Office of Germany)
  - + In most newer vehicles, the headlights are equipped with H7 lamps, among the most powerful kind. Their operational life is approximately 530 hours.

## Why choose Volkswagen Genuine Headlights?

- Volkswagen Genuine Headlights are the only choice when it comes to a Volkswagen vehicle's lighting needs.
- They are developed in a perfectly balanced manner maintaining constant light output in accordance with the ECE standards, while cheaply made bulbs often become clogged, resulting in weaker output.





# Genuine Filters.

## Did you know?

- + Dust and pollen filters prevent pollen and fine dust from penetrating the vehicle interior. Pollen is not only a concern for people with allergies. If you sneeze while driving at 50 km/h, you're flying blind for 13m.
- + If the filter is clogged, the air in the vehicle will contain more dust, soot and micro-organisms. This can cause fatigue which can lead to a lack of concentration while sitting at the wheel.
- + Blower performance can be reduced by clogged filters causing windows to fog up more quickly.

## Why choose Volkswagen Genuine Filters?

- To maintain a comfortable and safe interior climate, Volkswagen Genuine Dust and Pollen Filters offer effective removal of airborne contaminants.
- They consist of two layers: the first removes large dust and soot particles and the second removes a large number of fungus spores and harmful pollen.
- Volkswagen Genuine Filters also remove gaseous pollutants, playing a big role in transforming ozone within the vehicle into oxygen and reducing overall odours.
- This makes for a pleasant, safe drive – one that any driver would expect from a Volkswagen.



# Genuine Shock Absorbers.

## Did you know?

- + Worn-out shock absorbers significantly increase the braking distance required for an emergency stop.
- + Driver assistance systems like ABS and ESP only work properly when the suspension system delivers correct "information". Malfunctioning shock absorbers distort this information.
- + Statistics show that one out of every seven drivers on the road has a vehicle with defective shock absorbers.  
(source: [www.auto-reporter.net](http://www.auto-reporter.net))
- + Shock absorbers don't wear out from one day to the next – it's a gradual process. Not surprisingly, their slow deterioration often goes unnoticed. Shock absorbers should be checked every 60,000 km to 80,000 km.

## Why choose Volkswagen Genuine Shock Absorbers?

- Volkswagen Genuine Shock Absorbers offer stability and safety like no other, allowing the driver to negotiate corners comfortably, even at high speeds.
- They react superbly on uneven roads and reduce vibrations to the absolute minimum.
- They are also a preventative measure in stopping premature wear and tear in other vehicle parts such as the tyres.
- Designed specifically for each Volkswagen model, Volkswagen Genuine Shock Absorbers need to work with the entire range of Genuine suspension parts to achieve optimum performance.





## Genuine Spark Plugs.

### Did you know?

- + Spark plugs are required to ignite a compressed mixture of fuel and air in the combustion chamber at a precisely defined moment. An ignition that occurs too early or too late can negatively affect performance and fuel consumption, and even cause engine damage.
- + Spark plugs need to produce an average of 3,500 sparks per minute while withstanding temperature changes of 100° to 3,000°C and pressure changes of 0.9 to 30 bar. At a certain point, used spark plugs can no longer manage this.
- + When a vehicle is predominantly driven over short distances, or when the engine is often operated at maximum output, spark plug replacement intervals are shorter than specified.



### Why choose Volkswagen Genuine Spark Plugs?

- Volkswagen Genuine Spark Plugs will ensure that the vehicle works reliably and at peak performance.
- They reduce the voltage required for ignition and offer greater reliability between the spark plug's replacement intervals.
- Smooth running performance, precise engine responsiveness and reduced fuel consumption are just some of the benefits of fitting a Volkswagen vehicle with Volkswagen Genuine Spark Plugs.



# Genuine Cambelts.

## Did you know?

- + During its product lifecycle, the cambelt covers an enormous distance inside the engine. This corresponds to more than six times around the globe.
- + Even after an extended service period, cambelts should not stretch. If stretched, the engine timing would be off, resulting in a rise in fuel consumption and fuel emissions.
- + If the cambelt snaps, the pistons will strike the valves that are left open, bending or breaking them. At the very least, it will then be necessary to install a new cylinder head.

## Why choose Volkswagen Genuine Cambelts?





- A part that is largely responsible for the precise operation of the vehicle's engine needs to be of precise quality in manufacturing, which is just what is expected from German engineered Volkswagen parts.
- Volkswagen Genuine Cambelts are made of high-strength synthetic glass fibres, with a wear-resistant coating in order to withstand the rigours of frequent use and extreme climates. This will ensure consistent performance throughout service life.
- With impeccable heat and moisture resistance, Volkswagen Genuine Cambelts are essential in prolonging engine life.





## Genuine Windshields.

### Did you know?

-  A windshield must always afford impeccable visibility. After all, road safety is only possible for those who can see everything in front of them.
-  Along with its powerful adhesive, the windshield is an active, weight-bearing component of the vehicle's body.
-  Even tiny holes, scratches or cracks can destroy the windshield's complex structure, which consequently effects airbag functioning.
-  Upon deployment, the front passenger airbag is supported from behind by the inner side of the windshield which must therefore be capable of withstanding such a load.



### Why choose Volkswagen Genuine Windshields?

- Volkswagen Genuine Windshields take into account every aspect of each Volkswagen vehicle, and are, therefore, the most precise fit available for Volkswagens.
- Benefits include UV protection, easy repair and complete insurance cover.



## Genuine Wiper Blades.

### Did you know?

- + Wiper blades contribute significantly to traffic safety. Despite this, no other safety-related component receives so little attention.
- + The rear wiper blade wears out just like the front wiper blades. All wiper blades should be changed at the same time.
- + Wiper blades put in an impressive performance. The average wiper blade travels roughly 800 km across the surface of the windscreen every six months.
- + When wiper blades are damaged, they leave streaks or a dirty film on the windscreen, and they can squeak or skip across the glass.

### Why choose Volkswagen Genuine Wiper Blades?

- Volkswagen Genuine Wiper Blades clean in all types of precipitation and temperatures without leaving windshield streaks.
- They are each perfectly adapted to the curvature of Volkswagen Genuine Windshields, and offer a smooth glide and consistent performance.
- They also each include an integrated wear indicator so that replacement can be anticipated.



Volkswagen Genuine Parts

Visit us at [vw.co.za](http://vw.co.za)

© Volkswagen of South Africa