



# Polo Vivo



# Polo Vivo Hatch Specification

X = standard O = optional - = not available

Polo Vivo Hatch Specification	55kW Trendline	63kW Comfortline	63kW Mswenko	77kW Comfortline Tiptronic®	77kW Highline	81kW TSI GT
<b>Engine</b>						
Cylinders	4	4	4	4	4	3
Capacity (cm <sup>3</sup> )	1398	1398	1398	1598	1598	999
Bore/Stroke (mm)	76,5 / 75,6	76,5 / 75,6	76,5 / 75,6	76,5 / 86,9	76,5 / 86,9	74.5 / 76.4
Valves (per cylinder)	4	4	4	4	4	4
Compression Ratio	10.5 : 1	10.5 : 1	10.5 : 1	10.5 : 1	10.5 : 1	-
Fuel Injection	X	X	X	X	X	X
CO <sub>2</sub> Emissions (g/km)	132	140	140	144	147	114
<b>Transmission</b>						
5-speed manual	X	X	X	-	X	-
6-speed manual	-	-	-	-	-	X
6-speed manual Tiptronic®	-	-	-	X	-	-
<b>Performance</b>						
Power output (kW @ r/min)	55 @ 4800	63 @ 5000	63 @ 5000	77 @ 5250	77 @ 5250	81 @ 5000
Torque (Nm @ r/min)	130 @ 3,750	132 @ 3,750	132 @ 3,750	153 @ 3800	153 @ 3800	200 @ 2000
<b>Fuel consumption (litres / 100 km)*</b>						
Extra-urban	4,5	4,8	4,8	4,9	4,8	4
Urban cycle	7,6	7,9	7,9	8,2	8,5	5,5
Combined	5,7	5,9	5,9	6,1	6,2	4,8
<b>Performance:</b>						
Top speed (km/h)	171	177	177	188	188	196
<b>Running Gear</b>						
<b>Front axle:</b>						
Lowered suspension	-	-	-	-	-	X
Raised suspension (15mm)	-	-	-	X	-	-
Suspension struts, wishbone	X	X	X	X	X	X
<b>Rear axle:</b>						
Suspension struts, toe correcting, torsion beam, trailing arm axle	X	X	X	X	X	X
<b>Brakes</b>						
Brake fluid warning indicator	X	X	X	X	X	X
Brake pressure regulator	X	X	X	X	X	X
Front discs	X	X	X	X	X	X
Rear drum brakes	X	X	X	X	X	X
ABS with EBD	X	X	X	X	X	X
<b>Wheelrims / tyres</b>						
Full wheel trim covers	X	X	X	X	-	-
Steel spare wheel for temporary use	-	-	-	-	X	X
Full-size steel spare wheel	X	X	X	X	-	-
Wheel cover 5J X 14 steel 175/70 R 14	X	X	-	X	-	-
"Estrada" 6J X 15 alloy 185/60 R 15	O	O	-	O	-	-
"Rivazza" 7J X 16 alloy 215/45 R 16	-	-	-	-	X	-
"Portago" 7J X 16 alloy 195/55 R 16 in anthracite	-	-	X	-	-	-
"Mirabeau" 7J X 17 alloy 215/40 R17	-	-	-	-	-	X
<b>Dimensions / Capacities</b>						
Fuel tank 45l	X	X	X	X	X	X
Luggage compartment 280l	X	X	X	X	X	X
(seats folded 952l)	X	X	X	X	X	X
DIN Kerb Weight (kg) (Kerb weight may vary depending on options fitted to vehicle)	1063	1066	1066	1102	1081	1092
Gross Vehicle Mass (kg)	1530	1540	1540	1570	1540	1530

# Polo Vivo Hatch Specification

X = standard O = optional - = not available

Polo Vivo Hatch Specification	55kW Trendline	63kW Comfortline	63kW Mswenko	77kW Comfortline Tiptronic®	77kW Highline	81kW TSI GT
<b>Dimensions / Capacities (continued)</b>						
Length (mm)	3972	3972	3972	3972	3972	3972
Width (mm)	1682	1682	1682	1682	1682	1682
Height (mm)	1462	1462	1462	1462	1462	1447
Track - front (mm)	1463	1463	1463	1463	1463	1463
Track - rear (mm)	1456	1456	1456	1456	1456	1456
Turning circle (m)	10,6	10,6	10,6	10,6	10,6	10,6
Wheel base (mm)	2470	2470	2470	2470	2470	2470
Ground Clearance (mm)	143	143	143	143	143	128
Towing Capacity Braked (kg)	-	1000	1000	1000	1000	1000
Towing Capacity Unbraked (kg)	-	570	570	580	570	580
<b>Audio &amp; Communication</b>						
Radio 140G SD/USB/Bluetooth with B-sting/2 Speakers and 2 Tweeters	X	X	-	X	-	-
Radio 340G SD/USB/Bluetooth/App-Connect with B-sting/2 Speakers and 2 Tweeters	-	O	-	O	-	-
Radio 340G SD/USB/Bluetooth/App-Connect with B-sting/4 Speakers and 2 Tweeters	-	-	X	-	X	X
Sound Package (Forces RAJ on the CL models)	-	O	O	O	O	-
<b>Safety</b>						
Driver and passenger airbags	X	X	X	X	X	X
ISOFIX child seat mounting points in rear	X	X	X	X	X	X
Childproof locks on rear doors	X	X	X	X	X	X
High level brake light	X	X	X	X	X	X
Front fog lights	O	X	X	X	X	X
Rear Park Distance Control	O	O	O	O	O	O
Parking package (rear-view camera with rear PDC)	-	O	O	O	O	O
Electronic Stability Control	O	O	O	X	X	X
Tyre Pressure Monitor	O	O	O	X	X	X
Lights and Vision Package (Rain Sensor + Dusk Sensor)	-	O	O	O	O	O
LED Headlights Package (incl. Lights and Vision Package) forces PXX on Comfortline Manual	-	O	O	O	O	O
<b>Security</b>						
Immobiliser	X	X	X	X	X	X
Alarm with Remote Central locking	X	X	X	X	X	X
Ultrasonic alarm sensors	X	X	X	X	X	X
We Connect Go	X	X	X	X	X	X
<b>Mirrors</b>						
Aspherical driver's side	X	X	X	X	X	X
Black exterior mirrors	X	-	-	-	-	-
Body-coloured exterior mirrors	-	X	X	X	X	X
Manual and remotely adjustable mirrors from inside	X	X	X	X	X	X
<b>Windows</b>						
<b>X</b>						
Tinted glass all round	X	X	X	X	X	X
Heated rear window	X	X	X	X	X	X
Front electric windows	X	X	X	X	X	X
<b>Wiper System</b>						
Intermittent wiper	X	X	X	X	X	X
Rear wiper	X	X	X	X	X	X
<b>Interior Features</b>						
Heating and fresh air ventilation system	X	X	X	X	X	X
Cup holders, 2 integrated into centre console	X	X	X	X	X	X

# Polo Vivo Hatch Specification

X = standard O = optional - = not available

Polo Vivo Hatch Specification	55kW Trendline	63kW Comfortline	63kW Mswenko	77kW Comfortline Tiptronic®	77kW Highline	81kW TSI GT
<b>Interior Features (continued)</b>						
Digital clock	X	X	X	X	X	X
Digital trip recorder	X	X	X	X	X	X
Co-driver vanity mirror	X	X	X	X	X	X
Electronic rev counter	X	X	X	X	X	X
Front door pockets	X	X	X	X	X	X
Height-adjustable steering column	X	X	X	X	X	X
Reach-adjustable steering column	X	X	X	X	X	X
3-spoke steering wheel	X	X	-	X	-	-
Multi-function Steering Wheel	-	X	-	X	-	-
3-spoke mufu leather steering wheel with aluminium inserts	O	O	X	O	X	X
Painted upper centre console - Anthracite	X	X	X	X	X	-
Painted upper centre console - Colour	-	-	-	-	-	X
Anthracite sunvisors	-	-	X	-	-	X
Anthracite headlining/cover and A,B,C post uppers	-	-	X	-	-	X
Leatherette gearshift boot	X	X	X	X	X	X
High tone hooter	X	X	X	X	X	X
Lights on warning buzzer	X	X	X	X	X	X
Manual anti-dazzle rear-view mirror	X	X	X	X	X	X
Power steering	X	X	X	X	X	X
Manually controlled airconditioner	X	X	X	X	X	X
Multi-function Display	-	X	X	X	X	X
Cruise control	O	O	O	O	O	X
Sport pedal cluster	-	-	-	-	-	X
Loose-lay carpets mats	O	O	O	O	O	X
Smokers Package	O	O	O	O	O	O
<b>Seats</b>						
Height-adjustable front head restraints	X	X	X	X	X	X
Rear head restraints	X	X	X	X	X	X
Rear seat bench backrest - fixed folding	X	X	X	X	X	X
Height-adjustable driver seat	-	X	X	X	X	X
"Tradition" cloth seat trim	X	-	-	-	-	-
"City" cloth seat trim	-	X	-	X	-	-
"Ocean Blue" seat trim	-	-	X	-	-	-
"Cable" cloth seat trim	-	-	-	-	X	-
"Space" cloth seat trim	-	-	-	-	-	X
Front Sports Seats	-	-	-	-	-	X
"Vienna" leather trim seat package (Package includes leather-covered seat material with other high quality materials, leather mufu steering wheel, gearshift lever and gearknob)	-	O	-	O	O	O

# Polo Vivo Hatch Specification

X = standard O = optional - = not available

Polo Vivo Hatch Specification	55kW Trendline	63kW Comfortline	63kW Mswenko	77kW Comfortline Tiptronic®	77kW Highline	81kW TSI GT
<b>Exterior Features</b>						
Body-coloured bumpers	X	X	X	X	X	X
Black door handles	X	-	-	-	-	-
Body-coloured door handles	-	X	X	X	X	X
Black painted roof	-	-	X	-	-	-
Rear tailgate spoiler	-	-	-	-	-	X
Underbody guard	-	-	-	X	-	-
GT lettering on the tailgate, front grille and sides	-	-	-	-	-	X
Black side moulding	-	-	-	-	-	X
Sporty single-pipe exhaust system with chrome trim	-	-	-	-	-	X
Mswenko Styling Package	-	-	X	-	-	-
<b>Guarantees</b>						
Warranty 3-year / 120 000 km	X	X	X	X	X	X
Anti-corrosion Warranty (6-year)	X	X	X	X	X	X
15 000 km service intervals	X	X	X	X	X	X
Volkswagen EasyDrive Vehicle Maintenance Plan	O	O	O	O	O	O
Volkswagen EasyDrive Vehicle Service Plan	O	O	O	O	O	O
<b>Disclaimer</b>						
<p><b>Dimensions, capacities and abilities apply to standard vehicles from model year 21.</b>  <b>Actual consumption will vary with vehicle loading, driving style, climatic and road conditions.</b>  <b>The above information is effective as at 15 February 2021 and is subject to change.</b></p>						

# Prices & Options - Polo Vivo Hatch

Prices are inclusive of CO<sub>2</sub> tax and 15% VAT  
X = standard O = optional - = not available

Recommended Retail Prices	55kW Trendline	63kW Comfortline	63kW Mswenko	77kW Comfortline Tiptronic®	77kW Highline	81kW TSI GT
Retail Price	R220,300	R233,200	R246,900	R268,800	R262,900	R299,400
Metallic / Pearlescent Paint	No Cost	No Cost	No Cost	No Cost	No Cost	No Cost
Cruise Control	R2,100	R2,100	R2,100	R2,100	R2,100	X
Smokers Package	R350	R350	R350	R350	R350	R350
Floor Mats Front and Rear	R500	R500	R500	R500	R500	X
Sound package (Forces RAJ on the CL models)	-	R7,000	R7,000	R7,000	R7,000	-
Storage Package (Front Centre Armrest + Drawer under Drivers Seat)	-	R2,300	R2,300	R2,300	R2,300	R2,300
Safety Package (ESC + Tyre Pressure Monitor)	R2,700	R2,700	R2,700	X	X	X
Radio 340G SD/USB/MP3/Bluetooth/App-Connect with B-sting/2 Speakers & 2 Tweeters	-	R3,200	-	R3,200	-	-
"Vienna" leather trim package (Package includes leather-covered seat material, multi-function steering wheel, gearshift lever, gearknob and front sport seats)	-	R9,900	-	R9,900	R9,900	R9,900
"Estrada" 15" alloy wheels	R5,050	R5,050	-	R5,050	-	-
Front fog lights	R1,550	X	X	X	X	X
Rear Park Distance Control	R2,700	R2,700	R2,700	R2,700	R2,700	R2,700
Parking Package (rear-view camera with rear PDC)	-	R5,700	R5,700	R5,700	R5,700	R5,700
Lights and Vision Package (Rain Sensor + Dusk Sensor)	-	R4,200	R4,200	R4,200	R4,200	R4,200
LED Headlights Package (incl Lights and Vision Package) forces PXX on Comfortline Manual	-	R14,850	R14,850	R14,850	R14,850	R14,850
<b>Prices &amp; Options were effective as at 15 February 2021 and subject to change without prior notice.</b>						

# Prices & Options - Polo Vivo Hatch

Prices are inclusive of CO<sub>2</sub> tax and 15% VAT  
X = standard O = optional - = not available

<b>Volkswagen EasyDrive Vehicle Maintenance Plans</b>	<b>55kW Trendline</b>	<b>63kW Comfortline</b>	<b>63kW Mswenko</b>	<b>77kW Comfortline Tiptronic®</b>	<b>77kW Highline</b>	<b>81kW TSI GT</b>
Optional Maintenance Plan (3-year / 45 000 km)	R6,233					
Optional Maintenance Plan (4-year / 60 000 km)	R11,192					
Optional Maintenance Plan (5-year / 90 000 km)	R18,983					
Optional Maintenance Plan (5-year / 120 000 km)	R29,892					
Optional Maintenance Plan (6-year / 150 000 km)	R41,792					
Optional Maintenance Plan (6-year / 180 000 km)	R52,275					
Optional Maintenance Plan (7-year / 210 000 km)	R63,891					
Optional Maintenance Plan (8-year / 240 000 km)	R77,208					
Optional Maintenance Plan (9-year / 270 000 km)	R89,108					
Optional Maintenance Plan (10-year / 300 000 km)	R102,000					

**Subject to an Active Standard Volkswagen warranty or an Active Genuine Volkswagen Maintenance Plan**

<b>Volkswagen EasyDrive Vehicle Service Plans</b>	<b>55kW Trendline</b>	<b>63kW Comfortline</b>	<b>63kW Mswenko</b>	<b>77kW Comfortline Tiptronic®</b>	<b>77kW Highline</b>	<b>81kW TSI GT</b>
Service Plan (3-year / 45 000 km)	R5,164					
Service Plan (4-year / 60 000 km)	R7,891					
Service Plan (5-year / 90 000 km)	R12,162					
Service Plan (5-year / 120 000 km)	R16,214					
Service Plan (6-year / 150 000 km)	R20,485					
Service Plan (6-year / 180 000 km)	R24,544					
Service Plan (7-year / 210 000 km)	R29,828					
Service Plan (8-year / 240 000 km)	R34,967					
Service Plan (9-year / 270 000 km)	R39,238					
Service Plan (10-year / 300 000 km)	R45,396					



# Share the ride



**The Polo Vivo is here and it's equipped with a variety of features to suit you and your crew.**

From the front electric windows, ISOFIX mounting points for baby seats, Ultrasonic alarm, to its stylish exterior and sound system, the Polo Vivo has it all. With features as attractive as this, everyone will want to share the ride.





# Style comes standard

The Polo Vivo looks as smooth as it drives. With its smart design and handy features, it's no wonder it grabs attention.

Features you can expect across the Polo Vivo range:

- Front electric windows
- ISOFIX mounting points for baby seats
- Ultrasonic alarm system

For more information on standard features and optional extras on selected models, visit [www.vw.co.za](http://www.vw.co.za)



# It's what's on the inside **that counts**



Note that this is a Highline with optional features

**As the adage goes, it's what's on the inside that counts – the same is true for Polo Vivo. It raises the bar for vehicles in its category.**

**Standard features you can expect in the Polo Vivo include:**

- Electronic rev counter
- Digital clock
- Digital trip recorder
- Passenger vanity mirror
- Front door pockets
- Height- and reach-adjustable steering column
- Manual anti-dazzle rear-view mirror
- Power steering
- Airconditioning

For more information on optional extras on selected models, visit [www.vw.co.za](http://www.vw.co.za)



Note that this is a Highline with optional features

# Innovation has never **looked this good**

**The Polo Vivo is equipped with more digital features than any other small car in its category.**

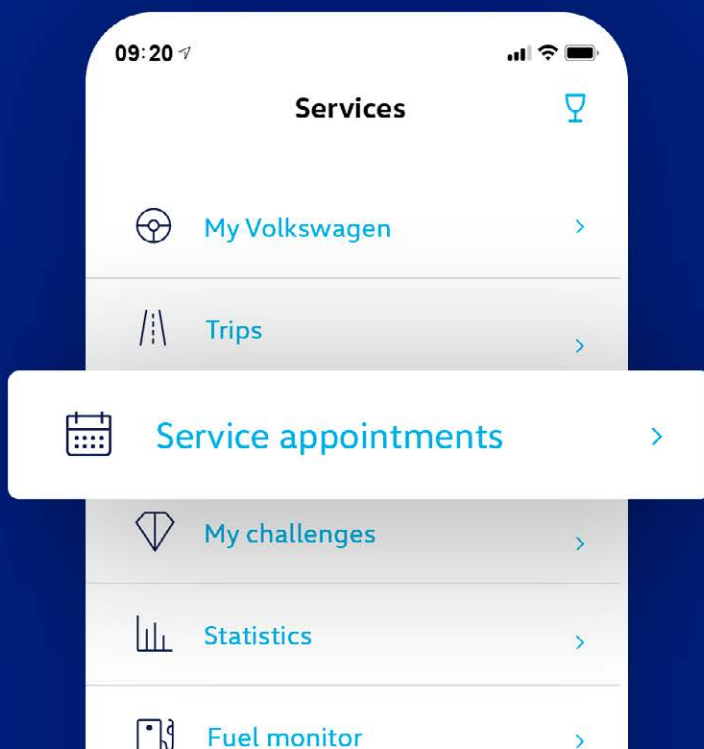
The 340G radio with SD, USB, Bluetooth, App-Connect with B-sting/2 speakers and 2 tweeters are optional on the Comfortline. All these features, as well as 4 speakers and 2 tweeters, come standard on the Highline and GT.

App-Connect allows you to access certain smartphone functions such as selected apps, maps and music through the Android Auto and CarPlay applications.

For more information on standard features and optional extras on selected models, visit [www.vw.co.za](http://www.vw.co.za)



# Your personal **car companion**



  
**We Connect Go®**



**Get ready to experience the next generation of Volkswagen connectivity with the We Connect Go App and DataPlug, an optional feature in the Polo Vivo.**

We Connect Go takes the Volkswagen digital user experience to a new level by connecting you with your Volkswagen using a Bluetooth-connected DataPlug, which comes standard. With it, you have all the important vehicle information you need, at your fingertips. You will be able to:

- Record vehicle journeys and fuelling costs
- Find your car without searching
- Quickly call for help in cases of emergency
- Analyse and help optimise your driving style



# Feel safe and sound in the Polo Vivo

When you get behind the wheel of a Polo Vivo, you can trust that you and your passengers are well protected. From airbags to ISOFIX mounting points for baby seats, young and old will be safeguarded. Knowing that your car comes with these features, is just one more reason to own a Polo Vivo.

Features you can expect in the Polo Vivo:

- Driver & passenger airbags
- ISOFIX baby seat mounting points
- Childproof locks on rear doors
- High-level brake light
- Front fog lights (Optional on Trendline)
- Electronic Stability Control (Optional on the Trendline, manual Comfortline and Mswenko)
- Tyre Pressure Monitor (Optional on the Trendline, manual Comfortline and Mswenko)





# More power **to you**

**If you're looking for punch and potency in a car, we have something for you.**

The Trendline comes with a power output of 55kW and the Comfortline (manual) with 63kW, Comfortline Tiptronic® and Highline all come with 77kW and GT comes with 81kW. While all five trim lines share a bunch of attractive features, they also come with their own optional and standard key features. At the end of the day, how you like your Polo Vivo is entirely up to you.

# Raising the bar on tar



**When you get behind the wheel of the Polo Vivo GT, you'll agree that it's in a class of its own and as stylish as it is sporty.**

It comes with attractive exterior features such as 17" 'Mirabeau' wheels and a single pipe exhaust with chrome trim. Interior attributes include a 1.0 TSI 81kW engine, front Sport seats, aluminium-look pedals and 'Anthracite' headlining.

More features you can expect in the GT:

- Cruise Control
- Lowered suspension (-15mm)
- GT logo on sides of vehicle and grille
- 'Anthracite' sunvisors
- 'Space' seat trim
- Tailgate spoiler in black



# It's better **in leather**

The Polo Vivo just got smoother than smooth with the option of a leather-trimmed interior. When you're looking to impress, you'll do just that when you rock up in your extra-sleek new ride.



# The streets have a new look

**The limited edition Polo Vivo Mswenko is about to give the vibrant streets of Mzansi a whole new look.**

“Mswenko” is the bold style, effortless swag and unique attitude that makes you, you. This stylish 1.4 Comfortline ride comes in four bold colour offerings including Reef Blue Metallic, Pure White, Reflex Silver Metallic and Limestone Grey Metallic, giving it that Mswenko look that matches your drive.

While the bold colours brighten up the city, what makes the Polo Vivo Mswenko truly stand out, is its Mswenko side decals and Ocean Blue seat trim.

To take this striking style to new levels, the Polo Vivo Mswenko also comes standard with 16” Portago alloys in anthracite, a black painted roof, chrome tip exhaust and silver inserts.

While you’re at it, why not elevate your drive further by choosing from a range of additional features such as a Safety Package, Parking Package, Cruise Control and LED Headlights.

Don’t just dress Mswenko, drive Mswenko.



**MSWENKO**

# Colours

The illustrations on this page can only be regarded as a general guide as the printing process cannot render the true depth and brilliance of the paint finishes with absolute accuracy. Please note that certain paint and trim combinations may not be available.

## Polo Vivo



**Flash Red**



**Reef Blue**  
Metallic



**Pure White**



**Limestone Grey**  
Metallic



**Reflex Silver**  
Metallic



# Wheels & Rims



**14" steel wheels**  
(Standard on Trendline / Comfortline)



**Estrada**  
15" alloy wheels  
(Optional on Trendline / Comfortline)



**Rivazza**  
16" alloy wheels  
(Standard on Highline)

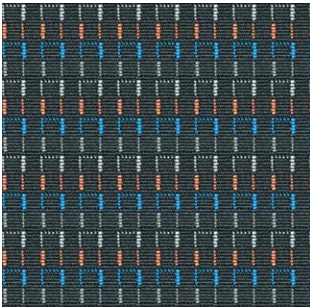


**Mirabeau**  
17" alloy wheels  
(Standard on GT)

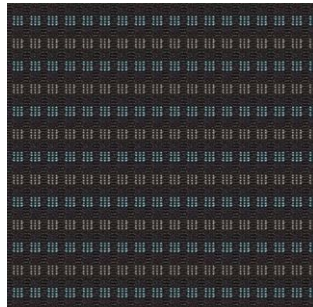


**Portago**  
16" alloy wheels  
(Standard on Mswenko)

# Trims



**Tradition**  
Cloth seat trim  
(Standard on Trendline)



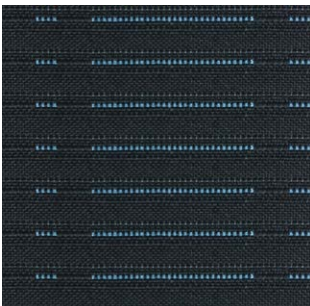
**City**  
Cloth seat trim  
(Standard on Comfortline)



**Cable**  
Cloth seat trim  
(Standard on Highline)



**Ocean Blue**  
Cloth seat trim  
(Standard on Mswenko)



**Space**  
Cloth seat trim  
(Standard on GT)



**Vienna**  
Leather\* seat trim  
(Optional on Comfortline,  
Highline and GT)

\*A combination of leather and high-quality durable materials.



This information was effective as at 15 February 2021  
valid for model year 21 and is subject to change without notice.

Visit us at [vw.co.za](http://vw.co.za)  
©Volkswagen South Africa