



Polo Vivo



Polo Vivo Hatch Specification

X = standard O = optional - = not available

Polo Vivo Hatch Specification	55kW Trendline	63kW Comfortline	77kW Comfortline Tiptronic®	77kW Highline	77kW Maxx	81kW TSI GT
Engine						
Cylinders	4	4	4	4	4	3
Capacity (cm³)	1398	1398	1598	1598	1598	999
Bore/Stroke (mm)	76,5 / 75,6	76,5 / 75,6	76,5 / 86,9	76,5 / 86,9	76,5 / 86,9	74.5 / 76.4
Valves (per cylinder)	4	4	4	4	4	4
Compression Ratio	10.5 : 1	10.5 : 1	10.5 : 1	10.5 : 1	10.5 : 1	-
Fuel Injection	X	X	X	X	X	X
CO ₂ Emissions (g/km)	132	140	144	147	154	109
Transmission						
5-speed manual	X	X	-	X	X	-
6-speed manual	-	-	-	-	-	X
6-speed manual Tiptronic®	-	-	X	-	-	-
Performance						
Power output (kW @ r/min)	55 @ 4800	63 @ 5000	77 @ 5250	77 @ 5250	77 @ 5250	81 @ 5000
Torque (Nm @ r/min)	130 @ 3,750	132 @ 3,750	153 @ 3800	153 @ 3800	153 @ 3800	200 @ 2000
Fuel consumption (litres / 100 km)*						
Extra-urban	4,5	4,8	4,9	4,8	5,2	4
Urban cycle	7,6	7,9	8,2	8,5	8,7	5,5
Combined	5,7	5,9	6,1	6,2	6,5	4,6
Performance:						
Top speed (km/h)	171	177	188	188	188	196
Running Gear						
Front axle:						
Lowered suspension	-	-	-	-	-	X
Raised suspension (15mm)	-	-	X	-	X	-
Suspension struts, wishbone	X	X	X	X	X	X
Rear axle:						
Suspension struts, toe correcting, torsion beam, trailing arm axle	X	X	X	X	X	X
Brakes						
Brake fluid warning indicator	X	X	X	X	X	X
Brake pressure regulator	X	X	X	X	X	X
Front discs	X	X	X	X	X	X
Rear drum brakes	X	X	X	X	X	X
ABS with EBD	X	X	X	X	X	X
Wheelrims / tyres						
Full wheel trim covers	X	X	X	-	-	-
Steel spare wheel for temporary use	-	-	-	X	X	X
Full-size steel spare wheel	X	X	X	-	-	-
Wheel cover 5J X 14 steel 175/70 R 14	X	X	X	-	-	-
"Estrada" 6J X 15 alloy 185/60 R 15	O	O	O	-	-	-
"Rivazza" 7J X 16 alloy 215/45 R 16	-	-	-	X	-	-
"Canyon" 7.5J X 17 alloy 215/40 R17	-	-	-	-	X	-
"Mirabeau" 7J X 17 alloy 215/40 R17	-	-	-	-	-	X
Dimensions / Capacities						
Fuel tank 45l	X	X	X	X	X	X
Luggage compartment 280l	X	X	X	X	X	X
(seats folded 952l)	X	X	X	X	X	X
DIN Kerb Weight (kg) (Kerb weight may vary depending on options fitted to vehicle)	1063	1066	1102	1081	1117	1092
Gross Vehicle Mass (kg)	1530	1540	1570	1540	1570	1530

Polo Vivo Hatch Specification

X = standard O = optional - = not available

Polo Vivo Hatch Specification	55kW Trendline	63kW Comfortline	77kW Comfortline Tiptronic®	77kW Highline	77kW Maxx	81kW TSI GT
Dimensions / Capacities (continued)						
Length (mm)	3972	3972	3972	3972	3972	3972
Width (mm)	1682	1682	1682	1682	1682	1682
Height (mm)	1462	1462	1462	1462	1477	1447
Track - front (mm)	1463	1463	1463	1463	1463	1463
Track - rear (mm)	1456	1456	1456	1456	1456	1456
Turning circle (m)	10,6	10,6	10,6	10,6	10,6	10,6
Wheel base (mm)	2470	2470	2470	2470	2470	2470
Ground Clearance (mm)	143	143	143	143	158	128
Towing Capacity Braked (kg)	-	1000	1000	1000	1000	1000
Towing Capacity Unbraked (kg)	-	570	580	570	570	580
Audio & Communication						
Radio 140G SD/USB/Bluetooth with B-sting/2 Speakers and 2 Tweeters	X	X	X	-	-	-
Radio 340G SD/USB/Bluetooth/App-Connect with B-sting/2 Speakers and 2 Tweeters	-	O	O	-	-	-
Radio 340G SD/USB/Bluetooth/App-Connect with B-sting/4 Speakers and 2 Tweeters	-	-	-	X	X	X
Sound Edition Package with 16" alloy wheel	-	O	-	-	-	-
Safety						
Driver and passenger airbags	X	X	X	X	X	X
ISOFIX child seat mounting points in rear	X	X	X	X	X	X
Childproof locks on rear doors	X	X	X	X	X	X
High level brake light	X	X	X	X	X	X
Front fog lights	O	X	X	X	X	X
Rear Park Distance Control	-	O	O	O	O	O
Parking package (rear-view camera with rear PDC)	-	O	O	O	O	O
Electronic Stability Control	O	O	X	X	X	X
Tyre Pressure Monitor	O	O	X	X	X	X
Lights and Vision Package (Rain Sensor + Dusk Sensor)	-	O	O	O	O	O
LED Headlights Package (incl. Lights and Vision Package) forces PXX on Comfortline Manual	-	O	O	O	O	O
Security						
Immobiliser	X	X	X	X	X	X
Alarm with Remote Central locking	X	X	X	X	X	X
Ultrasonic alarm sensors	X	X	X	X	X	X
Mirrors						
Aspherical driver's side	X	X	X	X	X	X
Black exterior mirrors	X	-	-	-	-	-
Body-coloured exterior mirrors	-	X	X	X	-	X
Dulled aluminium exterior mirrors	-	-	-	-	X	-
Manual and remotely adjustable mirrors from inside	X	X	X	X	X	X
Windows						
Tinted glass all round	X	X	X	X	X	X
Heated rear window	X	X	X	X	X	X
Front electric windows	X	X	X	X	X	X
Wiper System						
Intermittent wiper	X	X	X	X	X	X
Rear wiper	X	X	X	X	X	X
Interior Features						
Heating and fresh air ventilation system	X	X	X	X	X	X
Cup holders, 2 integrated into centre console	X	X	X	X	X	X

Polo Vivo Hatch Specification

X = standard O = optional - = not available

Polo Vivo Hatch Specification	55kW Trendline	63kW Comfortline	77kW Comfortline Tiptronic®	77kW Highline	77kW Maxx	81kW TSI GT
Interior Features (continued)						
Digital clock	X	X	X	X	X	X
Digital trip recorder	X	X	X	X	X	X
Front passenger vanity mirror	X	X	X	X	X	X
Electronic rev counter	X	X	X	X	X	X
Front door pockets	X	X	X	X	X	X
Height-adjustable steering column	X	X	X	X	X	X
Reach-adjustable steering column	X	X	X	X	X	X
3-spoke steering wheel	X	X	X	-	-	-
Multi-function Steering Wheel	-	X	X	-	-	-
3-spoke mufu leather steering wheel with aluminium inserts	-	O	O	X	X	X
Painted upper centre console - Anthracite	X	X	X	X	-	-
Painted upper centre console - Colour	-	-	-	-	X	X
Anthracite sunvisors	-	-	-	-	-	X
Anthracite headlining/cover and A,B,C post uppers	-	-	-	-	-	X
Leatherette gearshift boot	X	X	X	X	X	X
High tone hooter	X	X	X	X	X	X
Lights on warning buzzer	X	X	X	X	X	X
Manual anti-dazzle rear-view mirror	X	X	X	X	X	X
Power steering	X	X	X	X	X	X
Manually controlled airconditioner	X	X	X	X	X	X
Multi-function Display	-	X	X	X	X	X
Cruise control	O	O	O	O	O	X
Sport pedal cluster	-	-	-	-	X	X
Loose-lay carpets mats	O	O	O	O	X	X
Smokers Package	O	O	O	O	O	O
Floor mats - front and rear	O	O	O	O	X	X
Storage Package (front centre armrest and drawer under driver seat)	-	O	O	O	O	O
Seats						
Height-adjustable front head restraints	X	X	X	X	X	X
Rear head restraints	X	X	X	X	X	X
Rear seat bench backrest - fixed folding	X	X	X	X	X	X
Height-adjustable driver seat	-	X	X	X	X	X
"Tradition" cloth seat trim	X	-	-	-	-	-
"City" cloth seat trim	-	X	X	-	-	-
"Cable" cloth seat trim	-	-	-	X	-	-
"Blade" cloth seat trim	-	-	-	-	X	-
"Space" cloth seat trim	-	-	-	-	-	X
Front Sports Seats	-	-	-	-	X	X
"Vienna" leather trim seat package (package includes leather-covered seat material multi-function steering wheel, gearshift knob and front sport seats)	-	O	O	O	O	O

Polo Vivo Hatch Specification

X = standard O = optional - = not available

Polo Vivo Hatch Specification	55kW Trendline	63kW Comfortline	77kW Comfortline Tiptronic®	77kW Highline	77kW Maxx	81kW TSI GT
Exterior Features						
Body-coloured bumpers	X	X	X	X	X	X
Black door handles	X	-	-	-	-	-
Body-coloured door handles	-	X	X	X	X	X
Rear tailgate spoiler	-	-	-	-	-	X
Underbody guard	-	-	X	-	-	-
GT lettering on the tailgate, front grille and sides	-	-	-	-	-	X
Maxx lettering on the tailgate and sides	-	-	-	-	X	-
Black side moulding	-	-	-	-	-	X
Sporty single-pipe exhaust system with chrome trim	-	-	-	-	-	X
Silver anodised roof rails	-	-	-	-	X	-
Vivo Style Package (only available with Sound Edition)	-	O	-	-	-	-
Front fog lights	O	X	X	X	X	X
Guarantees						
Warranty 3-year / 120 000 km	X	X	X	X	X	X
Anti-corrosion Warranty (6-year)	X	X	X	X	X	X
15 000 km service intervals	X	X	X	X	X	X
Volkswagen EasyDrive Vehicle Maintenance Plan	O	O	O	O	O	O
Volkswagen EasyDrive Vehicle Service Plan	O	O	O	O	O	O
Disclaimer						
<p>Dimensions, capacities and abilities apply to standard vehicles. Actual consumption will vary with vehicle loading, driving style, climatic and road conditions. The above information is effective as at 1 July 2020 and is subject to change.</p>						

Prices & Options - Polo Vivo Hatch

Prices are inclusive of CO₂ tax and 15% VAT
X = standard O = optional - = not available

Recommended Retail Prices	55kW Trendline	63kW Comfortline	77kW Comfortline Tiptronic®	77kW Highline	77kW Maxx	81kW TSI GT
Retail Price	R207,500	R219,700	R253,300	R247,700	R257,000	R281,200
Metallic / Pearlescent Paint	No Cost	No Cost	No Cost	No Cost	No Cost	No Cost
Cruise Control	R2,000	R2,000	R2,000	R2,000	R2,000	X
Smokers Package	R300	R300	R300	R300	R300	R300
Floor Mats Front and Rear	R450	R450	R450	R450	X	X
Storage Package (Front Centre Armrest + Drawer under Drivers Seat)	-	R2,200	R2,200	R2,200	R2,200	R2,200
Safety Package (ESC + Tyre Pressure Monitor)	R2,650	R2,650	X	X	X	X
Radio 340G SD/USB/MP3/Bluetooth/App-Connect with B-sting/2 Speakers & 2 Tweeters	-	R3,050	R3,050	-	-	-
"Vienna" leather trim package (Package includes leather-covered seat material, multi-function steering wheel, gearshift lever, gearknob and front sport seats)	-	R9,900	R9,900	R9,900	R9,900	R9,900
"Estrada" 15" alloy wheels	R4,850	R4,850	R4,850	-	-	-
Front fog lights	R1,500	X	X	X	X	X
Vivo Style Package (only available with Sound Edition)	-	R2,500	-	-	-	-
Sound Edition Package with 16" alloy wheel	-	R16,000	-	-	-	-
Rear Park Distance Control	-	R2,550	R2,550	R2,550	R2,550	R2,550
Parking Package (rear-view camera with rear PDC)	-	R5,450	R5,450	R5,450	R5,450	R5,450
Lights and Vision Package (Rain Sensor + Dusk Sensor)	-	R4,000	R4,000	R4,000	R4,000	R4,000
LED Headlights Package (incl Lights and Vision Package) forces PXX on Comfortline Manual	-	R14,850	R14,850	R14,850	R14,850	R14,850

Prices & Options were effective as at 1 July 2020 and subject to change without prior notice.

Prices & Options - Polo Vivo Hatch

Prices are inclusive of CO₂ tax and 15% VAT
X = standard O = optional - = not available

Volkswagen EasyDrive Vehicle Maintenance Plans	55kW Trendline	63kW Comfortline	77kW Comfortline Tiptronic®	77kW Maxx	81kW TSI GT
Optional Maintenance Plan (3-year / 45 000 km)			R6,052		
Optional Maintenance Plan (4-year / 60 000 km)			R10,866		
Optional Maintenance Plan (5-year / 90 000 km)			R18,430		
Optional Maintenance Plan (5-year / 120 000 km)			R29,021		
Optional Maintenance Plan (6-year / 150 000 km)			R40,574		
Optional Maintenance Plan (6-year / 180 000 km)			R50,752		
Optional Maintenance Plan (7-year / 210 000 km)			R62,031		
Optional Maintenance Plan (8-year / 240 000 km)			R74,959		
Optional Maintenance Plan (9-year / 270 000 km)			R86,513		
Optional Maintenance Plan (10-year / 300 000 km)			R99,029		

Subject to an Active Standard Volkswagen warranty or an Active Genuine Volkswagen Maintenance Plan

Volkswagen EasyDrive Vehicle Service Plans	55kW Trendline	63kW Comfortline	77kW Comfortline Tiptronic®	77kW Maxx	81kW TSI GT
Service Plan (3-year / 45 000 km)			R5,014		
Service Plan (4-year / 60 000 km)			R7,661		
Service Plan (5-year / 90 000 km)			R11,808		
Service Plan (5-year / 120 000 km)			R15,742		
Service Plan (6-year / 150 000 km)			R19,889		
Service Plan (6-year / 180 000 km)			R23,829		
Service Plan (7-year / 210 000km)			R28,960		
Service Plan (8-year / 240 000km)			R33,948		
Service Plan (9-year / 270 000km)			R38,095		
Service Plan (10-year / 300 000km)			R44,074		

Share the ride



The Polo Vivo is here and it's equipped with a variety of features to suit you and your crew.

From the front electric windows, ISOFIX mounting points for baby seats, Ultrasonic alarm, to its stylish exterior and sound system, the Polo Vivo has it all. With features as attractive as this, everyone will want to share the ride.



Style comes standard

The Polo Vivo looks
as smooth as it drives.
With its smart design
and handy features, it's no
wonder it grabs attention.

Features you can expect across the Polo Vivo range:

- Front electric windows
- ISOFIX mounting points for baby seats
- Ultrasonic alarm system

For more information on standard features and optional extras on selected models, visit www.vw.co.za



It's what's on the inside **that counts**



Note that this is a Highline with optional features

As the adage goes, it's what's on the inside that counts – the same is true for Polo Vivo. It raises the bar for vehicles in its category.

Standard features you can expect in the Polo Vivo include:

- Electronic rev counter
- Digital clock
- Digital trip recorder
- Passenger vanity mirror
- Front door pockets
- Height- and reach-adjustable steering column
- Manual anti-dazzle rear-view mirror
- Power steering
- Airconditioning

For more information on optional extras on selected models, visit www.vw.co.za



Note that this is a Highline with optional features

Innovation has never **looked this good**

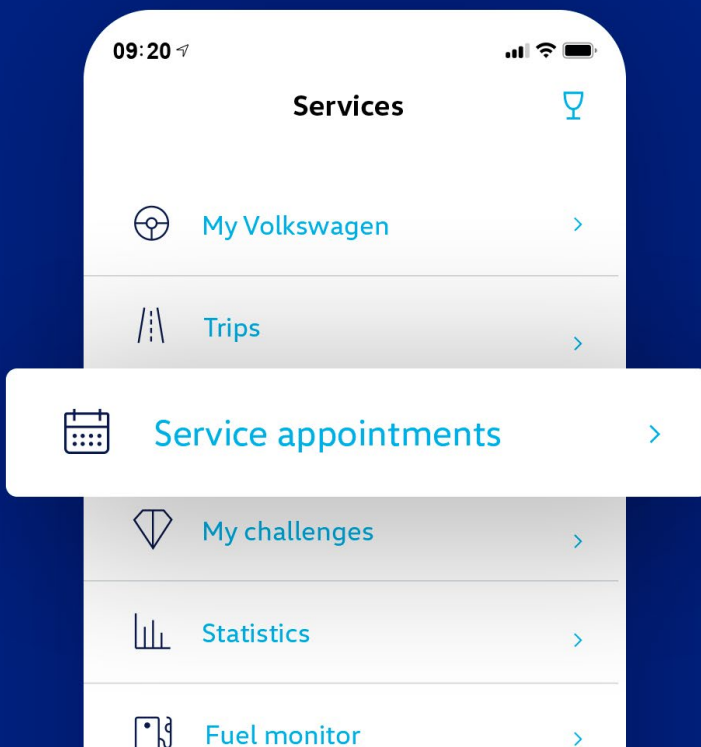
The Polo Vivo is equipped with more digital features than any other small car in its category.

The 340G radio with SD, USB, Bluetooth, App-Connect with B-sting/2 speakers and 2 tweeters are optional on the Comfortline. All these features, as well as 4 speakers and 2 tweeters, come standard on the Highline, GT and Maxx.

App-Connect allows you to access certain smartphone functions such as selected apps, maps and music through the Android Auto and CarPlay applications.

For more information on standard features and optional extras on selected models, visit www.vw.co.za

Your personal car companion




We Connect Go[®]



Get ready to experience the next generation of Volkswagen connectivity with the We Connect Go App and DataPlug, an optional feature in the Polo Vivo.

We Connect Go takes the Volkswagen digital user experience to a new level by connecting you with your Volkswagen using a Bluetooth-connected DataPlug, which comes standard. With it, you have all the important vehicle information you need, at your fingertips. You will be able to:

- Record vehicle journeys and fuelling costs
- Find your car without searching
- Quickly call for help in cases of emergency
- Analyse and help optimise your driving style



Feel safe and sound in the Polo Vivo

When you get behind the wheel of a Polo Vivo, you can trust that you and your passengers are well protected. From airbags to ISOFIX mounting points for baby seats, young and old will be safeguarded. Knowing that your car comes with these features, is just one more reason to own a Polo Vivo.

Features you can expect in the Polo Vivo:

- Driver & passenger airbags
- ISOFIX baby seat mounting points
- Childproof locks on rear doors
- High-level brake light
- Front fog lights (Optional on Trendline)
- Electronic Stability Control (Optional on the Trendline and manual Comfortline)
- Tyre Pressure Monitor (Optional on the Trendline and manual Comfortline)



More power **to you**

If you're looking for punch and potency in a car, we have something for you.

The Trendline comes with a power output of 55kW and the Comfortline (manual) with 63kW, Comfortline Tiptronic®, Highline and Maxx all come with 77kW and GT comes with 81kW. While all five trim lines share a bunch of attractive features, they also come with their own optional and standard key features. At the end of the day, how you like your Polo Vivo is entirely up to you.

Raising the bar on tar



When you get behind the wheel of the Polo Vivo GT, you'll agree that it's in a class of its own and as stylish as it is sporty.

It comes with attractive exterior features such as 17" 'Mirabeau' wheels and a single pipe exhaust with chrome trim. Interior attributes include a 1.0 TSI 81kW engine, front Sport seats, aluminium-look pedals and 'Anthracite' headlining.

More features you can expect in the GT:

- Cruise Control
- Lowered suspension (-15mm)
- GT logo on sides of vehicle and grille
- 'Anthracite' sunvisors
- 'Space' seat trim
- Tailgate spoiler in black



It's better **in leather**

The Polo Vivo just got smoother than smooth with the option of a leather-trimmed interior. When you're looking to impress, you'll do just that when you rock up in your extra-sleek new ride.

The new sound of the city

Hear that? That's the sound of the exclusive Polo Vivo Sound Edition coming your way.

Powered by App-Connect, Radio R340G and a subwoofer set with a Vivo 6 Speaker sound system, this premium package provides the perfect sound as you surge through the city.

They say style stems from within, so amplify your drive by choosing the Black Interior Styling package. This includes an Anthracite Headliner, Privacy Glass, sun visors and trim. You also have the option of selecting a Steering Wheel, Gear and Handbrake Lever in leather to crank up your Vivo to new levels.

This sonic spectacle also includes 16" Rivazza Alloy wheels in Anthracite, energetic orange mirror caps and graphic equaliser decals on the doors and tailgate, because it doesn't just sound loud, it looks loud.



Colours

The illustrations on this page can only be regarded as a general guide as the printing process cannot render the true depth and brilliance of the paint finishes with absolute accuracy. Please note that certain paint and trim combinations may not be available.

Polo Vivo



Flash Red



Reef Blue
Metallic



Pure White



Limestone Grey
Metallic



Reflex Silver
Metallic

Polo Vivo Maxx



Pure White



Flash Red



Energetic Orange



Reflex Silver
Metallic

Wheels & Rims



14" steel wheels
(Standard on Trendline / Comfortline)



Estrada
15" alloy wheels
(Optional on Trendline / Comfortline)



Rivazza
16" alloy wheels
(Standard on Highline)

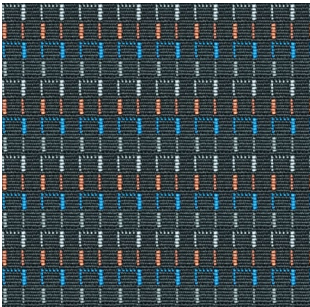


Mirabeau
17" alloy wheels
(Standard on GT)

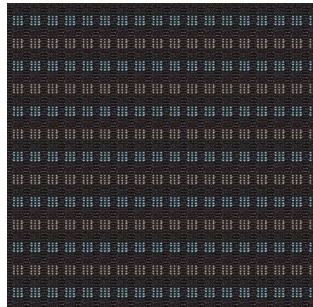


Canyon
17" alloy wheels
(Standard on Maxx)

Trims



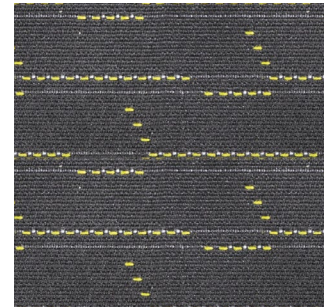
Tradition
Cloth seat trim
(Standard on Trendline)



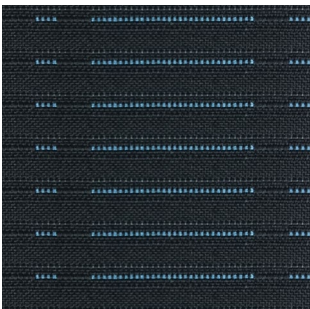
City
Cloth seat trim
(Standard on Comfortline)



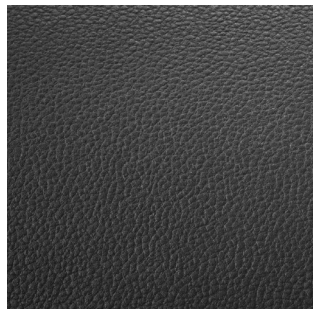
Cable
Cloth seat trim
(Standard on Highline)



Maxx
Seat trim
(Standard on Maxx)



Space
Cloth seat trim
(Standard on GT)



Vienna
Leather* seat trim
(Optional on Comfortline,
Highline, Maxx and GT)

*A combination of leather and high-quality durable materials.



Buying a Volkswagen is only the beginning of our journey together

At Volkswagen, it's our mission to keep you and your family moving forward on life's journey. That's why we have a range of products and services designed to keep your Volkswagen in optimum condition and give you peace of mind.



EasyDrive Vehicle Plans

You do life,
we'll take care of the ride

Volkswagen's EasyDrive Vehicle Plans offer affordable and easy to understand cover on Service and Maintenance Plans. Our plans offer specialist care from qualified Volkswagen experts, ensuring your vehicle maintains its re-sale value. This way you can get back to enjoying the journey.

Get-Go

Service you know straight
from the Get-Go

The Get-Go service is available to all Volkswagen drivers with a vehicle that's four years or older, and without a Service or Maintenance Plan. You can get an affordable annual service for your Volkswagen by knowing the rate from the get-go. Get-Go Service includes parts and labour and will help you to maintain your service history.



This information was effective as at 1 July 2020
valid for model year 20 and is subject to change without notice.

Visit us at vw.co.za
©Volkswagen South Africa