



Polo Vivo



Polo Vivo Hatch Specification

X = standard O = optional - = not available

| Polo Vivo Hatch Specification | 55kW Trendline | 63kW Comfortline | 77kW Comfortline Tiptronic® | 77kW Highline | 77kW Maxx | 81kW TSI GT |
|--|----------------|------------------|-----------------------------|---------------|-------------|-------------|
| Engine | | | | | | |
| Cylinders | 4 | 4 | 4 | 4 | 4 | 3 |
| Capacity (cm ³) | 1398 | 1398 | 1598 | 1598 | 1598 | 999 |
| Bore/Stroke (mm) | 76,5 / 75,6 | 76,5 / 75,6 | 76,5 / 86,9 | 76,5 / 86,9 | 76,5 / 86,9 | 74.5 / 76.4 |
| Valves (per cylinder) | 4 | 4 | 4 | 4 | 4 | 4 |
| Compression Ratio | 10.5 : 1 | 10.5 : 1 | 10.5 : 1 | 10.5 : 1 | 10.5 : 1 | - |
| Fuel Injection | X | X | X | X | X | X |
| CO ₂ Emissions (g/km) | 132 | 140 | 144 | 147 | 154 | 109 |
| Transmission | | | | | | |
| 5-speed manual | X | X | - | X | X | - |
| 6-speed manual | - | - | - | - | - | X |
| 6-speed manual Tiptronic® | - | - | X | - | - | - |
| Performance | | | | | | |
| Power output (kW @ r/min) | 55 @ 4800 | 63 @ 5000 | 77 @ 5250 | 77 @ 5250 | 77 @ 5250 | 81 @ 5000 |
| Torque (Nm @ r/min) | 130 @ 3,750 | 132 @ 3,750 | 153 @ 3800 | 153 @ 3800 | 153 @ 3800 | 200 @ 2000 |
| Fuel consumption (litres / 100 km)* | | | | | | |
| Extra-urban | 4,5 | 4,8 | 4,9 | 4,8 | 5,2 | 4 |
| Urban cycle | 7,6 | 7,9 | 8,2 | 8,5 | 8,7 | 5,5 |
| Combined | 5,7 | 5,9 | 6,1 | 6,2 | 6,5 | 4,6 |
| Performance: | | | | | | |
| Top speed (km/h) | 171 | 177 | 188 | 188 | 188 | 196 |
| Running Gear | | | | | | |
| Front axle: | | | | | | |
| Lowered suspension | - | - | - | - | - | X |
| Raised suspension (15mm) | - | - | X | - | X | - |
| Suspension struts, wishbone | X | X | X | X | X | X |
| Rear axle: | | | | | | |
| Suspension struts, toe correcting, torsion beam, trailing arm axle | X | X | X | X | X | X |
| Brakes | | | | | | |
| Brake fluid warning indicator | X | X | X | X | X | X |
| Brake pressure regulator | X | X | X | X | X | X |
| Front discs | X | X | X | X | X | X |
| Rear drum brakes | X | X | X | X | X | X |
| ABS with EBD | X | X | X | X | X | X |
| Wheelrims / tyres | | | | | | |
| Full wheel trim covers | X | X | X | - | - | - |
| Steel spare wheel for temporary use | - | - | - | X | X | X |
| Full-size steel spare wheel | X | X | X | - | - | - |
| Wheel cover 5J X 14 steel 175/70 R 14 | X | X | X | - | - | - |
| "Estrada" 6J X 15 alloy 185/60 R 15 | O | O | O | - | - | - |
| "Rivazza" 7J X 16 alloy 215/45 R 16 | - | - | - | X | - | - |
| "Canyon" 7.5J X 17 alloy 215/40 R17 | - | - | - | - | X | - |
| "Mirabeau" 7J X 17 alloy 215/40 R17 | - | - | - | - | - | X |
| Dimensions / Capacities | | | | | | |
| Fuel tank 45l | X | X | X | X | X | X |
| Luggage compartment 280l | X | X | X | X | X | X |
| (seats folded 952l) | X | X | X | X | X | X |
| DIN Kerb Weight (kg) (Kerb weight may vary depending on options fitted to vehicle) | 1063 | 1066 | 1102 | 1081 | 1117 | 1092 |
| Gross Vehicle Mass (kg) | 1530 | 1540 | 1570 | 1540 | 1570 | 1530 |

Polo Vivo Hatch Specification

X = standard O = optional - = not available

| Polo Vivo Hatch Specification | 55kW Trendline | 63kW Comfortline | 77kW Comfortline Tiptronic® | 77kW Highline | 77kW Maxx | 81kW TSI GT |
|---|----------------|------------------|-----------------------------|---------------|-----------|-------------|
| Dimensions / Capacities (continued) | | | | | | |
| Length (mm) | 3972 | 3972 | 3972 | 3972 | 3972 | 3972 |
| Width (mm) | 1682 | 1682 | 1682 | 1682 | 1682 | 1682 |
| Height (mm) | 1462 | 1462 | 1462 | 1462 | 1477 | 1447 |
| Track - front (mm) | 1463 | 1463 | 1463 | 1463 | 1463 | 1463 |
| Track - rear (mm) | 1456 | 1456 | 1456 | 1456 | 1456 | 1456 |
| Turning circle (m) | 10,6 | 10,6 | 10,6 | 10,6 | 10,6 | 10,6 |
| Wheel base (mm) | 2470 | 2470 | 2470 | 2470 | 2470 | 2470 |
| Ground Clearance (mm) | 143 | 143 | 143 | 143 | 158 | 128 |
| Towing Capacity Braked (kg) | - | 1000 | 1000 | 1000 | 1000 | 1000 |
| Towing Capacity Unbraked (kg) | - | 570 | 580 | 570 | 570 | 580 |
| Audio & Communication | | | | | | |
| Radio 140G SD/USB/Bluetooth with B-sting/2 Speakers and 2 Tweeters | X | X | X | - | - | - |
| Radio 340G SD/USB/Bluetooth/App-Connect with B-sting/2 Speakers and 2 Tweeters | - | O | O | - | - | - |
| Radio 340G SD/USB/Bluetooth/App-Connect with B-sting/4 Speakers and 2 Tweeters | - | - | - | X | X | X |
| Sound Edition Package with 16" alloy wheel | - | O | - | - | - | - |
| Safety | | | | | | |
| Driver and passenger airbags | X | X | X | X | X | X |
| ISOFIX child seat mounting points in rear | X | X | X | X | X | X |
| Childproof locks on rear doors | X | X | X | X | X | X |
| High level brake light | X | X | X | X | X | X |
| Front fog lights | O | X | X | X | X | X |
| Rear Park Distance Control | - | O | O | O | O | O |
| Parking package (rear-view camera with rear PDC) | - | O | O | O | O | O |
| Electronic Stability Control | O | O | X | X | X | X |
| Tyre Pressure Monitor | O | O | X | X | X | X |
| Lights and Vision Package (Rain Sensor + Dusk Sensor) | - | O | O | O | O | O |
| LED Headlights Package (incl. Lights and Vision Package) forces PXX on Comfortline Manual | - | O | O | O | O | O |
| Security | | | | | | |
| Immobiliser | X | X | X | X | X | X |
| Alarm with Remote Central locking | X | X | X | X | X | X |
| Ultrasonic alarm sensors | X | X | X | X | X | X |
| Mirrors | | | | | | |
| Aspherical driver's side | X | X | X | X | X | X |
| Black exterior mirrors | X | - | - | - | - | - |
| Body-coloured exterior mirrors | - | X | X | X | - | X |
| Dulled aluminium exterior mirrors | - | - | - | - | X | - |
| Manual and remotely adjustable mirrors from inside | X | X | X | X | X | X |
| Windows | | | | | | |
| Tinted glass all round | X | X | X | X | X | X |
| Heated rear window | X | X | X | X | X | X |
| Front electric windows | X | X | X | X | X | X |
| Wiper System | | | | | | |
| Intermittent wiper | X | X | X | X | X | X |
| Rear wiper | X | X | X | X | X | X |
| Interior Features | | | | | | |
| Heating and fresh air ventilation system | X | X | X | X | X | X |
| Cup holders, 2 integrated into centre console | X | X | X | X | X | X |

Polo Vivo Hatch Specification

X = standard O = optional - = not available

| Polo Vivo Hatch Specification | 55kW Trendline | 63kW Comfortline | 77kW Comfortline Tiptronic® | 77kW Highline | 77kW Maxx | 81kW TSI GT |
|---|----------------|------------------|-----------------------------|---------------|-----------|-------------|
| Interior Features (continued) | | | | | | |
| Digital clock | X | X | X | X | X | X |
| Digital trip recorder | X | X | X | X | X | X |
| Front passenger vanity mirror | X | X | X | X | X | X |
| Electronic rev counter | X | X | X | X | X | X |
| Front door pockets | X | X | X | X | X | X |
| Height-adjustable steering column | X | X | X | X | X | X |
| Reach-adjustable steering column | X | X | X | X | X | X |
| 3-spoke steering wheel | X | X | X | - | - | - |
| Multi-function Steering Wheel | - | X | X | - | - | - |
| 3-spoke mufu leather steering wheel with aluminium inserts | O | O | O | X | X | X |
| Painted upper centre console - Anthracite | X | X | X | X | - | - |
| Painted upper centre console - Colour | - | - | - | - | X | X |
| Anthracite sunvisors | - | - | - | - | - | X |
| Anthracite headlining/cover and A,B,C post uppers | - | - | - | - | - | X |
| Leatherette gearshift boot | X | X | X | X | X | X |
| High tone hooter | X | X | X | X | X | X |
| Lights on warning buzzer | X | X | X | X | X | X |
| Manual anti-dazzle rear-view mirror | X | X | X | X | X | X |
| Power steering | X | X | X | X | X | X |
| Manually controlled airconditioner | X | X | X | X | X | X |
| Multi-function Display | - | X | X | X | X | X |
| Cruise control | O | O | O | O | O | X |
| Sport pedal cluster | - | - | - | - | X | X |
| Loose-lay carpets mats | O | O | O | O | X | X |
| Smokers Package | O | O | O | O | O | O |
| Floor mats - front and rear | O | O | O | O | X | X |
| Storage Package (front centre armrest and drawer under driver seat) | - | O | O | O | O | O |
| Seats | | | | | | |
| Height-adjustable front head restraints | X | X | X | X | X | X |
| Rear head restraints | X | X | X | X | X | X |
| Rear seat bench backrest - fixed folding | X | X | X | X | X | X |
| Height-adjustable driver seat | - | X | X | X | X | X |
| "Tradition" cloth seat trim | X | - | - | - | - | - |
| "City" cloth seat trim | - | X | X | - | - | - |
| "Cable" cloth seat trim | - | - | - | X | - | - |
| "Blade" cloth seat trim | - | - | - | - | X | - |
| "Space" cloth seat trim | - | - | - | - | - | X |
| Front Sports Seats | - | - | - | - | X | X |
| "Vienna" leather trim seat package (package includes leather-covered seat material multi-function steering wheel, gearshift knob and front sport seats) | - | O | O | O | O | O |

Polo Vivo Hatch Specification

X = standard O = optional - = not available

| Polo Vivo Hatch Specification | 55kW Trendline | 63kW Comfortline | 77kW Comfortline Tiptronic® | 77kW Highline | 77kW Maxx | 81kW TSI GT |
|---|----------------|------------------|-----------------------------|---------------|-----------|-------------|
| Exterior Features | | | | | | |
| Body-coloured bumpers | X | X | X | X | X | X |
| Black door handles | X | - | - | - | - | - |
| Body-coloured door handles | - | X | X | X | X | X |
| Rear tailgate spoiler | - | - | - | - | - | X |
| Underbody guard | - | - | X | - | - | - |
| GT lettering on the tailgate, front grille and sides | - | - | - | - | - | X |
| Maxx lettering on the tailgate and sides | - | - | - | - | X | - |
| Black side moulding | - | - | - | - | - | X |
| Sporty single-pipe exhaust system with chrome trim | - | - | - | - | - | X |
| Silver anodised roof rails | - | - | - | - | X | - |
| Vivo Style Package (only available with Sound Edition) | - | O | - | - | - | - |
| Front fog lights | O | X | X | X | X | X |
| Guarantees | | | | | | |
| Warranty 3-year / 120 000 km | X | X | X | X | X | X |
| Anti-corrosion Warranty (6-year) | X | X | X | X | X | X |
| 15 000 km service intervals | X | X | X | X | X | X |
| Volkswagen EasyDrive Vehicle Maintenance Plan | O | O | O | O | O | O |
| Volkswagen EasyDrive Vehicle Service Plan | O | O | O | O | O | O |
| Disclaimer | | | | | | |
| <p>Dimensions, capacities and abilities apply to standard vehicles. Actual consumption will vary with vehicle loading, driving style, climatic and road conditions. The above information is effective as at 17 April 2020 and is subject to change.</p> | | | | | | |

Prices & Options - Polo Vivo Hatch

Prices are inclusive of CO₂ tax and 15% VAT
X = standard O = optional - = not available

| Recommended Retail Prices | 55kW Trendline | 63kW Comfortline | 77kW Comfortline Tiptronic® | 77kW Highline | 77kW Maxx | 81kW TSI GT |
|--|-------------------|---------------------|-----------------------------------|------------------|--------------|----------------|
| Retail Price | R202,400 | R214,300 | R247,100 | R241,700 | R250,700 | R274,300 |
| Metallic / Pearlescent Paint | No Cost | No Cost | No Cost | No Cost | No Cost | No Cost |
| Cruise Control | R2,000 | R2,000 | R2,000 | R2,000 | R2,000 | X |
| Smokers Package | R300 | R300 | R300 | R300 | R300 | R300 |
| Floor Mats Front and Rear | R450 | R450 | R450 | R450 | X | X |
| Storage Package (Front Centre Armrest + Drawer under Drivers Seat) | - | R2,200 | R2,200 | R2,200 | R2,200 | R2,200 |
| Safety Package (ESC + Tyre Pressure Monitor) | R2,650 | R2,650 | X | X | X | X |
| Radio 340G SD/USB/MP3/Bluetooth/App-Connect with B-sting/2 Speakers & 2 Tweeters | - | R3,050 | R3,050 | - | - | - |
| "Vienna" leather trim package (Package includes leather-covered seat material, multi-function steering wheel, gearshift lever, gearknob and front sport seats) | - | R9,900 | R9,900 | R9,900 | R9,900 | R9,900 |
| "Estrada" 15" alloy wheels | R4,850 | R4,850 | R4,850 | - | - | - |
| Front fog lights | R1,500 | X | X | X | X | X |
| Vivo Style Package (only available with Sound Edition) | - | R2,500 | - | - | - | - |
| Sound Edition Package with 16" alloy wheel | - | R16,000 | - | - | - | - |
| Rear Park Distance Control | - | R2,550 | R2,550 | R2,550 | R2,550 | R2,550 |
| Parking Package (rear-view camera with rear PDC) | - | R5,450 | R5,450 | R5,450 | R5,450 | R5,450 |
| Lights and Vision Package (Rain Sensor + Dusk Sensor) | - | R4,000 | R4,000 | R4,000 | R4,000 | R4,000 |
| LED Headlights Package (incl Lights and Vision Package) forces PXX on Comfortline Manual | - | R14,850 | R14,850 | R14,850 | R14,850 | R14,850 |

Prices & Options were effective as at 17 April 2020 and subject to change without prior notice.

Prices & Options - Polo Vivo Hatch

Prices are inclusive of CO₂ tax and 15% VAT
X = standard O = optional - = not available

| Volkswagen EasyDrive Vehicle Maintenance Plans | 55kW Trendline | 63kW Comfortline | 77kW Comfortline Tiptronic® | 77kW Maxx | 81kW TSI GT |
|---|---------------------------|-----------------------------|--|----------------------|------------------------|
| Optional Maintenance Plan (3-year / 45 000 km) | | | R5,819 | | |
| Optional Maintenance Plan (4-year / 60 000 km) | | | R10,448 | | |
| Optional Maintenance Plan (5-year / 90 000 km) | | | R17,722 | | |
| Optional Maintenance Plan (5-year / 120 000 km) | | | R27,905 | | |
| Optional Maintenance Plan (6-year / 150 000 km) | | | R39,014 | | |
| Optional Maintenance Plan (6-year / 180 000 km) | | | R48,800 | | |
| Optional Maintenance Plan (7-year / 210 000 km) | | | R59,645 | | |
| Optional Maintenance Plan (8-year / 240 000 km) | | | R72,076 | | |
| Optional Maintenance Plan (9-year / 270 000 km) | | | R83,185 | | |
| Optional Maintenance Plan (10-year / 300 000 km) | | | R95,220 | | |

Subject to an Active Standard Volkswagen warranty or an Active Genuine Volkswagen Maintenance Plan

| Volkswagen EasyDrive Vehicle Service Plans | 55kW Trendline | 63kW Comfortline | 77kW Comfortline Tiptronic® | 77kW Maxx | 81kW TSI GT |
|---|---------------------------|-----------------------------|--|----------------------|------------------------|
| Service Plan (3-year / 45 000 km) | | | R4,821 | | |
| Service Plan (4-year / 60 000 km) | | | R7,366 | | |
| Service Plan (5-year / 90 000 km) | | | R11,353 | | |
| Service Plan (5-year / 120 000 km) | | | R15,136 | | |
| Service Plan (6-year / 150 000 km) | | | R19,124 | | |
| Service Plan (6-year / 180 000 km) | | | R22,913 | | |
| Service Plan (7-year / 210 000km) | | | R27,846 | | |
| Service Plan (8-year / 240 000km) | | | R32,642 | | |
| Service Plan (9-year / 270 000km) | | | R36,630 | | |
| Service Plan (10-year / 300 000km) | | | R42,378 | | |

Share **the ride**



**The Polo Vivo is here and
it's equipped with a variety
of features to suit you and
your crew.**

From the front electric windows, ISOFIX mounting points for baby seats, Ultrasonic alarm, to its stylish exterior and sound system, the Polo Vivo has it all. With features as attractive as this, everyone will want to share the ride.



Style comes standard

The Polo Vivo looks as smooth as it drives. With its smart design and handy features, it's no wonder it grabs attention.

Features you can expect across the Polo Vivo range:

- Front electric windows
- ISOFIX mounting points for baby seats
- Ultrasonic alarm system

For more information on standard features and optional extras on selected models, visit www.vw.co.za



It's what's on the inside **that counts**



Note that this is a Highline with optional features

As the adage goes, it's what's on the inside that counts – the same is true for Polo Vivo. It raises the bar for vehicles in its category.

Standard features you can expect in the Polo Vivo include:

- Electronic rev counter
- Digital clock
- Digital trip recorder
- Passenger vanity mirror
- Front door pockets
- Height- and reach-adjustable steering column
- Manual anti-dazzle rear-view mirror
- Power steering
- Airconditioning

For more information on optional extras on selected models, visit www.vw.co.za



Note that this is a Highline with optional features

Innovation has never **looked this good**

The Polo Vivo is equipped with more digital features than any other small car in its category.

The 340G radio with SD, USB, Bluetooth, App-Connect with B-sting/2 speakers and 2 tweeters are optional on the Comfortline. All these features, as well as 4 speakers and 2 tweeters, come standard on the Highline, GT and Maxx.

App-Connect allows you to access certain smartphone functions such as selected apps, maps and music through the Android Auto and CarPlay applications.

For more information on standard features and optional extras on selected models, visit www.vw.co.za



Feel safe and sound in the Polo Vivo

When you get behind the wheel of a Polo Vivo, you can trust that you and your passengers are well protected. From airbags to ISOFIX mounting points for baby seats, young and old will be safeguarded. Knowing that your car comes with these features, is just one more reason to own a Polo Vivo.

Features you can expect in the Polo Vivo:

- Driver & passenger airbags
- ISOFIX baby seat mounting points
- Childproof locks on rear doors
- High-level brake light
- Front fog lights (Optional on Trendline)
- Electronic Stability Control (Optional on the Trendline and manual Comfortline)
- Tyre Pressure Monitor (Optional on the Trendline and manual Comfortline)



More power **to you**

If you're looking for punch and potency in a car, we have something for you.

The Trendline comes with a power output of 55kW and the Comfortline (manual) with 63kW, Comfortline Tiptronic®, Highline and Maxx all come with 77kW and GT comes with 81kW. While all five trim lines share a bunch of attractive features, they also come with their own optional and standard key features. At the end of the day, how you like your Polo Vivo is entirely up to you.

Raising the bar **on tar**



When you get behind the wheel of the Polo Vivo GT, you'll agree that it's in a class of its own and as stylish as it is sporty.

It comes with attractive exterior features such as 17" 'Mirabeau' wheels and a single pipe exhaust with chrome trim. Interior attributes include a 1.0 TSI 81kW engine, front Sport seats, aluminium-look pedals and 'Anthracite' headlining.

More features you can expect in the GT:

- Cruise Control
- Lowered suspension (-15mm)
- GT logo on sides of vehicle and grille
- 'Anthracite' sunvisors
- 'Space' seat trim
- Tailgate spoiler in black



It's better **in leather**

The Polo Vivo just got smoother than smooth with the option of a leather-trimmed interior. When you're looking to impress, you'll do just that when you rock up in your extra-sleek new ride.

The new sound of the city

Hear that? That's the sound of the exclusive Polo Vivo Sound Edition coming your way.

Powered by App-Connect, Radio R340G and a subwoofer set with a Vivo 6 Speaker sound system, this premium package provides the perfect sound as you surge through the city.

They say style stems from within, so amplify your drive by choosing the Black Interior Styling package. This includes an Anthracite Headliner, Privacy Glass, sun visors and trim. You also have the option of selecting a Steering Wheel, Gear and Handbrake Lever in leather to crank up your Vivo to new levels.

This sonic spectacle also includes 16" Rivazza Alloy wheels in Anthracite, energetic orange mirror caps and graphic equaliser decals on the doors and tailgate, because it doesn't just sound loud, it looks loud.



Colours

The illustrations on this page can only be regarded as a general guide as the printing process cannot render the true depth and brilliance of the paint finishes with absolute accuracy. Please note that certain paint and trim combinations may not be available.

Polo Vivo



Flash Red



**Reef Blue
Metallic**



Pure White



**Limestone Grey
Metallic**



**Reflex Silver
Metallic**

Polo Vivo Maxx



Pure White



Flash Red



Energetic Orange



**Reflex Silver
Metallic**

Wheels & Rims



14" steel wheels
(Standard on Trendline / Comfortline)



Estrada
15" alloy wheels
(Optional on Trendline / Comfortline)



Rivazza
16" alloy wheels
(Standard on Highline)

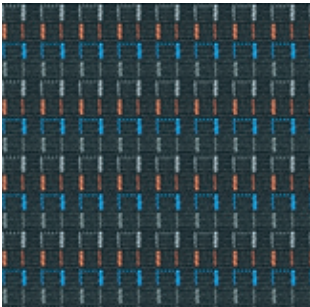


Mirabeau
17" alloy wheels
(Standard on GT)



Canyon
17" alloy wheels
(Standard on Maxx)

Trims



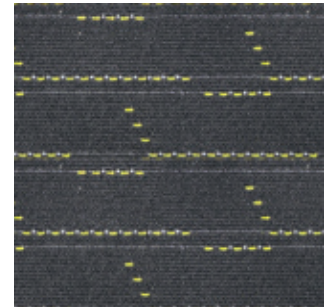
Tradition
Cloth seat trim
(Standard on Trendline)



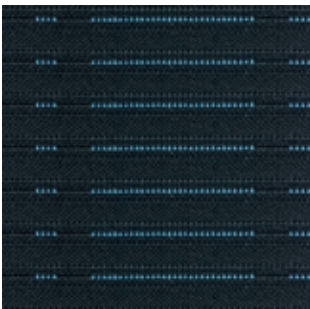
City
Cloth seat trim
(Standard on Comfortline)



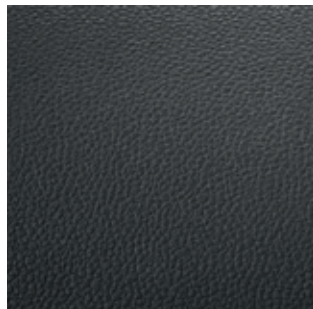
Cable
Cloth seat trim
(Standard on Highline)



Maxx
Seat trim
(Standard on Maxx)



Space
Cloth seat trim
(Standard on GT)



Vienna
Leather* seat trim
(optional across the range)

*A combination of leather and high-quality durable materials.



This information was effective as at 17 April 2020 valid for model year 20 and is subject to change without notice.

Visit us at vw.co.za
©Volkswagen South Africa