



# Amarok

Commercial  
Vehicles





Amarok 190kW

# Amarok Specifications

X = standard    O = optional    - = not available

Amarok Specification		Amarok Double Cab 2.0 BITDI® 132kW 4MOTION® Highline
Engine		
Cylinders		4
Capacity (cm³)		1968
Output (kW @ r/min)		132 @ 4000
Torque (Nm @ r/min)		400 @ 1500-2000
CO <sub>2</sub> emissions (g/km)**		211
Transmission		
6-speed manual		X
8-speed automatic		-
Performance		
Acceleration in seconds (0-100 km/h)		11,0
Fuel Consumption		
Urban cycle (litres/100 km)**		10,6
Extra-urban cycle (litres/100 km)**		7,5
Combined cycle (litres/100 km)**		8,6
Running Gear		
Independent suspension with double triangular wishbone spring and damper, front		X
Multilayer rigid axle with leaf springs, rear		X
Front and rear stabilisers		X
Rear-wheel drive		-
Shiftable 4WD with low range gears		X
Permanent 4WD		-
Brakes		
Hydraulic braking system with ventilated disc brakes, front (16")		X
Hydraulic braking system with ventilated disc brakes, front (17")		-
Brake drum in the rear		X
16-inch brake disc in the rear		-
ESC (Electronic Stabilisation Control) with brake assistant and Hill Start/Hill Descent Assist		X
ABS (Anti-lock Braking System) incl. offroad ABS		X
ASR (Anti-Slip Regulation)		X
TCS (Traction Control System)		X
EDL (Electronic Differential Lock)		X
EBD (Electronic Brake-force Distribution)		X
HVV (maximum rear axle deceleration)		X
MSR (engine drag torque control)		X
Mechanical locking differential, rear		X

# Amarok Specifications

X = standard   O = optional   - = not available

Amarok Specification	Amarok Double Cab 2.0 BITDI® 132kW 4MOTION® Highline
Wheelrims / Tyres	
"Manaus" 7.5J x 18" alloy wheels with 255/60 R18 112T tyres and anti-theft wheel bolts	X
Full-sized spare wheel (alloy)	X
Dimensions / Capacities	
Fuel tank (litres)	80
Vehicle Length (mm)	5254
Vehicle Height (mm)	1834
Vehicle Width excl. mirrors (mm)	1954
Wheelbase (mm)	3097
Turning circle (m)	12,95
Ground Clearance (mm) - measured under the front axle	192
Load compartment length (mm)	1555
Load compartment width (mm)	1620
Load compartment width between wheelhouses (mm)	1222
Load compartment height (mm)	508
Loading sill height (mm)	780
Load compartment area (m²)	2,52
Gross Vehicle Mass (GVM) (kg)	2820
Gross Vehicle Mass (GVM) (kg) with heavy-duty leaf springs (3+2) (Optional)	3040
Gross Combined Mass (GCM) (kg)	5550
Axle load limit front/rear (kg)	1385/1620
Trailer weight braked/unbraked, 12% gradient (kg)	3000/750
Payload without driver (kg)	838
Payload without driver (kg) with heavy-duty leaf springs (3+2)	1041
Unladen Mass without driver and fuel (kg)	1982
Unladen Mass without driver and fuel (kg) with heavy-duty leaf springs (3+2)	1999
Roof load limit (kg)	100
Trailer nose weight (kg)	120
Approach/Departure angle (degrees)	29.5/23.6
Ramp angle (degrees)	21,4
Roll-over angle (degrees)	49,7
Wading depth (mm)	500
Seats	
Number of seats	5
Height-adjustable head restraints	2 front and 3 rear

# Amarok Specifications

X = standard    O = optional    - = not available

Amarok Specification	Amarok Double Cab 2.0 BiTDI® 132kW 4MOTION® Highline
Seats (continued)	
Height-adjustable front seats	X
Lumbar support adjustable front seats (power-adjustable on Extreme)	X
Folding 3-seater rear bench seat	X
Fabric seat coverings "Salipra"	X
Leather* seat coverings "Vienna"	O
Seat heating for driver and front passenger seats	-
Storage drawers under front seats	X
Windows	
Electrically adjustable windows - front and rear	X
Heat-insulating glass all round	X
Heated rear window	X
Privacy glass in rear seat area	X
Mirrors	
Electrically adjustable and heated exterior mirrors	X
Electrically foldable, adjustable and heated exterior mirrors	X
Wiper System	
Intermittent wipers	X
Intermittent wipers with rain sensors	-
Safety	
Driver and front passenger airbag	X
Front passenger airbag deactivation	X
Front head/thorax side airbags	X
High level third LED brake light with load compartment lighting	X
3-point automatic seatbelts	2 front and 3 rear
Height-adjustable seatbelts	Front
Warning buzzer and light for driver and front passenger seatbelt not fastened	X
Anchorage points (2) for ISOFIX child-seat attachment on rear 3-seater bench	X
Bi-Xenon headlamps with LED daytime running lights	X
First Aid kit and warning triangle	X
Park Distance Control, front and rear	X
Park Distance Control, front and rear, with rear-view camera	O
Tyre Pressure Monitoring System	X
Security	
Immobiliser	X

# Amarok Specifications

X = standard   O = optional   - = not available

Amarok Specification	Amarok Double Cab 2.0 BiTDI® 132kW 4MOTION® Highline
Security (continued)	
Remote-controlled central locking	X
Anti-theft alarm system with passenger compartment control and towing protection	X
Steering lock, unbreakable	X
Lockable glove box	X
Lockable tailgate	X
Audio and Communication	
Aux-in	X
USB interface (iPod/iPhone/iPad capable)	X
App-Connect	X
"Composition Media" infotainment system, 6.33" Touchscreen with voice control	X
Bluetooth cellphone interface	X
6 speakers	X
Antenna integrated in exterior mirrors	X
Interior Features	
Climatronic airconditioning system, two zone (fully-automatic)	X
Power-steering	X
Leather-wrapped* steering wheel	-
Leather-wrapped* multi-function steering wheel, 3-spoke with shifting paddles on Extreme	X
Leather* hand-brake and gear-shift lever	X
Multi-function onboard computer (MFA)	"Plus" display
Carpet floor covering for front and rear passenger compartment	X
Anti-dazzle rear-view mirror	X
Sunvisor with vanity mirror	Driver and Passenger
Center console storage box with upholstered cover for armrest	X
Doors with stowage pockets each and integrated bottle holders	X
Cup holders front (2) and rear (2)	X
Spectacle storage compartment	X
Smoking package	X
Interior lights with front reading lights	X
Height- and reach-adjustable steering wheel	X
Headlight-range adjustment	X
Light & sight package with auto light and rain sensor	O
Cruise control	X

# Amarok Specifications

X = standard   O = optional   - = not available

Amarok Specification	Amarok Double Cab 2.0 BiTDI® 132kW 4MOTION® Highline
Interior Features (continued)	
12V socket in centre console, dashboard and load box (2nd row seats, Highline models)	X
Exterior Features	
Halogen headlamps with daytime running lights	X
Bi-xenon headlamps with LED daytime running lights	O
Darkened tail light cluster	X
Fog lights - front with cornering function	X
Rear fog lights	X
Chrome strip in upper radiator grille (six vertical chrome ribs on Highline models)	X
Body-coloured exterior mirror housings (incl. chrome application on Highline models)	X
Front bumper in body colour	-
Front bumper in body colour with chrome applications	X
Rear bumper with integrated step, chrome-plated	X
Flared wheel arches	X
Front and rear mudflaps	X
B-column covered with black film	X
Side "4MOTION®" decal	-
Trailer hitch preparation	X
Lashing points (x4) in loadbox for load restraint	X
Options	
Increased GVM from 2.8t to 3.0t (incl. heavy-duty leaf springs)	O
Electrically foldable exterior mirrors	X
Bi-xenon headlamps with LED daytime running lights	O
Climatronic airconditioning system, two zone (fully-automatic)	X
Front and rear Park Distance Control	X
Front and rear Park Distance Control with rear-view camera	O
Light & sight package with auto light and rain sensor	O
Leather-wrapped* multi-function steering wheel, 3-spoke (with shifting paddles on Extreme)	X
Rubber floor covering for front and rear passenger compartment	O
"Milford" 19" alloy wheels	O

# Amarok Specifications

X = standard    O = optional    - = not available

Amarok Specification	Amarok Double Cab 2.0 BITDI® 132kW 4MOTION® Highline
Guarantees	
3-year / 100,000 km manufacturer warranty	X
5-year / 90,000 km Volkswagen EasyDrive Vehicle Service Plan	X
15,000 km service intervals	X
6-year anti-corrosion warranty	X

**Disclaimer**

- 1. Dimensions, capacities and abilities apply to standard vehicles.
- 2. Actual consumption will vary with vehicle loading, driving style, climatic and road conditions.
- 3. This information was effective as at 01 June 2021 valid for model year 21 and 22 and is subject to change without notice.

All diesel vehicles require low sulphur grade diesel of 50 ppm or lower.

**\*Fuel Consumption and Carbon Dioxide Emission Figures**

Fuel consumption and CO<sub>2</sub> emissions values were obtained in accordance with the prescribed uniform measuring standard (SANS 20101: 2006 / ECE R101: 2005 in its currently applicable version). The verified values do not apply to a specific vehicle and do not constitute part of the product offer. They are provided solely for the purposes of comparison between different vehicle models. Because of the need to maintain strict comparability of results achieved by the standard tests, they cannot be fully representative of real-life driving conditions. Variations in driving styles and in road, vehicle and ambient conditions, will have a bearing on the results achieved on the road. For these reasons consumption achieved on the road will not necessarily accord with these verified values. Based on lightest variable (no options) and 90% tank filling. Weight may vary depending on options fitted to vehicle. All measurements listed are based on series vehicles. Because of manufacturing tolerances/tyre sizes/type of chassis, the actual dimensions may differ slightly from the values stated here. The information about the degree of slope angle front and rear as well as the ramp angle each refer to the loaded condition of the vehicle in consideration of the gross vehicle weight.

**\*\*A combination of leather and high quality durable materials.**

# Amarok Specifications

X = standard   O = optional   - = not available

Amarok Specification	Amarok Double Cab 2.0 BiTDI® 132kW Auto Highline	Amarok Double Cab 2.0 BiTDI® 132kW 4MOTION® Auto Highline	Amarok Double Cab 3.0 TDI 190kW 4MOTION® Auto Highline
Engine			
Cylinders	4	4	6
Capacity (cm³)	1968	1968	2967
Output (kW @ r/min)	132 @ 4000	132 @ 4000	190 @ 3250 - 4500
Torque (Nm @ r/min)	420 @ 1500-2000	420 @ 1500-2000	580 @ 1400- 3000
CO <sub>2</sub> emissions (g/km)**	216	219	250
Transmission			
6-speed manual	-	-	-
8-speed automatic	X	X	X
Performance			
Acceleration in seconds (0-100 km/h)	11,0	11,3	7,6
Fuel Consumption			
Urban cycle (litres/100 km)**	10,1	11,0	10,5
Extra-urban cycle (litres/100 km)**	7,4	7,6	8,5
Combined cycle (litres/100 km)**	8,4	8,9	9,5
Running Gear			
Independent suspension with double triangular wishbone spring and damper, front	X	X	X
Multilayer rigid axle with leaf springs, rear	X	X	X
Front and rear stabilisers	X	X	X
Rear-wheel drive	X	-	-
Shiftable 4WD with low range gears	-	-	-
Permanent 4WD	-	X	X
Brakes			
Hydraulic braking system with ventilated disc brakes, front (16")	X	X	-
Hydraulic braking system with ventilated disc brakes, front (17")	-	-	X
Brake drum in the rear	X	X	-
16-inch brake disc in the rear	-	-	X
ESC (Electronic Stabilisation Control) with brake assistant and Hill Start/Hill Descent Assist	X	X	X
ABS (Anti-lock Braking System) incl. offroad ABS	X	X	X
ASR (Anti-Slip regulation)	X	X	X
TCS (Traction Control System)	X	X	X
EDL (Electronic Differential Lock)	X	X	X
EBD (Electronic Brake-force Distribution)	X	X	X
HVV (maximum rear axle deceleration)	X	X	X
MSR (engine drag torque control)	X	X	X
Mechanical locking differential, rear	X	X	X
Full-sized spare wheel (alloy)	X	X	X

# Amarok Specifications

X = standard   O = optional   - = not available

Amarok Specification	Amarok Double Cab 2.0 BiTDI® 132kW Auto Highline	Amarok Double Cab 2.0 BiTDI® 132kW 4MOTION® Auto Highline	Amarok Double Cab 3.0 TDI 190kW 4MOTION® Auto Highline
Wheelrims / Tyres			
"Manaus" 7.5J x 18" alloy wheels with 255/60 R18 112T tyres and anti-theft wheel bolts	X	X	X
Full-sized spare wheel (alloy)	X	X	X
Dimensions / Capacities			
Fuel tank (litres)	80	80	80
Vehicle Length (mm)	5254	5254	5254
Vehicle Height (mm)	1834	1834	1834
Vehicle Width excl. mirrors (mm)	1954	1954	1954
Wheelbase (mm)	3097	3097	3097
Turning circle (m)	12,95	12,95	12,95
Ground Clearance (mm) - measured under the front axle	192	192	192
Load compartment length (mm)	1555	1555	1555
Load compartment width (mm)	1620	1620	1620
Load compartment width between wheelhouses (mm)	1222	1222	1222
Load compartment height (mm)	508	508	508
Loading sill height (mm)	780	780	780
Load compartment area (m²)	2,52	2,52	2,52
Gross Vehicle Mass (GVM) (kg)	2820	2820	-
Gross Vehicle Mass (GVM) (kg) with heavy-duty leaf springs (3+2) (*Optional)	3040	3040	3080
Gross Combined Mass (GCM) (kg)	5550	5950	6000
Axle load limit front/rear (kg)	1365/1620	1416/1620	1445/1630
Trailer weight braked/unbraked, 12% gradient (kg)	2800/750	3200/750	3500/750
Payload without driver (kg)	912	838	1010
Payload without driver (kg) with heavy-duty leaf springs (3+2)	1115	1041	1010
Unladen Mass without driver and fuel (kg)	1908	1982	-
Unladen Mass without driver and fuel (kg) with heavy-duty leaf springs (3+2)	1925	1999	2070
Roof load limit (kg)	100	100	100
Trailer nose weight (kg)	120	130	130
Approach/Departure angle (degrees)	29.5/23.6	29.5/23.7	28/23.6
Ramp angle (degrees)	23	21,4	21,4
Roll over angle (degrees)	49,7	49,7	49,7
Wading depth (mm)	500	500	500
Seats			
Number of seats	5	5	5

# Amarok Specifications

X = standard O = optional - = not available

Amarok Specification	Amarok Double Cab 2.0 BiTDI® 132kW Auto Highline	Amarok Double Cab 2.0 BiTDI® 132kW 4MOTION® Auto Highline	Amarok Double Cab 3.0 TDI 190kW 4MOTION® Auto Highline
<b>Seats (continued)</b>			
Height-adjustable head restraints	2 front and 3 rear	2 front and 3 rear	2 front and 3 rear
Height-adjustable front seats	X	X	X
Lumbar support adjustable front seats (power-adjustable on Extreme)	X	X	X
Folding 3-seater rear bench seat	X	X	X
Fabric seat coverings "Salipra"	-	-	-
Leather* seat coverings "Vienna"	X	X	X
Seat heating for driver and front passenger seats	O	O	O
Storage drawers under front seats	X	X	X
<b>Windows</b>			
Electrically adjustable windows - front and rear	X	X	X
Heat-insulating glass all round	X	X	X
Heated rear window	X	X	X
Privacy glass in rear seat area	X	X	X
<b>Mirrors</b>			
Electrically adjustable and heated exterior mirrors	X	X	X
Electrically foldable, adjustable and heated exterior mirrors	X	X	X
<b>Wiper System</b>			
Intermittent wipers	X	X	X
Intermittent wipers with rain sensors	O	O	X
<b>Safety</b>			
Driver and front passenger airbag	X	X	X
Front passenger airbag deactivation	X	X	X
Front head/thorax side airbags	X	X	X
High level third LED brake light with load compartment lighting	X	X	X
3-point automatic seatbelts	2 front and 3 rear	2 front and 3 rear	2 front and 3 rear
Height-adjustable seatbelts	Front	Front	Front
Warning buzzer and light for driver and front passenger seatbelt not fastened	X	X	X
Anchorage points (2) for ISOFIX child-seat attachment on rear 3-seater bench	X	X	X
Bi-Xenon headlamps with LED daytime running lights	X	X	X
First Aid Kit and warning triangle	X	X	X
Park Distance Control, front and rear	-	-	-
Park Distance Control, front and rear, with rear-view camera	X	X	X
Tyre Pressure Monitoring System	X	X	X

# Amarok Specifications

X = standard O = optional - = not available

Amarok Specification	Amarok Double Cab 2.0 BiTDI® 132kW Auto Highline	Amarok Double Cab 2.0 BiTDI® 132kW 4MOTION® Auto Highline	Amarok Double Cab 3.0 TDI 190kW 4MOTION® Auto Highline
<b>Security</b>			
Immobiliser	X	X	X
Remote-controlled central locking	X	X	X
Anti-theft alarm system with passenger compartment control and towing protection	X	X	X
Steering lock, unbreakable	X	X	X
Lockable glove box	X	X	X
Lockable tailgate	X	X	X
<b>Audio and Communication</b>			
Aux-in	X	X	X
USB interface (iPod/iPhone/iPad capable)	X	X	X
App-Connect	X	X	X
"Discover Media" infotainment system, 6.33" Touchscreen with Navigation	O	O	O
Bluetooth cellphone interface	X	X	X
Composition Media Infotainment System 6.33" Touchscreen	-	-	X
6 speakers	X	X	X
Antenna integrated in exterior mirrors	X	X	X
<b>Interior Features</b>			
Climatronic airconditioning system, two zone (fully-automatic)	X	X	X
Power-steering	X	X	X
Leather-wrapped* multi-function steering wheel, 3-spoke (with shifting paddles on Extreme)	X	X	X
Leather* handbrake and gearshift lever	X	X	X
Stainless steel appearance pedal caps	-	-	-
Multi-function onboard computer (MFA)	"Plus" display	"Plus" display	"Plus" display
Carpet floor covering for front and rear passenger compartment	X	X	X
Anti-dazzle rear-view mirror	X	X	X
Sunvisor with vanity mirror	Driver and Passenger	Driver and Passenger	Driver and Passenger
Center console storage box with upholstered cover for armrest	X	X	X
Doors with stowage pockets each and integrated bottle holders	X	X	X
Cup holders front (2) and rear (2)	X	X	X
Spectacle storage compartment	X	X	X
Smoking package	X	X	X
Interior lights with front reading lights	X	X	X
Height- and reach-adjustable steering wheel	X	X	X
Headlight-range adjustment	X	X	X
Light & sight package with auto light and rain sensor	O	O	X

# Amarok Specifications

X = standard   O = optional   - = not available

Amarok Specification	Amarok Double Cab 2.0 BiTDI® 132kW Auto Highline	Amarok Double Cab 2.0 BiTDI® 132kW 4MOTION® Auto Highline	Amarok Double Cab 3.0 TDI 190kW 4MOTION® Auto Highline
Interior Features (continued)			
Cruise control	X	X	X
12V socket in centre console, dashboard and load box (2nd row seats, Highline models)	X	X	X
Exterior Features			
Bi-xenon headlamps with LED daytime running lights	X	X	X
Darkened tail light cluster	X	X	X
Licence plate light	X	X	X
Fog lights - front with cornering function	X	X	X
Rear fog lights	X	X	X
Chrome strip in upper radiator grille (six vertical chrome ribs on Highline models)	X	X	X
Body-coloured exterior mirror housings (incl. chrome application on Highline models)	X	X	X
Front bumper in body colour with chrome applications	X	X	X
Rear bumper with integrated step, chrome-plated	X	X	X
Flared wheel arches	X	X	X
Front and rear mudflaps	X	X	X
B-column covered with black film	X	X	X
Trailer hitch preparation	X	X	X
Lashing points (x4) in loadbox for load restraint	X	X	X
Options			
Increased GVM from 2.8t to 3.0t (incl. heavy-duty leaf springs)	O	O	X
Discover Media Infotainment System 6.3" touchscreen with navigation	O	O	O
Light & sight package with auto light and rain sensor	O	O	X
Rubber floor covering for front and rear passenger compartment	O	O	O

# Amarok Specifications

X = standard   O = optional   - = not available

Amarok Specification	Amarok Double Cab 2.0 BiTDI® 132kW Auto Highline	Amarok Double Cab 2.0 BiTDI® 132kW 4MOTION® Auto Highline	Amarok Double Cab 3.0 TDI 190kW 4MOTION® Auto Highline
<b>Options (continued)</b>			
"Milford" 19" alloy wheels	O	O	O
<b>Guarantees</b>			
3-year / 100,000 km manufacturer warranty	X	X	X
5-year / 90,000 km Volkswagen EasyDrive Vehicle Service Plan	X	X	X
15,000 km service intervals	X	X	X
6-year anti-corrosion warranty	X	X	X

## Disclaimer

1. Dimensions, capacities and abilities apply to standard vehicles.
2. Actual consumption will vary with vehicle loading, driving style, climatic and road conditions.
3. This information was effective as at 01 June 2021 valid for model year 21 and 22 and is subject to change without notice.

All diesel vehicles require low sulphur grade diesel of 50 ppm or lower.

## \*Fuel Consumption and Carbon Dioxide Emission Figures

Fuel consumption and CO<sub>2</sub> emissions values were obtained in accordance with the prescribed uniform measuring standard (SANS 20101: 2006 / ECE R101: 2005 in its currently applicable version). The verified values do not apply to a specific vehicle and do not constitute part of the product offer. They are provided solely for the purposes of comparison between different vehicle models. Because of the need to maintain strict comparability of results achieved by the standard tests, they cannot be fully representative of real-life driving conditions. Variations in driving styles and in road, vehicle and ambient conditions, will have a bearing on the results achieved on the road. For these reasons consumption achieved on the road will not necessarily accord with these verified values. Based on lightest variable (no options) and 90% tank filling. Weight may vary depending on options fitted to vehicle. All measurements listed are based on series vehicles. Because of manufacturing tolerances/tyre sizes/type of chassis, the actual dimensions may differ slightly from the values stated here. The information about the degree of slope angle front and rear as well as the ramp angle each refer to the loaded condition of the vehicle in consideration of the gross vehicle weight.

**\*\*A combination of leather and high quality durable materials.**

# Amarok Specifications

X = standard   O = optional   - = not available

Amarok Specification		Amarok Double Cab 3.0 TDI 190kW 4MOTION® Auto Extreme
Engine		
Cylinders		6
Capacity (cm³)		2967
Output (kW @ r/min)		190 @ 2350- 4500
Torque (Nm @ r/min)		580 @ 1400- 3000
CO <sub>2</sub> emissions (g/km)**		250
Transmission		
8-speed automatic		X
Performance		
Acceleration in seconds (0-100 km/h)		7.6
Fuel Consumption		
Urban cycle (litres/100 km)**		10,5
Extra-urban cycle (litres/100 km)**		8,5
Combined cycle (litres/100 km)**		9,5
Running Gear		
Independent suspension with double triangular wishbone spring and damper, front		X
Multilayer rigid axle with leaf springs, rear		X
Front and rear stabilisers		X
Permanent 4WD		X
Brakes		
Hydraulic braking system with ventilated disc brakes, front (17")		X
16-inch brake disc in the rear		X
ESC (Electronic Stabilisation Control) with brake assistant and Hill Start/Hill Descent Assist		X
ABS (Anti-lock Braking System) incl. offroad ABS		X
ASR (Anti-Slip Regulation)		X
TCS (Traction Control System)		X
EDL (Electronic Differential Lock)		X
EBD (Electronic Brake-force Distribution)		X
HVV (maximum rear axle deceleration)		X
MSR (engine drag torque control)		X
Mechanical locking differential, rear		X

# Amarok Specifications

X = standard   O = optional   - = not available

Amarok Specification	Amarok Double Cab 3.0 TDI 190kW 4MOTION® Auto Extreme
Wheelrims / Tyres	
"Talca" 8J x 20" alloy wheels with 255/50 R20 109H tyres and anti-theft wheel bolts	X
Full-sized spare wheel (alloy)	X
Dimensions / Capacities	
Fuel tank (litres)	80
Vehicle Length (mm)	5254
Vehicle Height (mm)	1834
Vehicle Width excl. mirrors (mm)	1954
Wheelbase (mm)	3097
Turning circle (m)	12,95
Ground Clearance (mm) - measured under the front axle	192
Load compartment length (mm)	1555
Load compartment width (mm)	1620
Load compartment width between wheelhouses (mm)	1222
Load compartment height (mm)	508
Loading sill height (mm)	780
Load compartment area (m²)	2,52
Gross Vehicle Mass (GVM) (kg)	2920
Gross Vehicle Mass (GVM) (kg) with heavy-duty leaf springs (3+2) (Optional)	3080
Gross Combined Mass (GCM) (kg)	6000
Axle load limit front/rear (kg)	1445/1630
Trailer weight braked/unbraked, 12% gradient (kg)	3300/750
Payload without driver (kg)	867
Payload without driver (kg) with heavy-duty leaf springs (3+2)	1010
Unladen Mass without driver and fuel (kg)	2053
Unladen Mass without driver and fuel (kg) with heavy-duty leaf springs (3+2)	2070
Roof load limit (kg)	100
Trailer nose weight (kg)	130
Approach/Departure angle (degrees)	28/23.6
Ramp angle (degrees)	21,4
Roll-over angle (degrees)	49,7
Wading depth (mm)	500
Seats	
Number of seats	5
Height-adjustable head restraints	2 front and 3 rear
Height-adjustable front seats	X
Lumbar support adjustable front seats (power-adjustable on Extreme)	X
Folding 3-seater rear bench seat	X

# Amarok Specifications

X = standard   O = optional   - = not available

Amarok Specification	Amarok Double Cab 3.0 TDI 190kW 4MOTION® Auto Extreme
Seats (continued)	
Special edition "Nappa" leather seat** trim covers	X
Seat heating for driver and front passenger seats	X
"ergoComfort" driver and front passenger seat with 14-way adjustment	X
Storage drawers under front seats	-
Windows	
Electrically adjustable windows - front and rear	X
Heat-insulating glass all round	X
Heated rear window	X
Privacy glass in rear seat area	X
Mirrors	
Electrically adjustable and heated exterior mirrors	X
Electrically foldable, adjustable and heated exterior mirrors	X
Wiper System	
Intermittent wipers	X
Intermittent wipers with rain sensors	X
Safety	
Driver and front passenger airbag	X
Front passenger airbag deactivation	X
Front head/thorax side airbags	X
High level third LED brake light with load compartment lighting	X
3-point automatic seatbelts	2 front and 3 rear
Height-adjustable seatbelts	Front
Warning buzzer and light for driver and front passenger seatbelt not fastened	X
Anchorage points (2) for ISOFIX child-seat attachment on rear 3-seater bench	X
Bi-Xenon headlamps with LED daytime running lights	X
First Aid kit and warning triangle	X
Park Distance Control, front and rear with rear view camera	X
Tyre Pressure Monitoring System	X
Security	
Immobiliser	X
Remote-controlled central locking	X
Anti-theft alarm system with passenger compartment control and towing protection	X
Steering lock, unbreakable	X
Lockable glove box	X
Lockable tailgate	X
Audio and Communication	
Aux-in	X

# Amarok Specifications

X = standard    O = optional    - = not available

Amarok Specification		Amarok Double Cab 3.0 TDI 190kW 4MOTION® Auto Extreme
Audio and Communication (continued)		
USB interface (iPod/iPhone/iPad capable)		X
App-Connect		X
"Composition Media" infotainment system, 6.33" Touchscreen with voice control		-
"Discover Media" infotainment system, 6.33" Touchscreen with Navigation		X
Bluetooth cellphone interface		X
6 speakers		X
Antenna integrated in exterior mirrors		X
Interior Features		
Climatronic airconditioning system, two zone (fully-automatic)		X
Black Greenhouse roof lining		X
Power-steering		X
Leather* handbrake and gearshift lever		X
Leather-wrapped* multi-function steering wheel, 3-spoke (with shifting paddles on Extreme)		X
Stainless steel appearance pedal caps		X
Multi-function onboard computer (MFA)		"Premium" display
Carpet floor covering for front and rear passenger compartment		X
Anti-dazzle rear-view mirror		X
Sunvisor with vanity mirror		Driver and Passenger
Center console storage box with upholstered cover for armrest		X
Doors with stowage pockets each and integrated bottle holders		X
Cup holders front (2) and rear (2)		X
Spectacle storage compartment		X
Smoking package		X
Interior lights wih front reading lights		X
Height- and reach-adjustable steering wheel		X
Headlight-range adjustment		X
Light & sight package with auto light and rain sensor		X
Cruise control		X
12V socket in centre console, dashboard and load box (2nd row seats, Highline models)		X
Exterior Features		
Bi-xenon headlamps with LED daytime running lights		X
Darkened tail light cluster		X
Licence plate light		X
Fog lights - front with cornering function		X
Rear fog lights		X
Chrome strip in upper radiator grille (six vertical chrome ribs on Highline models)		X

# Amarok Specifications

X = standard   O = optional   - = not available

Amarok Specification	Amarok Double Cab 3.0 TDI 190kW 4MOTION® Auto Extreme
Exterior Features (continued)	
Body-coloured exterior mirror housings (incl. chrome application on Highline models)	X
Front bumper in body colour with chrome applications	X
Rear bumper with integrated step, chrome-plated	X
Flared wheel arches	X
Front and rear mudflaps	X
B-column covered with black film	X
Side "4MOTION®" decal	X
Trailer hitch preparation	X
Lashing points (x4) in loadbox for load restraint	X
Options	
Increased GVM from 2.8t to 3.0t (incl. heavy-duty leaf springs)	O
Rubber floor covering for front and rear passenger compartment	O
Sports Bar in body colour	O

# Amarok Specifications

X = standard    O = optional    - = not available

Amarok Specification	Amarok Double Cab 3.0 TDI 190kW 4MOTION® Auto Extreme
Guarantees	
3-year / 100,000 km manufacturer warranty	X
5-year / 90,000 km Volkswagen EasyDrive Vehicle Service Plan	X
15,000 km service intervals	X
6-year anti-corrosion warranty	X

**Disclaimer**

- 1. Dimensions, capacities and abilities apply to standard vehicles.
- 2. Actual consumption will vary with vehicle loading, driving style, climatic and road conditions.
- 3. This information was effective as at 01 June 2021 valid for model year 21 and 22 and is subject to change without notice.

All diesel vehicles require low sulphur grade diesel of 50 ppm or lower.

**\*Fuel Consumption and Carbon Dioxide Emission Figures**

Fuel consumption and CO<sub>2</sub> emissions values were obtained in accordance with the prescribed uniform measuring standard (SANS 20101: 2006 / ECE R101: 2005 in its currently applicable version). The verified values do not apply to a specific vehicle and do not constitute part of the product offer. They are provided solely for the purposes of comparison between different vehicle models. Because of the need to maintain strict comparability of results achieved by the standard tests, they cannot be fully representative of real-life driving conditions. Variations in driving styles and in road, vehicle and ambient conditions, will have a bearing on the results achieved on the road. For these reasons consumption achieved on the road will not necessarily accord with these verified values. Based on lightest variable (no options) and 90% tank filling. Weight may vary depending on options fitted to vehicle. All measurements listed are based on series vehicles. Because of manufacturing tolerances/tyre sizes/type of chassis, the actual dimensions may differ slightly from the values stated here. The information about the degree of slope angle front and rear as well as the ramp angle each refer to the loaded condition of the vehicle in consideration of the gross vehicle weight.

**\*\*A combination of leather and high quality durable materials.**

# Amarok Service & Maintenance Plans

Volkswagen EasyDrive Vehicle Maintenance Plans	Amarok Double Cab 2.0 BiTDI® 132kW 4MOTION® Auto Dark Label	Amarok Double Cab 3.0 TDI 165kW 4MOTION® Auto Canyon	Amarok Double Cab 2.0 BiTDI® 132kW 4MOTION® Highline	Amarok Double Cab 2.0 BiTDI® 132kW Auto Highline
Maintenance Plan (5-year / 90 000 km)	R9,208			
Maintenance Plan (5-year / 120 000 km)	R30,033			
Maintenance Plan (6-year / 150 000 km)	R44,342			
Maintenance Plan (6-year / 180 000 km)	R59,641			
Maintenance Plan (7-year / 210 000 km)	R73,666			
Maintenance Plan (8-year / 240 000 km)	R94,633			
Maintenance Plan (9-year / 270 000 km)	R109,225			
Maintenance Plan (10-year / 300 000 km)	R124,666			
Subject to an Active Standard Volkswagen warranty or an Active Genuine Volkswagen Service Plan				

Volkswagen EasyDrive Vehicle Service Plans	Amarok Double Cab 2.0 BiTDI® 132kW 4MOTION® Auto Dark Label	Amarok Double Cab 3.0 TDI 165kW 4MOTION® Auto Canyon	Amarok Double Cab 2.0 BiTDI® 132kW 4MOTION® Highline	Amarok Double Cab 2.0 BiTDI® 132kW Auto Highline
Service Plan (5-year/ 120 000 km)	R10,801			
Service Plan (6-year/ 150 000 km)	R16,004			
Service Plan (6-year/ 180 000 km)	R22,166			
Service Plan (7-year / 210 000km)	R27,534			
Service Plan (8-year / 240 000km)	R40,015			
Service Plan (9-year / 270 000km)	R45,217			
Service Plan (10-year / 300 000km)	R53,224			

# Amarok Service & Maintenance Plans continued

Volkswagen EasyDrive Vehicle Maintenance Plans	Amarok Double Cab 2.0 BiTDI® 132kW 4MOTION® Auto Highline	Amarok Double Cab 3.0 TDI 165kW 4MOTION® Auto Highline	Amarok Double Cab 2.0 BiTDI® 132kW Auto Highline PLUS	Amarok Double Cab 2.0 BiTDI® 132kW 4MOTION® Auto Highline PLUS	Amarok Double Cab 3.0 TDI 190kW 4MOTION® Auto Highline	Amarok Double Cab 3.0 TDI 190kW 4MOTION® Auto Extreme
Maintenance Plan (5-year / 90 000 km)	R9,208					
Maintenance Plan (5-year / 120 000 km)	R30,033					
Maintenance Plan (6-year / 150 000 km)	R44,342					
Maintenance Plan (6-year / 180 000 km)	R59,641					
Maintenance Plan (7-year / 210 000 km)	R73,666					
Maintenance Plan (8-year / 240 000 km)	R94,633					
Maintenance Plan (9-year / 270 000 km)	R109,225					
Maintenance Plan (10-year / 300 000 km)	R124,666					
Subject to an Active Standard Volkswagen warranty or an Active Genuine Volkswagen Service Plan						

<b>Volkswagen EasyDrive Vehicle Service Plans</b>	<b>Amarok Double Cab 2.0 BiTDI® 132kW 4MOTION® Auto Highline</b>	<b>Amarok Double Cab 3.0 TDI 165kW 4MOTION® Auto Highline</b>	<b>Amarok Double Cab 2.0 BiTDI® 132kW Auto Highline PLUS</b>	<b>Amarok Double Cab 2.0 BiTDI® 132kW 4MOTION® Auto Highline PLUS</b>	<b>Amarok Double Cab 3.0 TDI 190kW 4MOTION® Auto Highline</b>	<b>Amarok Double Cab 3.0 TDI 190kW 4MOTION® Auto Extreme</b>
Service Plan (5-year/ 120 000 km)	R10,801					
Service Plan (6-year/ 150 000 km)	R16,004					
Service Plan (6-year/ 180 000 km)	R22,166					
Service Plan (7-year / 210 000km)	R27,534					
Service Plan (8-year / 240 000km)	R40,015					
Service Plan (9-year / 270 000km)	R45,217					
Service Plan (10-year / 300 000km)	R53,224					

# The Amarok



**Steady on the trails. Spirited on the asphalt.  
The Amarok combines everything that you expect  
from an exclusive, premium-class all-rounder:  
A masculine design and robust construction along  
with plenty of power, capable to tackle anything.**

#### **2.0 4 cylinder BiTDI**

With a power output of 132kW and torque of 420Nm.

#### **3.0 V6 TDI engine**

With a power output of up to 190kW,  
overboost of 200kW and torque of up to 580Nm.

#### **Interior design**

A cockpit, practical storage and only vehicle with award-winning,  
14-way adjustable "ergoComfort" seats (on Extreme model).

#### **Exterior design**

Grill design sports bar (optional on Extreme) and alloy wheels  
of up to 20-inches.

#### **Unique drive combination**

Permanent 4MOTION® all-wheel drive with a 8-speed automatic gearbox,  
plus selectable 4MOTION including low range with 6-speed manual gearbox.  
4 x 2 with 8-speed automatic gearbox. Towing load of up to 3.5 tons,  
even whilst carrying a 1-ton payload.

#### **Best load platform surface usage**

Widest and deepest load platform with easiest moving  
tailgate in its class.

#### **Optimised safety**

Automatic Post-Collision Braking System, 17-inch disc brakes  
at the front and 16-inch disc brakes in the rear (V6 models).

#### **High safety across all terrains**

Unique off-road Anti-lock Braking System, Hill Descent Control, Hill Start  
Assist, Electronic Stabilisation Control, Anti-Slip Regulation, Traction  
Control System, Electronic Differential Lock, Electronic Brake-force  
Distribution, Maximum Rear Axle Deceleration, Engine Drag Torque  
Control and Multi-Collision Braking.

#### **Modern infotainment systems**

Radio and navigation systems with App-Connect mobile online services.



# The Amarok Highline 4MOTION Manual

## For the experience.

On the outside, you'll see the Amarok making tough look effortless. But what you don't see is the TDI engine that combines 132 kW of power and 400 Nm of torque with outstanding fuel efficiency. You don't see the 4MOTION® system or unique off-road ABS, ASR and ESP that ensure a steady ride over even the harshest terrain. It's the under-the-skin technology that makes tough possible.

### Standard equipment

#### Exterior

- 18-inch "Manaus" alloy wheels
- Radiator grille with two horizontal chrome and six vertical chrome strips
- Colour-coded front bumper and door handles
- Colour-coded door mirror housings, chrome sections
- Privacy glass
- Chrome rear bumper with built-in step
- Tinted tail lights

#### Interior

- "Salipra" fabric upholstery
- Dash panel with decorative inserts in Light Silver
- Handbrake lever and gear lever knob
- Chrome trim in the interior
- Map pockets behind the driver and front passenger seats
- Four 12 V sockets

### Operating equipment

- "Climatronic" airconditioning
- "Composition Media" radio system with six loudspeakers
- Instrument cluster with "Plus" multi-function display
- Leather-covered multi-function steering wheel
- Cruise control system

### Safety

- Fog lights with chrome frame
- Park Distance Control in the front and rear
- Tyre pressure monitoring System

# The Amarok Highline



## The Amarok Highline is built for the explorers.

It offers premium driving comfort, even under the toughest of conditions. This is due to the perfect harmony created between the running gear and drive calibration – combined with the proven and tested 4MOTION® all-wheel drive which knows how to pack a punch when it needs to.

### Standard equipment

#### Exterior

- 18-inch “Manaus” alloy wheels
- Radiator grille with two double chrome strips and six vertical chrome trims
- Bi-xenon headlights with LED daytime running lights
- Colour-coded front bumper and door handles
- Colour-coded door mirror housings, chrome sections
- Privacy glass
- Chrome rear bumper with built-in step
- Tinted tail lights

#### Interior

- “Vienna” leather seat upholstery
- Dash panel with decorative inserts in Light Silver
- Leather-covered handbrake lever and gear lever knob
- Chrome trim in the interior
- Map pockets behind the driver and front passenger seats
- Four 12 V sockets

#### Operating equipment

- “Climatronic” airconditioning
- “Discover Media” navigation system with six loudspeakers
- Instrument cluster with “Plus” multi-function display
- Leather-covered multi-function steering wheel
- Cruise control system

#### Safety

- 17-inch disc brakes at the front, 16-inch disc brakes in the rear (V6 only)
- Fog lights with chrome frame
- Park Distance Control in the front and rear
- “Rear View” reversing camera



# The Amarok Extreme

**For an exclusive look.**

The Amarok Extreme is built to withstand the toughest terrains. The Extreme comes with a Automatic with a Automatic Post-Collision Braking System, 17-inch disc brakes at the front and 16-inch disc brakes in the rear as standard.

Masculinity and safety. Everything you could ever want in a bakkie.

## **Standard equipment**

### **Exterior**

- 20-inch "Talca" alloy wheels
- Radiator grille with two double chrome strips and six vertical chrome trims
- Bi-xenon headlights with LED daytime running lights
- Colour-coded front bumper and door handles
- Colour-coded exterior mirrors, chrome sections
- Privacy glass
- Optional - colour-coded sports bar with "Extreme" badge
- Side steps
- Load surface with special coating
- 4MOTION® decals
- Chrome rear bumper with built-in step
- Tinted tail lights

### **Interior**

- "Nappa" leather seat upholstery in Black
- Dash panel with decorative inserts in Light Silver
- Chrome trim in the interior
- ergoComfort seats for the driver and front passenger (12-way electrical adjustment, 2-way manual adjustment)
- Map pockets behind the driver and front passenger seats
- Stainless steel pedals
- Four 12 V sockets

### **Operating equipment**

- "Climatronic" airconditioning
- "Discover Media" navigation system with six loudspeakers
- Instrument cluster with "Premium Colour" multi-function display
- Leather-covered multi-function steering wheel
- Cruise control system

### **Safety**

- 17-inch disc brakes at the front, 16-inch disc brakes in the rear (V6 only)
- Fog lights with chrome frame
- Park Distance Control in the front and rear
- "Rear View" reversing camera

# V6



## Stronger

3.0 V6 TDI engine and the only bakkie in its class with an 8-speed automatic gearbox. Powerful like no other: the 190kW six-cylinder turbodiesel engine with 3.0 capacity has more than enough reserves, even in the most demanding situations. Additional power comes from the overboost function, which briefly increases the performance of the V6 190kW TDI engine up to 200kW depending on the driving situation.

Equally unique: the option to combine the 8-speed automatic gearbox with permanent 4MOTION® all-wheel drive. While the first gear has been specifically optimised for pulling off on steep slopes, when towing a trailer and when in tough terrain, the eighth gear reduces fuel consumption through low-speed driving on long journeys.

# Standard for all **Amarok equipment lines**



## **Exterior**

- Front design
- Cargo box with loading width of 1,222 mm
- Smooth functioning tailgate
- Privacy glass

## **Interior**

- Height-adjustable driver and front passenger seat
- Steering wheel, height- and reach-adjustable
- Carpet floor covering in the front and rear
- Folding seats on the rear bench seat

## **Operating equipment**

- Hill Descent and Hill Start Assist
- Central locking with radio remote control
- One-touch auto electric windows all-round
- Electrically adjustable and heated exterior mirrors
- Heated rear window

## **Safety**

- Off-road ABS (Anti-lock Braking System)
- Automatic Post-Collision Braking System
- Driver and front passenger airbags, side / head airbags
- Electronic Stabilisation Programme with trailer stabilisation
- Daytime running lights
- Third brake light in LED design
- Four lashing eyes on the load platform

# Interior & Comfort



**"Premium Colour" multi-function display.**

A high-resolution 3D colour display and animated menu guidance so that everything is a pleasure to control. | EX |

**"Plus" multi-function display (not illustrated).**

Up-to-date information, such as remaining range, outside temperature and average consumption, conveniently displayed in the instrument cluster. | HL |



**Leather-covered multi-function steering wheel with paddles.** For excellent grip and a premium feel.

Ergonomic paddles allow you to change gears for a sportier driving style. | EX |

**Multi-function steering.** The radio or navigation system and your mobile phone can be controlled using the buttons within easy reach. | HL |

**Winter package (not illustrated).** Making the start of the day that little bit easier in the cold months. This package includes heated windscreen washer nozzles, a washer fluid display and seat heating for the driver and front passenger seat. | HL | EX |



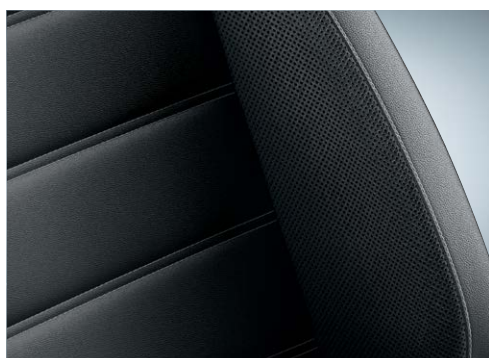
**"Climatic" airconditioning (not illustrated).** This semi-automatic airconditioning system has an interior sensor to constantly compare the interior temperature with the desired temperature in the vehicle, and then adjusts it accordingly.

Depending on the intensity of the sun's rays and the outside temperature, the airconditioning adds more or less cool air to ensure the interior temperature remains comfortable. | HL | EX |

**12 V sockets (not illustrated).** Up to three 12 V sockets are available inside the vehicle: one in the dash panel, one in the central console and one in the second row of seats. (A fourth socket is located in the load bin for external power requirements) | HL | EX |



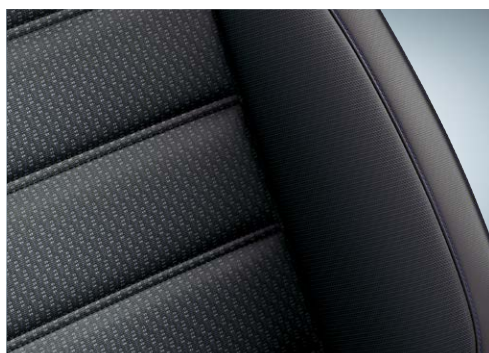
# Seat Upholstery



**"Nappa"** leather seat upholstery  
in Black | EX |



**"Vienna"** leather seat upholstery



**"Salipra"** leather seats upholstery  
in Palladium | HL |

# Infotainment



**Voice control.** Operate the telephone, navigation and audio functions without taking your hands off the steering wheel. And call up virtually all of the menus and notifications on the radio or navigation system display using voice commands. | HL | EX |

**Electronic voice amplification (not illustrated).**

This function makes sure that passengers in the rear seats can hear the driver. The voice input is recorded through a hands-free microphone, amplified, and then transmitted over the loudspeaker in the rear with no delay.

| HL | EX |



**“Composition Media” radio system.** Consists of a 16.5 cm TFT colour display, a touchscreen with proximity sensors, voice control, an MP3, AAC and WMA-compatible CD drive, 4 x 20 watt with six loudspeakers, a dual tuner with PhaseDiversity and electronic voice amplification. | HL |

**App-Connect.** App-Connect guarantees the best possible connection between you and your smart device whilst driving. With this software, selected apps from your smartphone can be used while driving. App-Connect supports MirrorLink™, Apple CarPlay™ and Android Auto™. | HL | EX |



**“Discover Media” navigation system.** In addition to the “Composition Media” features, this system includes a second SD card slot and an SD card with map data for built-in navigation. | HL | EX |

\*The electronic voice amplification is included in the “Composition Media” radio system and “Discover Media” navigation system.

\* Buttons shown on the radio images may change.

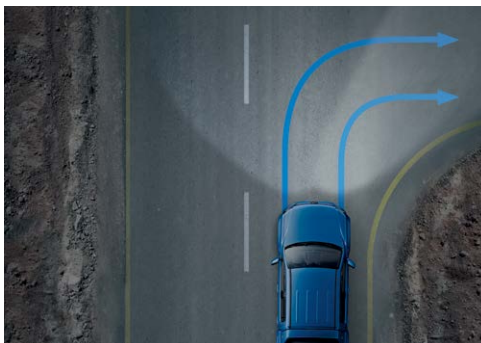
# Drivers assistance **Systems**



**ParkPilot.** Emits audible warnings when obstacles are detected in front of or behind the vehicle while parking. A visual display of the vehicle's distance from the obstacles is also provided. | HL | EX |



**"Rear View" reversing camera.** Simplifies parking and trailer hitching by showing a limited view of the area behind the vehicle on the display of the radio or navigation system. Static guidelines overlaid on the screen facilitate the parking process. | HL | EX |

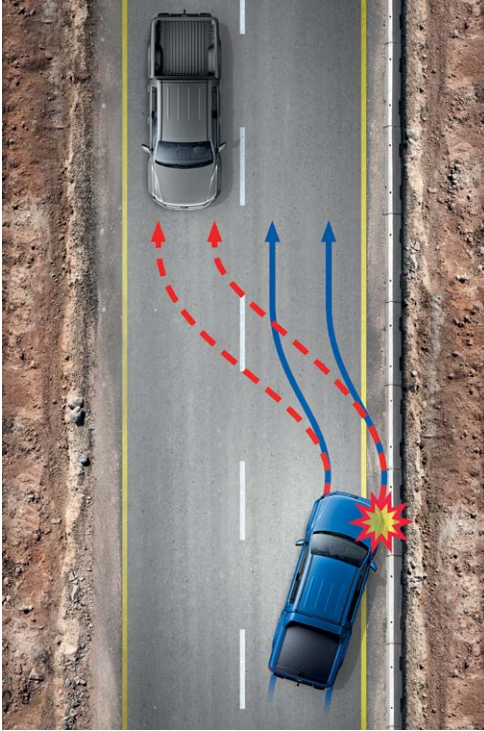


**Fog lights with integrated static turning light.** Ensures optimal visibility in poor weather conditions. The headlight nearest to the corner illuminates the roadside when turning. | HL | EX |

**Light and Sight package (not illustrated).** The windscreen wipers are activated if it starts raining and the wiping interval is adapted to the amount of rain. The interior mirror is automatically tinted if the headlights in the vehicle behind are too bright. Also included in the package: automatic driving light control when darkness starts to fall, as well as the "coming home / leaving home" function which illuminates the vehicle surrounds when approaching or leaving the vehicle in darkness, prompted by the remote unlocking button on the key. | HL | EX |

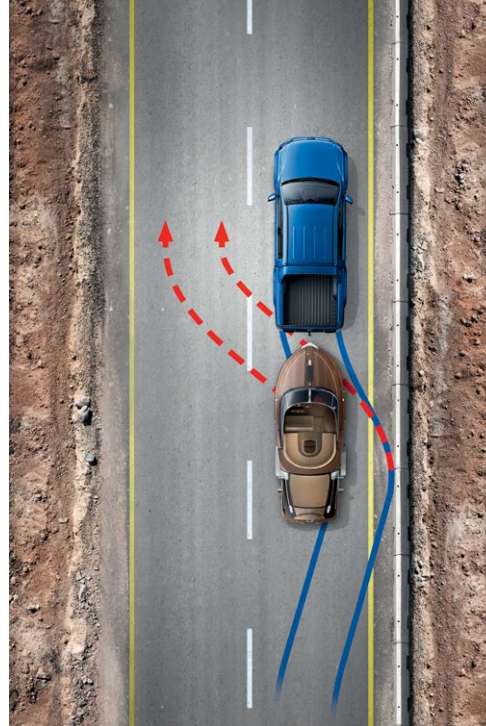
\* Buttons shown on the radio images may change.

# Safety Systems



**Automatic Post-Collision Braking System.** Triggers braking after a collision, with the aim of preventing secondary collisions. After a short delay, the vehicle begins a phased braking action down to 10 km/h, during which the driver can take over at any time.  
| HL | EX |

**Electronic stabilisation programme (not illustrated).** Prevents under- or over-steering via targeted braking of individual wheels.  
| HL | EX |



**Trailer stabilisation.** Should the trailer start to fluctuate heavily, this system automatically slows it down by means of controlled braking and reduced engine torque. This steadies the trailer and increases driving safety. **Feature only available when fitted with a genuine Volkswagen electrical harness.** | HL | EX |

**Anti-theft warning system (not illustrated).** Triggers acoustic and visual warnings at signs of unauthorised entry. As well as interior monitoring, the system includes an electronic immobiliser, a safe-lock (which can be deactivated) and a tow-away warning.  
| HL | EX |



# Off-road Performance



**On-demand 4MOTION® all-wheel drive.** A transfer case enables the front wheels to be electrically engaged and disengaged while driving. On steep inclines or longer stretches of gravel, an additional reduction gear can also be activated. The adjustable 4MOTION® all-wheel drive is combined with the 6-speed manual gearbox.

| HL |

**Electro-mechanical differential lock (not illustrated).** The vehicle also has an Electro-mechanical differential lock as standard which ensures ideal traction on sandy and slippery terrain. Following activation, both of the rear wheels are powered with even power and even speed.

| HL | EX |

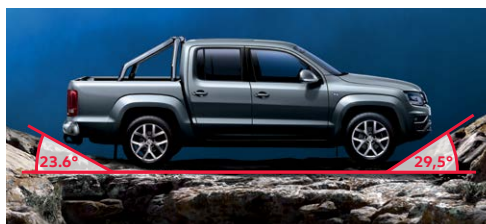


**Permanent 4MOTION® all-wheel drive.** This 4x4 drive system with a self-locking Torsen central differential is unique in the bakkie segment and provides a balanced 40:60 distribution for all on-road and off-road tasks. This vehicle also comes into its own on the road by significantly increasing traction when cornering. The only vehicle in its class to offer 4MOTION® permanent all-wheel drive with an 8-speed automatic gearbox.

| HL | EX |



**Brake-over angle.** Thanks to its increased ground clearance and depending on the loading condition, the Amarok can even climb ramps with an angle of up to 23.0°. | HL | EX |



**Slope angle and wading depth.** The maximum slope angle for the Amarok is 29.5° at the front and 23.6°<sup>2)</sup> at the rear. It has a wading depth of 500 mm. | HL | EX |



**Gradients.** The Amarok handles up to 45° inclines with a payload of up to 1 t. | HL | EX |



**Lateral gradient.** The broad wheelbase of the Amarok, coupled with the placement of the wheels on the side of the chassis (unique amongst bakkies), provides a lower centre of gravity and thus outstanding stability, even when driving along slopes with a 49.7° incline. | HL | EX |



**Off-road ABS.** Once activated, the unique Off-road ABS locks the wheels for longer intervals when braking on loose surfaces to build up a wedge of gravel which significantly reduces the braking distance. | HL | EX |



**Hill Descent Control.** This allows you to drive down slopes in a safe, controlled way, thanks to the engine management's ability to govern the engine speed, and apply the brakes when driving off-road if necessary. The vehicle's speed is maintained at a constant crawling pace. | HL | EX |

\*The distribution varies depending on the surface. The values vary depending on the equipment and engine.  
Please contact your local Volkswagen Commercial Vehicles dealer for details of the standard equipment and optional extras applicable.

# Load Platform

The widest and deepest load bin in its class.



**Load platform lighting.** The third brake light doubles up to provide light on the load platform, allowing you to load your cargo in the dark.

| HL | EX |

**Lashing eyes** (not illustrated). The cargo box is equipped with four robust lashing eyes mounted securely on the chassis frame for added safety. Two are located near the front and two are at the back, behind the wheel housing.

| HL | EX |



**Wheel arches.** The Amarok is the only bakkie that can fit a Euro pallet between its wheel arches. It has a lockable tailgate with a clever Torsen bar system to make closing the tailgate effortless.

| HL | EX |



# Towing Capacity

Exceptionally robust and with a premium finish, the Amarok is built to impress, even during heavy use. A warp-resistant ladder frame, which guarantees excellent body stability, and special leaf springs allow for a maximum payload of up to 1.0 t and a trailer load of up to 3.5 t.

The standard 2+1 leaf springs offer high driving comfort and a maximum payload of 876 kg, while the optional 3+2 leaf springs increase the payload to up to 1.010 t (optional on all models except Amarok Highline V6 which has the 3+2 leaf springs as standard).

# Colours

The illustrations on this page can only be regarded as a general guide as the printing process cannot render the true depth and brilliance of the paint finishes with absolute accuracy. Please note that certain paint and trim combinations may not be available.



**Candy White**  
Solid | HL | EX |



**Deep Black**  
Pearl Effect | HL | EX |



**Mojave Beige**  
Metallic | HL | EX |



**Indium Grey**  
Metallic | HL | EX |



**Atlantic Blue**  
Metallic | EX | HL |



**Pyrite Silver**  
Metallic | EX | HL |

# Wheels

## Roll resistance-optimised tyres (not illustrated).

All Amarok models are equipped with fuel-conserving summer tyres as standard. These are manufactured from a special rubber compound which minimises deformation from driving. This can reduce fuel consumption depending on the speed.

| EX | HL |



### "Manaus"

alloy wheel 7.5 J x 18

With 255/60 R 18 tyres | HL |



### "Milford"

alloy wheel 8.0 J x 19

With 255/55 R 19 tyres | HL | EX |



### "Talca"

alloy wheel 8.0 J x 20

With 255/50 R 20 tyres | EX |

# Volkswagen Accessories

The Amarok is a multi-functional, comfortable premium vehicle equipped with everything you wish for. If you would like to have a few extras, Volkswagen Accessories offers interesting additional equipment options, which have been developed in cooperation with our Development and Design department. The extras represent high quality, and are only available at your Volkswagen Dealer.



**"Aspen" alloy wheel: 2H0071496A 8Z8**

6 ½ J x 16. These alloy wheels are also compatible with snow chains. | **HL** | **EX** |

**Tarpaulin and attachments.** With just a few simple steps the tarpaulin is secured to the cargo box's quick-release brackets, protecting your cargo against inclement weather and from fall out during the journey. The storage box cannot be combined with the styling bar. | **HL** | **EX** |



**Cargo Area Cover, folding, plastic: 2H7071779B**



**Cargo area cover, aluminium: 2H7071779D**



#### **Side bars: 2H0071693A**

The gloss-finish stainless steel bars can hold up to 200 kg and have a diameter of 76 mm; they can be secured to the standard attachment points without any additional drilling. | HL | EX |



#### **Side bars with steps: 2H0071691E 72A**

These bars also feature a high-gloss stainless steel pipe, lending the vehicle a sportier, more dynamic feel. They are fitted with sturdy steps and can hold up to 200 kg. These side bars are also available in



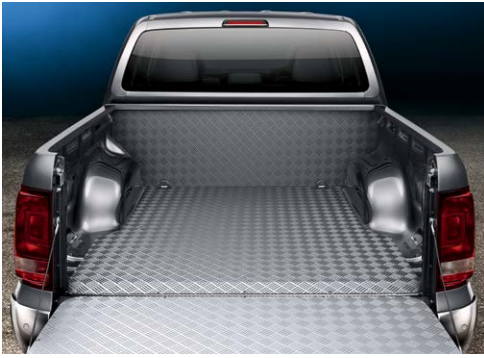
#### **10 -11 Decorative film with "Amarok" batches.**

**Silver: 2H0064317 9S    Black: 2H0064317 19A**

The four high-quality, silver-coloured design films\* with punched out logo emphasise the stylish side of the Amarok. They are attached in the lower areas of the doors. The batches are also available in Black.

| HL | EX |

\*Decorative film may show signs of wear and tear or ageing, in particular when subjected to direct sunlight, after a period of 1 to 3 years or even within 1 year in very hot climates. If the decorative film remains on the vehicle for an extended period of time, visual differences may appear between the area protected by the film and the paint finish that is not covered by film. Volkswagen Accessories are offered by Volkswagen Zubehör GmbH, An der Trift 67, 63303 Dreieich, <https://shops.volkswagen.com>, and are available only at your Volkswagen Commercial Vehicles dealer. You can find additional accessories in our full catalogue which is available from your Volkswagen Dealer. Please contact your local Volkswagen Commercial Vehicles dealer for details of the standard equipment and optional extras applicable in your country.



#### Aluminium load platform cladding: 2H7061164H

The front panel, the load surface and the loading flap are protected by tailor-made corrugated aluminium panels while the side panels are protected by custom-fit plastic trays.

| HL | EX |



#### Robust hardtop with sliding windows.

This colour-coded hard top design comes with a front sliding window and side windows that can be locked from the inside. | HL | EX |

<b>White:</b>	<b>2H7071776B B9A</b>
<b>Reflex Silver Metallic:</b>	<b>2H7071776B A7W</b>
<b>Deep Black:</b>	<b>2H7071776B C9X</b>
<b>Starlight Blue Metallic:</b>	<b>2H7071776B T5U</b>



#### "Service" hardtop.

Colour-coded panelled side flaps and top tailgate with a glass window are easy to open and close, providing easy access to the cargo box.

| HL | EX |

<b>Candy White:</b>	<b>2H7071776H WKF</b>
<b>Reflex Silver Metallic:</b>	<b>2H7071776H A7W</b>
<b>Deep Black Pearl effect:</b>	<b>2H7071776H C9X</b>
<b>Starlight Blue Metallic:</b>	<b>2H7071776H T5U</b>





Commercial  
Vehicles



This information was effective as at June 2021  
valid for model year 21 and 22 and is subject to  
change without notice.

Visit us at [vw.co.za](http://vw.co.za)

©Volkswagen South Africa