



# Polo Vivo



# Polo Vivo Hatch Specification

X = standard O = optional - = not available

Polo Vivo Hatch Specification	1.4 Trendline 55kW	1.4 Comfortline 63kW	1.6 Comfortline Tiptronic® 77kW	1.6 Highline 77kW	1.0 TSI GT 81kW
Engine					
Cylinders	4	4	4	4	3
Capacity (cm³)	1398	1398	1598	1598	999
Bore/Stroke (mm)	76,5 / 75,6	76,5 / 75,6	76,5 / 86,9	76,5 / 86,9	74.5 / 76.4
Valves (per cylinder)	4	4	4	4	4
Compression Ratio	10.5 : 1	10.5 : 1	10.5 : 1	10.5 : 1	-
Fuel Injection	X	X	X	X	X
CO <sub>2</sub> Emissions (g/km)	132	140	144	147	114
Transmission					
5-speed manual	X	X	-	X	-
6-speed manual	-	-	-	-	X
6-speed manual Tiptronic®	-	-	X	-	-
Performance					
Power output (kW @ r/min)	55 @ 4800	63 @ 5000	77 @ 5250	77 @ 5250	81 @ 5000
Torque (Nm @ r/min)	130 @ 3,750	132 @ 3,750	153 @ 3800	153 @ 3800	200 @ 2000
Fuel consumption (litres / 100 km)*					
Extra-urban	4,5	4,8	4,9	4,8	4
Urban cycle	7,6	7,9	8,2	8,5	5,5
Combined	5,7	5,9	6,1	6,2	4,8
Performance:					
Top speed (km/h)	171	177	188	188	196
Running Gear					
Front axle:					
Lowered suspension	-	-	-	-	X
Raised suspension (15mm)	-	-	X	-	-
Suspension struts, wishbone	X	X	X	X	X
Rear axle:					
Suspension struts, toe correcting, torsion beam, trailing arm axle	X	X	X	X	X
Brakes					
Brake fluid warning indicator	X	X	X	X	X
Brake pressure regulator	X	X	X	X	X
Front discs	X	X	X	X	X
Rear drum brakes	X	X	X	X	X
ABS with EBD	X	X	X	X	X
Wheelrims / tyres					
Full wheel trim covers	X	X	X	-	-
Steel spare wheel with original equipment tyre	X	-	-	-	-
Space-saving spare wheel	-	X	X	X	X
Wheel cover 5J X 14 steel 185/60 R 14	X	-	-	-	-
“Estrada” 6J X 15 alloy 185/60 R 15	O	X	X	-	-
“Rivazza” 7J X 16 alloy 195/55 R 16	-	O	O	X	-
“Mirabeau” 7J X 17 alloy 215/40 R17	-	-	-	-	X
Dimensions / Capacities					
Fuel tank 45l	X	X	X	X	X
Luggage compartment 280l	X	X	X	X	X
(seats folded 952l)	X	X	X	X	X
DIN Kerb Weight (kg) (Kerb weight may vary depending on options fitted to vehicle)	1063	1066	1102	1081	1092
Gross Vehicle Mass (kg)	1530	1540	1570	1540	1530

# Polo Vivo Hatch Specification

X = standard O = optional - = not available

Polo Vivo Hatch Specification	1.4 Trendline 55kW	1.4 Comfortline 63kW	1.6 Comfortline Tiptronic® 77kW	1.6 Highline 77kW	1.0 TSI GT 81kW
Dimensions / Capacities (continued)					
Length (mm)	3972	3972	3972	3972	3972
Width (mm)	1682	1682	1682	1682	1682
Height (mm)	1462	1462	1462	1462	1447
Track - front (mm)	1463	1463	1463	1463	1463
Track - rear (mm)	1456	1456	1456	1456	1456
Turning circle (m)	10,6	10,6	10,6	10,6	10,6
Wheel base (mm)	2470	2470	2470	2470	2470
Ground Clearance (mm)	143	143	143	143	128
Towing Capacity Braked (kg)	-	1000	1000	1000	1000
Towing Capacity Unbraked (kg)	-	570	580	570	580
Audio & Communication					
Radio 140G SD/USB/Bluetooth with B-sting/2 Speakers and 2 Tweeters	X	X	X	-	-
Radio 340G SD/USB/Bluetooth/App-Connect with B-sting/2 Speakers and 2 Tweeters	-	O	O	-	-
Radio 340G SD/USB/Bluetooth/App-Connect with B-sting/4 Speakers and 2 Tweeters	-	-	-	X	X
Safety					
Driver and passenger airbags	X	X	X	X	X
ISOFIX child seat mounting points in rear	X	X	X	X	X
Childproof locks on rear doors	X	X	X	X	X
High level brake light	X	X	X	X	X
Front fog lights	-	X	X	X	X
Parking package (rear-view camera with rear PDC)	-	O	O	O	O
Electronic Stability Control	O	O	X	X	X
Tyre Pressure Monitor	O	O	X	X	X
Lights and Vision Package (Rain Sensor + Dusk Sensor)	-	O	O	O	X
LED Headlights Package (incl. Lights and Vision Package) forces PXX on Comfortline Manual	-	O	O	O	O
Security					
Immobiliser	X	X	X	X	X
Alarm with Remote Central locking	X	X	X	X	X
Ultrasonic alarm sensors	X	X	X	X	X
We Connect Go	X	X	X	X	X
Mirrors					
Aspherical driver's side	X	X	X	X	X
Black exterior mirrors	X	-	-	-	-
Body-coloured exterior mirrors	-	X	X	X	X
Manual and remotely adjustable mirrors from inside	X	X	X	X	X
Windows					
	X				
Tinted glass all round	X	X	X	X	X
Heated rear window	X	X	X	X	X
Front electric windows	X	X	X	X	X
Wiper System					
Intermittent wiper	X	X	X	X	X
Rear wiper	X	X	X	X	X
Interior Features					
Heating and fresh air ventilation system	X	X	X	X	X
Cup holders, 2 integrated into centre console	X	X	X	X	X

# Polo Vivo Hatch Specification

X = standard O = optional - = not available

Polo Vivo Hatch Specification	1.4 Trendline 55kW	1.4 Comfortline 63kW	1.6 Comfortline Tiptronic® 77kW	1.6 Highline 77kW	1.0 TSI GT 81kW
Interior Features (continued)					
Digital clock	X	X	X	X	X
Digital trip recorder	X	X	X	X	X
Co-driver vanity mirror	X	X	X	X	X
Electronic rev counter	X	X	X	X	X
Front door pockets	X	X	X	X	X
Height-adjustable steering column	X	X	X	X	X
Reach-adjustable steering column	X	X	X	X	X
3-spoke steering wheel	X	X	X	-	-
Multi-function Steering Wheel	-	X	X	-	-
3-spoke mufu leather steering wheel with aluminium inserts	O	O	O	X	X
Painted upper centre console - Anthracite	X	X	X	X	-
Painted upper centre console - Colour	-	-	-	-	X
Anthracite sunvisors	-	-	-	-	X
Anthracite headlining/cover and A,B,C post uppers	-	-	-	-	X
Leatherette gearshift boot	X	X	X	X	X
High tone hooter	X	X	X	X	X
Lights on warning buzzer	X	X	X	X	X
Manual anti-dazzle rear-view mirror	X	X	X	X	X
Power steering	X	X	X	X	X
Manually controlled airconditioner	X	X	X	X	X
Multi-function Display	-	X	X	X	X
Cruise control	-	O	O	X	X
Sport pedal cluster	-	-	-	-	X
Loose-lay carpets mats	O	O	O	O	X
Seats					
Height-adjustable front head restraints	X	X	X	X	X
Rear head restraints	X	X	X	X	X
Rear seat bench backrest - fixed folding	X	X	X	X	X
Height-adjustable driver seat	-	X	X	X	X
"Tradition" cloth seat trim	X	-	-	-	-
"City" cloth seat trim	-	X	X	-	-
"Cable" cloth seat trim	-	-	-	X	-
"Space" cloth seat trim	-	-	-	-	X
Front Sports Seats	-	-	-	-	X

# Polo Vivo Hatch Specification

X = standard O = optional - = not available

Polo Vivo Hatch Specification	1.4 Trendline 55kW	1.4 Comfortline 63kW	1.6 Comfortline Tiptronic® 77kW	1.6 Highline 77kW	1.0 TSI GT 81kW
Exterior Features					
Body-coloured bumpers	X	X	X	X	X
Black door handles	X	-	-	-	-
Body-coloured door handles	-	X	X	X	X
Black painted roof	-	-	-	-	-
Rear tailgate spoiler	-	-	-	-	X
Underbody guard	-	-	X	-	-
GT lettering on the tailgate, front grille and sides	-	-	-	-	X
Black side moulding	-	-	-	-	X
Sporty single-pipe exhaust system with chrome trim	-	-	-	-	X
Black Styling Package + 16" Portago Alloy Wheels	-	O	-	O	-
Guarantees					
Warranty 3-year / 120 000 km	X	X	X	X	X
Anti-corrosion Warranty (6 years)	X	X	X	X	X
15 000 km service intervals	X	X	X	X	X
Volkswagen EasyDrive Vehicle Maintenance Plan	O	O	O	O	O
Volkswagen EasyDrive Vehicle Service Plan	O	O	O	O	O
Disclaimer					
<p>Dimensions, capacities and abilities apply to standard vehicles from model year 23.</p> <p>Actual consumption will vary with vehicle loading, driving style, climatic and road conditions.</p> <p>This information was effective as at 12 January 2023 valid for model year 23 and is subject to change without notice.</p>					



# Share the ride



**The Polo Vivo is here and  
it's equipped with a variety  
of features to suit you and  
your crew.**

From the front electric windows, ISOFIX mounting points for baby seats, Ultrasonic alarm, to its stylish exterior and sound system, the Polo Vivo has it all. With features as attractive as this, everyone will want to share the ride.





# Style comes standard

The Polo Vivo looks  
as smooth as it drives.  
With its smart design  
and handy features, it's no  
wonder it grabs attention.

Features you can expect across the Polo Vivo range:

- Front electric windows
- ISOFIX mounting points for baby seats
- Ultrasonic alarm system

For more information on standard features and optional extras on selected models, visit [www.vw.co.za](http://www.vw.co.za)



# Black Style Package

## Add even more style to your Polo Vivo with the Black Style package.

This sleek design includes a gloss black finish on the roof, mirror caps, 16" Portago wheels and pillar covers. Other striking features like the matt black side sill covers, lowered suspension (~15mm), body-coloured R-Line boot spoiler, privacy glass and chrome exhaust tip, give this package even more attitude.

Available on the Comfortline Manual and Highline model.





# It's what's on the inside **that counts**



Note that this is a Highline with optional features

**As the adage goes, it's what's on the inside that counts – the same is true for Polo Vivo. It raises the bar for vehicles in its category.**

**Standard features you can expect in the Polo Vivo include:**

- Electronic rev counter
- Digital clock
- Digital trip recorder
- Passenger vanity mirror
- Front door pockets
- Height- and reach-adjustable steering column
- Manual anti-dazzle rear-view mirror
- Power steering
- Airconditioning

For more information on optional extras on selected models, visit [www.vw.co.za](http://www.vw.co.za)



Note that this is a Highline with optional features

# Innovation has never **looked this good**

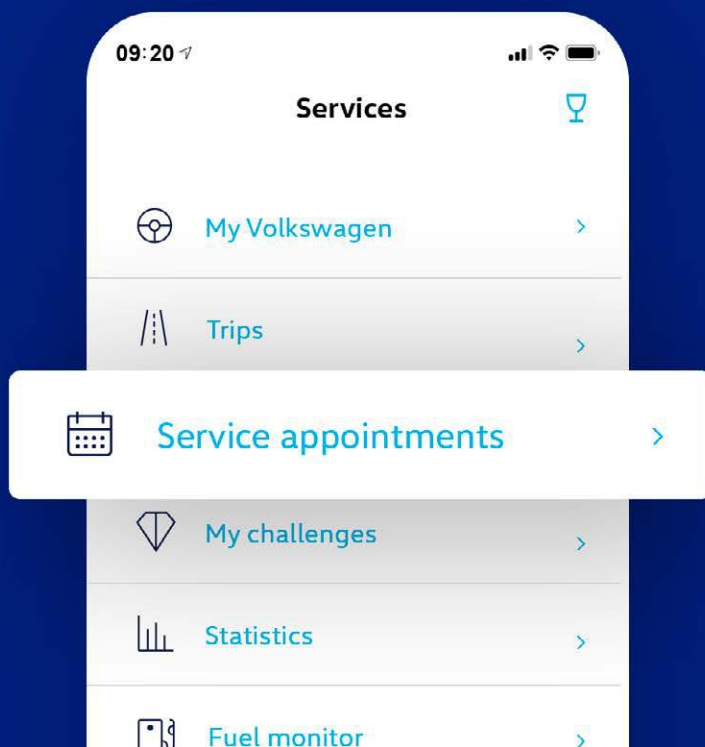
**The Polo Vivo is equipped  
with more digital features  
than any other small car in  
its category.**

The 340G radio with SD, USB, Bluetooth, App-Connect with B-sting/2 speakers and 2 tweeters are optional on the Comfortline. All these features, as well as 4 speakers and 2 tweeters, come standard on the Highline and GT.

App-Connect allows you to access certain smartphone functions such as selected apps, maps and music through the Android Auto and CarPlay applications.

For more information on standard features and optional extras on selected models, visit [www.vw.co.za](http://www.vw.co.za)

# Your personal **car companion**



**Get ready to experience the next generation of Volkswagen connectivity with the We Connect Go App and DataPlug, an optional feature in the Polo Vivo.**

We Connect Go takes the Volkswagen digital user experience to a new level by connecting you with your Volkswagen using a Bluetooth-connected DataPlug, which comes standard. With it, you have all the important vehicle information you need, at your fingertips. You will be able to:

- Record vehicle journeys and fuelling costs
- Find your car without searching
- Quickly call for help in cases of emergency
- Analyse and help optimise your driving style





# Feel safe and sound in the **Polo Vivo**

**When you get behind the wheel of a Polo Vivo, you can trust that you and your passengers are well protected. From airbags to ISOFIX mounting points for baby seats, young and old will be safeguarded. Knowing that your car comes with these features, is just one more reason to own a Polo Vivo.**

Features you can expect in the Polo Vivo:

- Driver & passenger airbags
- ISOFIX baby seat mounting points
- Childproof locks on rear doors
- High-level brake light
- Electronic Stability Control (Optional on the Trendline and manual Comfortline)
- Tyre Pressure Monitor (Optional on the Trendline and manual Comfortline)





# More power **to you**

**If you're looking for punch  
and potency in a car, we have  
something for you.**

The Trendline comes with a power output of 55kW and the Comfortline (manual) with 63kW, Comfortline Tiptronic® and Highline all come with 77kW and GT comes with 81kW. While all five trim lines share a bunch of attractive features, they also come with their own optional and standard key features. At the end of the day, how you like your Polo Vivo is entirely up to you.

# Raising the bar on tar



**When you get behind the wheel of the Polo Vivo GT, you'll agree that it's in a class of its own and as stylish as it is sporty.**

It comes with attractive exterior features such as 17" 'Mirabeau' wheels and a single pipe exhaust with chrome trim. Interior attributes include a 1.0 TSI 81kW engine, front Sport seats, aluminium-look pedals and 'Anthracite' headlining.

More features you can expect in the GT:

- Cruise Control
- Lowered suspension (-15mm)
- GT logo on sides of vehicle and grille
- 'Anthracite' sunvisors
- 'Space' seat trim
- Light and Vision Package
- Tailgate spoiler in black

# Colours

The illustrations on this page can only be regarded as a general guide as the printing process cannot render the true depth and brilliance of the paint finishes with absolute accuracy. Please note that certain paint and trim combinations may not be available.

## Polo Vivo



**Reef Blue**  
Metallic



**Pure White**



**Limestone Grey**  
Metallic



**Reflex Silver**  
Metallic



**Black Style Package**

# Wheels & Rims



14" steel wheels  
(Standard on Trendline)



**Estrada**  
15" alloy wheels  
(Standard on Comfortline / Optional on Trendline)



**Rivazza**  
16" alloy wheels  
(Standard on Highline / Optional on Comfortline)

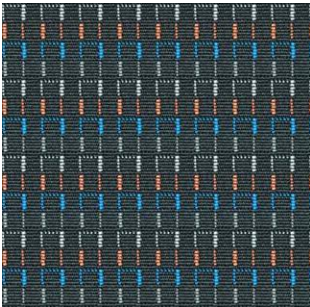


**Mirabeau**  
17" alloy wheels  
(Standard on GT)

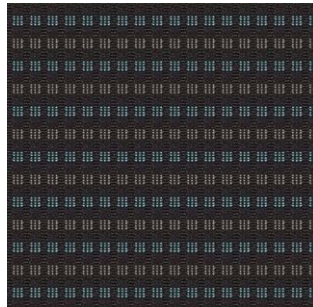


**Portago**  
16" gloss black alloy wheels  
(Optional on Comfortline and Highline with Black Style Package)

# Trims



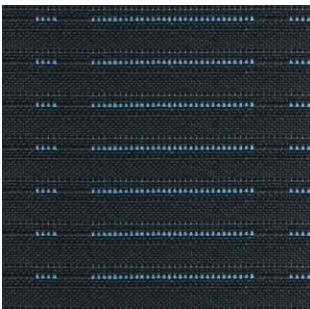
**Tradition**  
Cloth seat trim  
(Standard on Trendline)



**City**  
Cloth seat trim  
(Standard on Comfortline)



**Cable**  
Cloth seat trim  
(Standard on Highline)



**Space**  
Cloth seat trim  
(Standard on GT)





This information was effective as at 12 January 2023  
valid for model year 23 and is subject to change without notice.

Visit us at [vw.co.za](http://vw.co.za)  
©Volkswagen South Africa