



# Polo Vivo



# Index

**03** Introduction

**04** Design

**05** Features

**10** Wheels, Rim & Trims

**17** Paint Finishes



# The crowd favourite

## Smart meets stylish.

The Polo Vivo is a crowd favourite. With versatile features like front electric windows, ISOFIX mounting points for baby seats and an ultrasonic alarm, it's got something for everyone. Created to turn heads, the Polo Vivo has the beauty, power and innovation of a Volkswagen vehicle - with its vibrant exterior, impressive interior and unmatched power output.

<b>Trendline:</b>	<b>1.4 55kW</b>
<b>Comfortline:</b>	<b>1.4 63kW</b>
<b>Comfortline Tiptronic®:</b>	<b>1.6 77kW</b>
<b>Highline:</b>	<b>1.6 77kW</b>
<b>TSI GT:</b>	<b>1.0 81kW</b>

\*For more information on standard features and optional extras on selected models, visit [www.vw.co.za](http://www.vw.co.za).



# It speaks for itself

Join the dark side with the Polo Vivo Black Style package. The gloss black finish on the roof, mirror caps, 16" Portago wheels and pillar covers make a statement without saying a word. Demand attention with matt black side sill covers, lowered suspension (-15mm), body-coloured GT boot spoiler, privacy glass and chrome exhaust tip. With this sleek and daring design, the Polo Vivo speaks for itself.

\*Available on the Comfortline Manual and Highline model.



# Sit back and relax

The Polo Vivo cockpit is tailored to your every need. Standard with an electronic rev counter, digital clock and digital trip recorder, the Vivo is always thinking a step ahead. The air-conditioning, passenger vanity mirror and front door pockets maximize your comfort, while the height- and reach-adjustable steering column, power steering and manual anti-dazzle rear-view mirror ensure the best driving conditions for the journey.

\*For more information on optional extras on selected models, visit [www.vw.co.za](http://www.vw.co.za)



# Never miss a beat

The Polo Vivo range, from the Trendline to the GT, is equipped with a 6,5 inch touchscreen radio with SD, USB, Bluetooth, App-Connect with B-sting/2 speakers and 2 tweeters. In addition to these features, the Highline and GT come standard with 4 speakers and 2 tweeters.

App-Connect allows you to access your iPhone/CarPlay screen, selected apps, maps and music by syncing with the infotainment system.

For more information on standard features and optional extras on selected models, visit [www.vw.co.za](http://www.vw.co.za)



# Stay in touch

Stay in touch, even when you're away. Using We Connect Go, the Polo Vivo seamlessly connects your smartphone to your Volkswagen via Bluetooth using the DataPlug, keeping you in tune with your Polo Vivo. Compatible with Android and iOS devices, the We Connect Go app shows you your logbook, fuel monitor, driving style analysis and driving statistics, services and schedules, breakdown assistance and parking space locator.

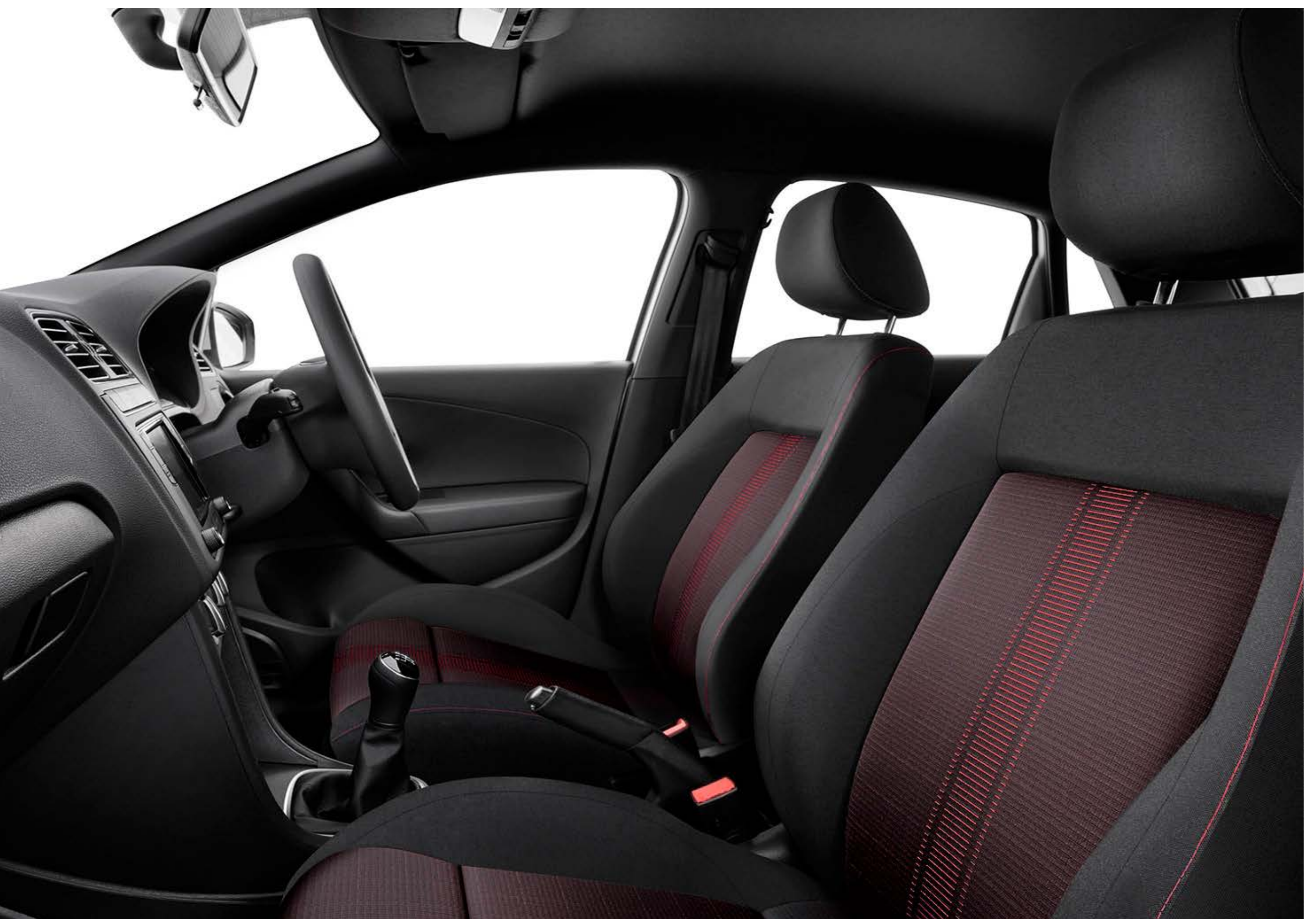


# Safe and **sound**

Drive with confidence knowing the Polo Vivo has got you covered. ISOFIX baby seat mounting points and childproof locks on rear doors ensure safe travels for baby, while the driver and passenger airbags and high-level brake light keep everyone protected in the event of an accident. The Polo Vivo not only protects but prevents accidents too, using the high-level brake light, Electronic Stability Control and Tyre Pressure Monitor. German-engineering you can trust, the new Polo Vivo puts your safety first.

\*Electronic Stability Control and Tyre Pressure Monitor are optional across the Trendline and manual Comfortline models

\*Red stitching available on Polo Vivo GT model only





# More life more power

Body: Experience the thrill of the Polo Vivo GT. With a sleek and dynamic exterior, this high-performance Volkswagen sports 17-inch "Mirabeau" wheels and a single pipe exhaust with chrome trim. Both stylish and athletic, 1.0 TSI 81kW engine, along with front sport seats, aluminium-look pedals and 'Anthracite' headlining.



# Range



# Trendline

## Features of Trendline

---

- ✓ 1.4 55kW
- ✓ Optional 6Jx15" "Estrada" alloy wheel
- ✓ "Tradition" seat trim

# Range



# Comfortline

## Features of Comfortline

---

- ✓ 1.4 63kW
- ✓ 6Jx15" "Estrada" alloy wheel
- ✓ "City" seat trim
- ✓ Multi-function Steering Wheel

# Range



## Comfortline Tiptronic®

### Features of Comfortline Tiptronic®

---

- ✓ 1.6 77kW
- ✓ 6Jx15" "Estrada" alloy wheel
- ✓ "City" seat trim
- ✓ Multi-function Steering Wheel

# Range



# Highline

## Features of Highline

---

- ✓ 1.6 77kW
- ✓ 7Jx16" "Rivazaa" alloy wheel
- ✓ Cruise Control
- ✓ "Cable" seat trim
- ✓ 3-spoke mufu leather steering wheel with aluminium inserts

# Range



## TSI GTI

### Features of TSI GTI

---

- ✓ 1.0 81kW
- ✓ 7Jx17" "Mirabeau" alloy wheel
- ✓ Cruise Control
- ✓ 'Space' seat trim
- ✓ Lowered suspension (-15mm)
- ✓ GT logo on sides of vehicle and grille
- ✓ 'Anthracite' sunvisors
- ✓ Light and Vision Package
- ✓ Tailgate spoiler in black



**14" steel wheels**  
(Standard on Trendline)



**15" Estrada Alloy**  
(Standard on Comfortline  
/Optional on Trendline)



**16" Rivazza Alloy**  
(Standard on Highline  
/Optional on Comfortline)

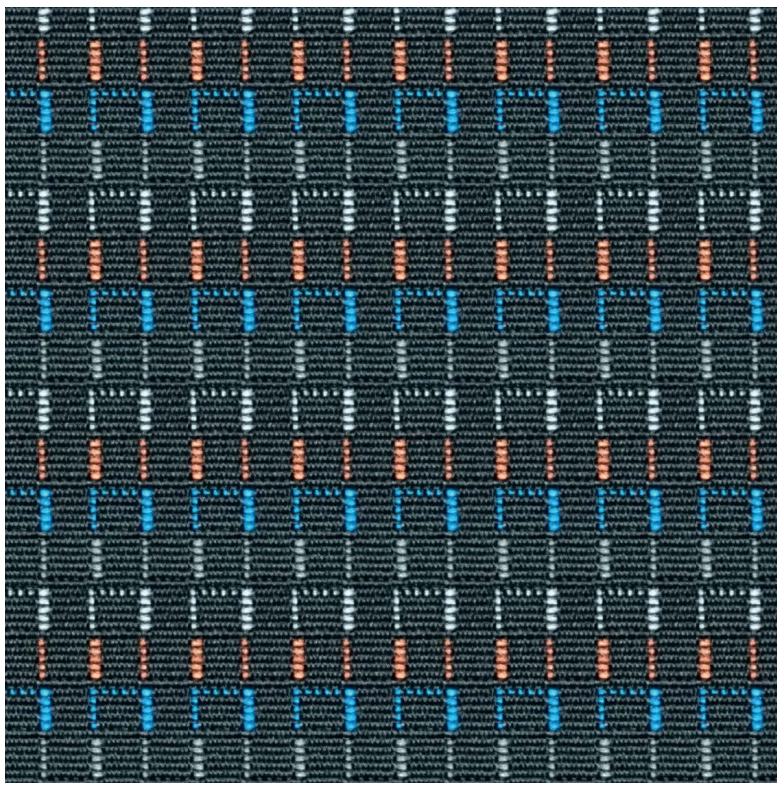


**17" Mirabeau Hill Alloy**  
(Standard on GT)



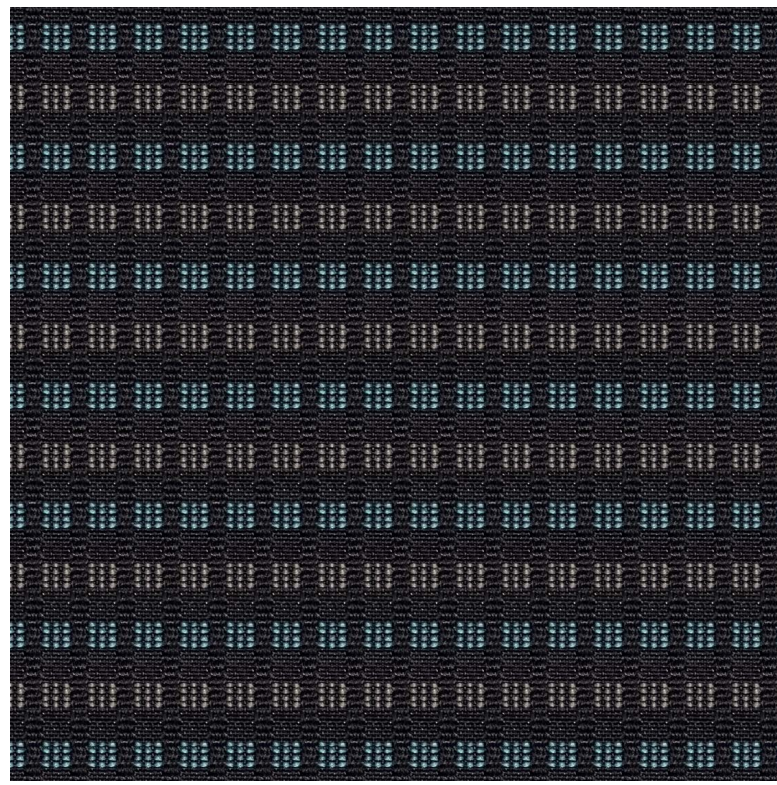
**16" Portago Gloss Black Alloy**  
(Optional on Comfortline and  
Highline with Black Style Package)

# Trims



## Tradition

(Standard on Trendline)



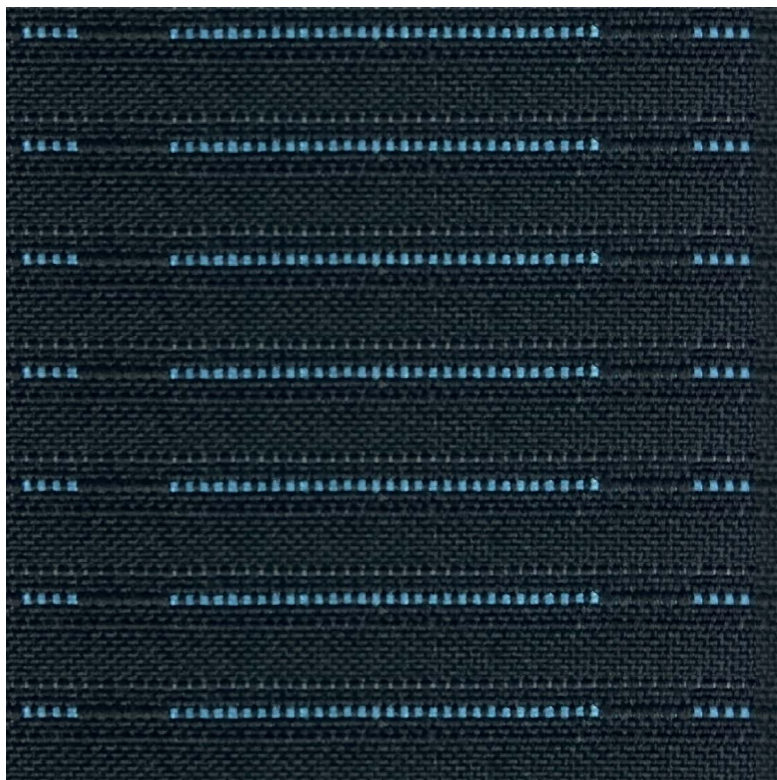
## City

(Standard on Comfortline)



## Cable

(Standard on Highline)



## Space

(Standard on GT)



# Colours



## Solid paint finishes



Pure White

## Metallic paint finishes



Reef Blue



Limestone Grey



Reflex Silver

## Pearlescent paint finishes



Reef Blue with Black Style Package

