

# Volkswagen Rally 2016

15 & 16 July



MSA Permit No:  
14439

## Great expectations for the Volkswagen Rally

**W**e are pleased to be sponsoring this rally again in 2016. The Volkswagen Rally has become an institution and is now in its 34th year.

Whilst Volkswagen has not always participated with a works team, there have always been Volkswagens competing and this year is no exception.

We wish all the teams an exciting and competitive weekend which will allow the best in each class to come through and once again prove that motorsport remains a favourite South African past time.

Last year I attended my first Volkswagen Rally and was excited to see the public support which included many families having a

great day out. I encourage all of the residents of the Metro and surrounds to attend all or some of the 12 stages on Friday and Saturday.

The Algoa Motorsport Club have once again done a fine job in securing a mix of the best rallying roads which will test the rally drivers' ability whilst thrilling the spectators on both dirt and tar.

A big thank you to the organisers, the marshals, medics and of course the service crews without whom a successful and safe rally could not be staged.

To the teams that have travelled from around the country, welcome to one of the best places in South Africa. We trust that you will have a great stay here in Port Elizabeth.

I look forward to starting the rally at our Factory in Uitenhage and seeing many of you on some



of the stages during the course of the Rally.

**Thomas Schaefer**  
Chairman and Managing Director  
Volkswagen Group South Africa



Paul Franken and Pierre Arries will be in action at the Volkswagen Rally, campaigning in the S1600 category. Photo: Dave Ledbitter

## An exciting Volkswagen Rally awaits motorsport fans

**T**he ever-popular national motorsport event that is the Volkswagen Rally takes place on Friday and Saturday, July 15 and 16, bringing competitors from across the country to compete in one of the best rallies on the annual calendar.

Every year the VW Rally, now running for the 34th time, relies on the support and dedication of many people in order to be a successful round of the South African National Rally Championship. When reading through this guide you will see the logos belonging to companies that support the Algoa Rally Club in its efforts - and some of these logos appear year after year thanks to unwavering support - for which we are very grateful.

What you will not see is the many names that belong on that list of supporters. Late nights, early

mornings and tireless effort from individuals that put their very best into making the VW Rally what it is today.

It would be impossible to name every single person, but all of their efforts, from the smallest gesture to the commitment of all of their time is appreciated and recognised - the rally would simply not exist without all of them.

There are 12 stages of competition that will take place - each posing a slightly different challenge to the competitors. We encourage rally fans to take advantage of the various spectating points and to enjoy the Volkswagen Rally with us.

Be safe, be considerate and make sure you keep an eye on the weather. Remember that much of the rally takes place on private property, please help us make the next VW Rally possible.



AC Potgieter and Tommy du Toit currently lie third in the S1600 national rally category. They will continue their charge at the Volkswagen Rally, trying to be the quickest over the 12 stages. Photo: Dave Ledbitter



Andrew Heine and Lloyd Brady campaign a Volkswagen Polo S1600 in the National Rally Championship. See them competing at the Volkswagen Rally this weekend. Photo: Dave Ledbitter

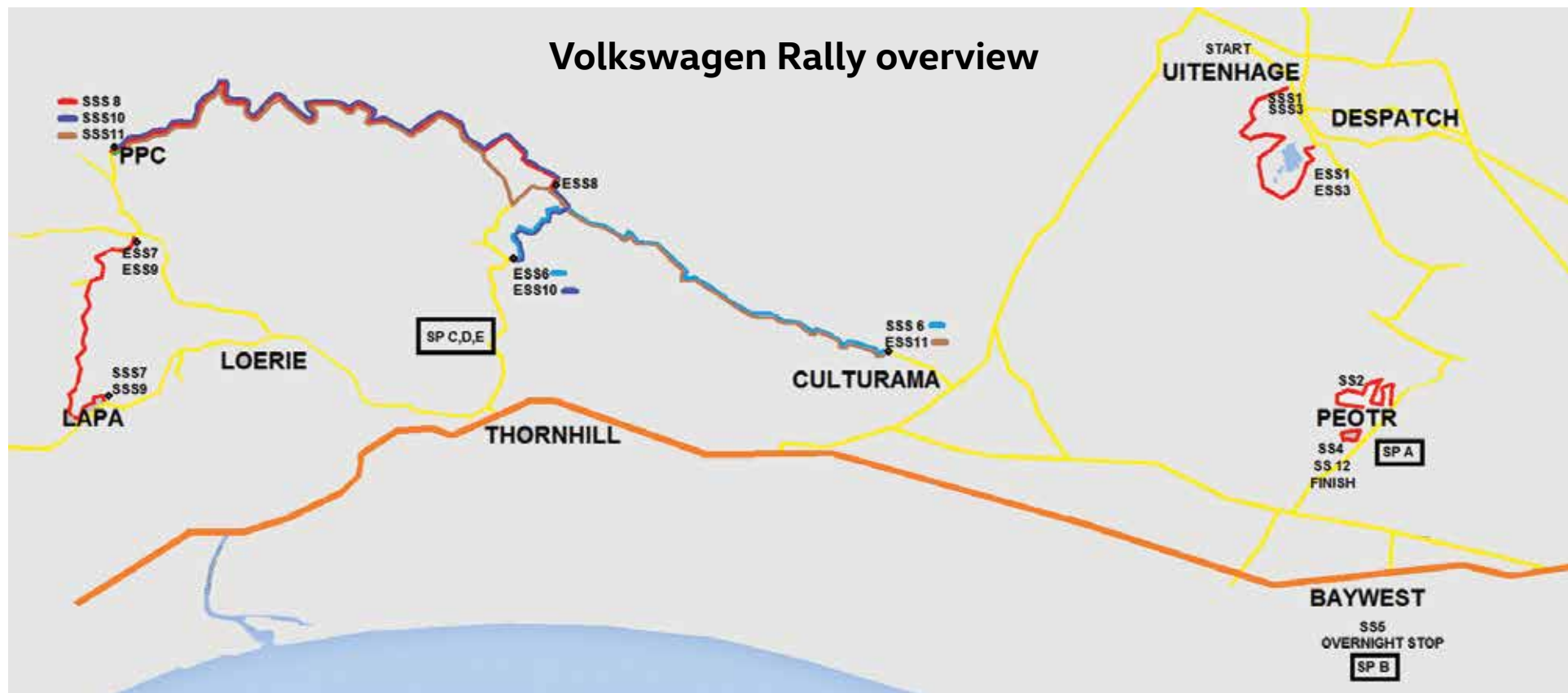
**Your safety at the Volkswagen Rally is your responsibility.**

**Please remain aware of your surroundings and follow instructions from officials at all times.**



# Volkswagen Rally 2016

## Volkswagen Rally overview



**Day One**  
Starting Point  
Auto Pavilion

**Stage One**  
Jachtvlakte 13:55

**Stage Three**  
Jachtvlakte 16:05

AutoPavilion to Jachtvlakte

Two viewing options for stage one. Either spectate at the start or at the mid-point of the stage.

From VW AutoPavilion proceed towards Despatch, the direction of VW Dealer Market Square  
0.00 Zero your trip at the Traffic light (Marconi Str) and proceed STRAIGHT  
0.66 Turn RIGHT to view the START of the STAGE (PeoplePavillion) - OPTION 1  
1.20 Park on Left to Spectate You may walk into the stage and view the cars make a Right sweep over a narrow bridge.

(See instructions for alternative Mid Point spectating below)

0.66 Straight on  
1.15 Keep Right Lane  
1.61 Stop. STRAIGHT on (Bethelsdorp M10)  
2.26 Turn Right onto Gravel Road. Follow this main road until Road block +- 1km

You may walk into the stage and view the cars make a 90 Right. Mid Stage viewpoint

**Best viewing choices:**  
Choose stage one and three  
**OR**  
Choose stage two and four

**Stage Two**  
Mission Road 14:31

**Stage Four**  
Mission Road 16:50

Jachtvlakte to Mission Road Stage 2 and 4

From the Stage 1 and 3 Start viewing point.  
Proceed back to T-Junction  
0.00 STOP. Turn RIGHT assume 60km/h  
0.55 Keep Right Lane  
1.01 Stop. STRAIGHT on (Bethelsdorp M10)  
1.66 SLOW DOWN. (spectating point B for stage one on RHS)

RESET your Trip at turn off to right. Proceed STRAIGHT on, follow instruction from 0.94

From Mid Stage One viewpoint. Proceed back to T-Junction (tar road)

0.00 RESET your Trip and Turn RIGHT onto tar

0.94 STRAIGHT on (ESS 1+3 on RHS)  
3.05 CAUTION : POSSIBLE DETOUR and pedestrians  
5.93 Turn RIGHT (M10 Bethelsdorp) assume 60km/h  
7.43 60 km/h  
7.61 Speedbump - SLOW !!  
8.31 STOP. Turn LEFT (M10 Port Elizabeth) 70 km/h  
10.00 STRAIGHT on (Nooitgedacht)  
12.32 70 km/h  
12.67 Traffic light. Turn RIGHT (Lawrence Erasmus/Mission Rd)  
15.00 STRAIGHT on (Algoa Frail Care) (SSS 2 on RHS)  
16.19 Turn right into PEOTR, then left past ticket office

**Stage Five**  
Baywest Mall 18:00

Jachtvlakte to BayWest Mall JACHTVLAKTE SS1+3 TO BAYWEST MALL SS5 via STAGE 2/4

From the Stage 1/3 Start view point.  
Proceed back to T-Junction  
0.00 STOP. Turn RIGHT assume 60km/h  
0.55 Keep Right Lane  
1.01 Stop. STRAIGHT on (Bethelsdorp M10)  
1.66 SLOW DOWN. (spectating point B for stage one on RHS)

RESET your Trip at turn off to Right.

Proceed STRAIGHT on AND FOLLOW INSTRUCTIONS BELOW

From Mid Stage one viewpoint. Proceed back to T-Junction (tar road)  
0.00 RESET your Trip and Turn RIGHT onto tar  
0.94 STRAIGHT on (ESS 1+3 on RHS)  
3.05 CAUTION : POSSIBLE DETOUR and pedestrians  
5.93 Turn RIGHT (M10 Bethelsdorp) assume 60km/h  
7.43 60 km/h  
7.61 Speedbump - SLOW !!

8.31 STOP. Turn LEFT (M10 Port Elizabeth) 70 km/h  
10.00 STRAIGHT on (Nooitgedacht)  
12.32 70 km/h  
12.67 Traffic light. Turn RIGHT (Lawrence Erasmus/Mission Rd)  
15.00 STRAIGHT on (Algoa Frail Care) (SSS 2 on RHS)  
16.19 STRAIGHT on (Entrance PEOTR) (ESS 2 on RHS)  
17.95 Caution: Stray animals next 2 km  
21.39 Stop. T-junction. Turn LEFT (R102 PE) assume 80km/h  
24.83 Traffic Lights. STRAIGHT on  
25.54 Traffic Lights. Turn RIGHT (Baywest Blvd)  
25.67 80 km/h  
26.49 60 km/h  
26.79 Traffic Lights. STRAIGHT on (N2 Grahamstown)  
27.30 Traffic Lights. STRAIGHT on (N2 Humansdorp)  
27.53 Traffic Lights. STRAIGHT on (Entrance 2)  
27.68 Traffic Circle. Take 2nd Exit (Turn Right)  
28.18 Turn RIGHT (Entrance 3) Find Parking on the upper level to view stage.  
Stage to be viewed from upper level entrance 3, and also from ground level entrance 4

Do Not Park at random places outside the Mall, security is very strict.

**WARNING**  
**MOTORSPORT IS DANGEROUS**

In view of the high speeds attained by the competitors, accidents can happen. The promoters and organisers of this rally cannot guarantee your safety. You attend the event at your own risk. Every reasonable precaution has been taken to make the event as safe as possible, but you must obey marshals and officials at all times to minimise any risks.

**Please remain within designated spectator areas at all times. Where danger areas have been taped or fenced off, please refrain from standing in, or walking through, these areas.**



## Day Two

### Starting point: Baywest Mall

The Volkswagen Rally action on day two takes place mainly in the Longmore Forest and Spekboom Lapa, both offering spectacular viewing points. Use Baywest Mall as your starting reference point and follow the directions to Point A in the Longmore Forest (the Service Park). Directions to the stages will be from this point for all Longmore stages.

From Baywest Mall, continue on N2 towards Cape Town for 31km  
Keep Left Exit 702 (Hankey/Patensie)  
0.00 Stop. RESET TRIP. Turn

RIGHT (R331 Hankey)  
0.40 Straight on towards Spekboom Lapa via Loerie or **TURN RIGHT onto gravel** (Cape Pine Longmore) 40 km/h  
0.49 Railway crossing - inactive and keep RIGHT at fork  
**SWITCH YOUR HEADLIGHTS ON AND PROCEED WITH CAUTION**  
2.58 Onto cement road  
2.78 Single lane bridges and twisty road  
3.18 **CAUTION** : Single lane bridge  
4.28 Onto gravel road and follow main road  
4.63 Through gate  
5.25 **STRAIGHT** on  
5.63 Keep Left on Main Road  
5.75 **POINT A**  
This is your starting point to the Forest Spectating points



Local rally fans can look out for a number of regional competitors from the Algoa Rally Club, including Rufus Neethling and Henry Adams that will compete in the Volkswagen Rally.  
Photo: Morné Condon

Your safety at the Volkswagen Rally is your responsibility. Please remain aware of your surroundings and follow instructions from officials at all times.

### WARNING MOTORSPORT IS DANGEROUS

In view of the high speeds attained by the competitors, accidents can happen. The promoters and organisers of this rally cannot guarantee your safety. You attend the event at your own risk. Every reasonable precaution has been taken to make the event as safe as possible, but you must obey marshals and officials at all times to minimise any risks.

### Longmore Service Park (A) to spectating points

SWITCH YOUR HEADLIGHTS ON AND PROCEED WITH CAUTION

0.00 RESET TRIP at Point A  
Continue on Main Road. Speed Limit 40km/h  
0.40 Keep RIGHT. Point B  
2.30 Fork keep LEFT. Point C - End Stage 6 / 10  
3.20 Turn RIGHT. Point D  
5.34 Point E - This is a Major reference point. (Concrete pipes) This point will be Spectating for Stage 11

Turn LEFT for Spectating Stage 8 (Point F) - 2km from E

Straight on will lead you to Spectating for Stage 6 (Point H)  
Stage 10 (Point G)  
5.34 Point E - STRAIGHT on  
6.36 Fork Keep RIGHT.  
End Stage 8 on Left. Also Alternative Spectating Stage 10.  
6.61 Point G. STRAIGHT on.  
This point will be Spectating for Stage 10.  
5.40 Point H - This point will be Spectating for Stage 6.

### VERY IMPORTANT FOR SPECTATORS

THE ROAD BETWEEN POINT G AND POINT H IS PART OF STAGE 10.

When Stage 6 is complete you must move to Point F

### Stage Six

Culturama 07:31  
Point H

### Stage Seven

Lapa Tower 09:17

### Stage Eight

PPC Jelly 09:43  
Point F

### Stage Nine

Lapa Tower 11:39

### Stage Ten

PPC Rama 12:05  
Point G

### Stage Eleven

PPC Ultimate 14:08  
Point E

THE ROAD BETWEEN POINT F AND POINT H IS PART OF STAGE 11.

When Stage 10 is complete you must move to Point E

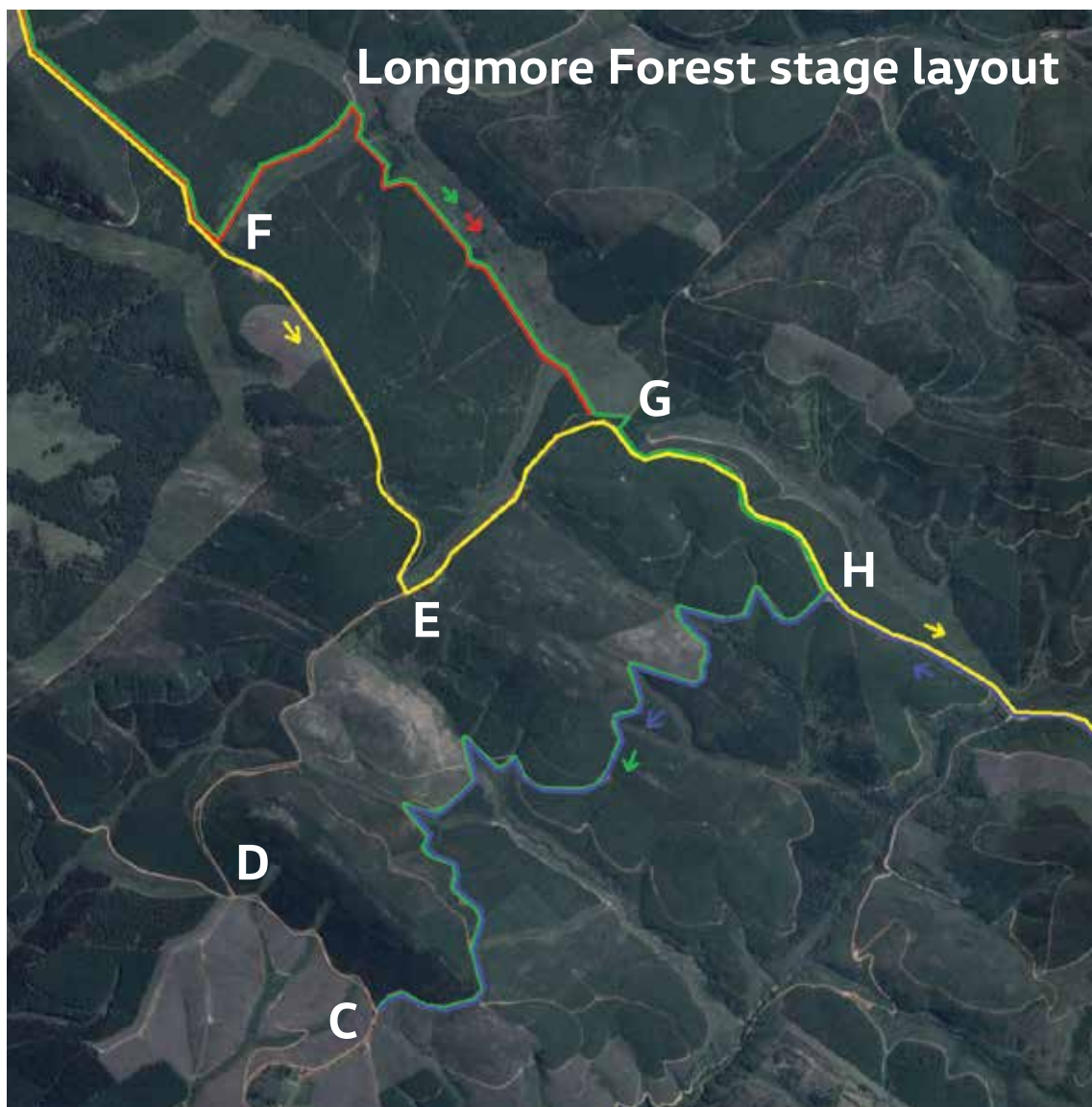
MAKE SURE YOUR CAR IS REMOVED BEFORE THESE STAGES START

### Stage Twelve

PEOTR SS 15:26

Spec - S33°53.913' E25°27.525'

**PEOTR is located on Mission Road and hosts the final stage for competitors in the VW Rally.**



# Volkswagen Rally 2016

## Programme your rally

Rally HQ - BayWest Mall  
S33°57.020' E25°27.556'

Rally HQ + Post-scrutineering  
PEOTR  
S33°53.873' E25°27.565'

Scrutineering  
Tavcor Volkswagen - William Moffett  
S33°57.829' E25°33.258'

Auto Pavilion  
S33°47.070' E25°25.241'

Service Park - BayWest Mall  
S33°53.815' E25°27.613'

Service Park - Longmore Forest  
S33°51.804' E25°07.269'

Service Park - PEOTR  
S33°53.815' E25°27.613'

Stage 1 - Jachtlakte - 13:55

Start S33°47.603' E25°25.301'

End S33°48.631' E25°26.144'

Spec A - S33°47.629' E25°25.348'

Spec B - S33°48.618' E25°25.412'

Stage 2 - Mission Road - 14:31

Start S33°53.479' E25°28.449'

End S33°54.089' E25°27.710'

Spec S33°53.792' E25°27.565'

Stage 3 - Jachtlakte - 16:05

Start S33°47.603' E25°25.301'

End S33°48.631' E25°26.144'

Spec A - S33°47.629' E25°25.348'

Spec B - S33°48.618' E25°25.412'

Stage 4 - PEOTR SS - 16:50  
Start S33°53.929' E25°27.639'  
End S33°53.895' E25°27.572'  
Spec S33°53.913' E25°27.525'

Stage 5 - BayWest - 18:00  
Start S33°56.991' E25°27.639'  
End S33°57.212' E25°27.603'  
Spec S33°53.913' E25°27.525'

Stage 6 - Culturama - 07:31  
Start S33°52.539' E25°16.188'  
End S33°50.841' E25°07.516'  
Spec S33°53.913' E25°27.525'

Stage 7 - Lapa Tower - 09:17  
Start S33°53.609' E24°58.465'  
End S33°50.418' E24°58.890'  
Spec A S33°53.634' E24°48.475'  
Spec B S33°52.322' E24°57.788'

Stage 8 - PPC Jelly - 09:43  
Start S33°48.754' E24°58.460'  
End S33°49.372' E25°08.139'  
Spec S33°49.831' E25°08.846'

Stage 9 - Lapa Tower - 11:39  
Start S33°53.609' E24°58.465'  
End S33°50.418' E24°58.890'  
Spec A S33°53.634' E24°48.475'  
Spec B S33°52.322' E24°57.788'

Stage 10 - PPC Rama - 12:05  
Start S33°48.754' E24°58.460'  
End S33°50.841' E25°07.516'  
Spec S33°50.863' E25°07.505'

## GPS Co-ordinates



Stage 11 - PPC Ultimate - 14:08  
Start S33°48.754' E24°58.460'  
End S33°52.540' E25°16.183'  
Spec S33°53.913' E25°27.525'

Stage 12 - PEOTR SS - 15:26  
Start S33°53.929' E25°27.639'  
End S33°53.895' E25°27.572'  
Spec S33°53.913' E25°27.525'

## WARNING MOTORSPORT IS DANGEROUS

In view of the high speeds attained by the competitors, accidents can happen. The promoters and organisers of this rally cannot guarantee your safety. You attend the event at your own risk. Every reasonable precaution has been taken to make the event as safe as possible, but you must obey marshals and officials at all times to minimise any risks.



Algoa Rally Club regional competitors Steph and Ilario Pieterse will also compete in the Volkswagen Rally.

Photo: Morné Condon

## Volkswagen Rally Entry List 2016

Please remain within designated spectator areas at all times. Where danger areas have been taped or fenced off, please refrain from standing in, or walking through, these areas.

## Volkswagen Rally winners

1983 - S vd Merwe	F Boshoff	Audi quattro
1984 - S vd Merwe	F Boshoff	Audi quattro
1985 - S vd Merwe	F Boshoff	Audi quattro
1986 - G Mortimer	B Woodhead	Audi quattro
1987 - G Mortimer	F Boshoff	Audi quattro
1988 - S Damseaux	V Bonafede	Toyota Conquest 4x4
1989 - S Damseaux	V Bonafede	Toyota Conquest 4x4
1990 - H Grobler	P Swanepoel	Nissan Sentra 4x4
1991 - S vd Merwe	F Boshoff	Ford Laser 4x4
1992 - S Damseaux	V Bonafede	Toyota Conquest 4x4
1993 - S Damseaux	V Bonafede	Toyota Conquest 4x4
1994 - H Grobler	M Botha	Nissan Sentra 4X4
1995 - S Damseaux	V Bonafede	Toyota Conquest 4X4
1996 - S Damseaux	V Bonafede	Toyota Conquest 4x4
1997 - S vd Merwe	F Boshoff	Daewoo Cielo S16
1998 - J Habig	D Judd	VW Golf 4 A8
1999 - J Habig	D Judd	VW Golf 4 A8
2000 - S Damseaux	G Hodgson	Toyota Corolla RSI A6
2001 - S Damseaux	G Hodgson	Toyota Corolla A8
2002 - E Kuun	P Arries	VW Golf 4 A8
2003 - S Damseaux	R Paisley	Toyota RunX A8
2004 - S Damseaux	R Paisley	Toyota RunX A8
2005 - S Damseaux	R Paisley	Toyota RunX S2000
2006 - J Habig	D Judd	VW Polo S2000
2007 - S Damseaux	R Paisley	Toyota RunX S2000
2008 - M Cronje	R Paisley	Toyota RunX S2000
2009 - H Fekken	P Arries	VW Polo S2000
2010 - J Gemmell	D Sturrock	Toyota Auris S2000
2011 - M Cronje	R Houghton	Ford Fiesta S2000
2012 - J Gemmell	C Swan	Toyota Auris S2000
2013 - M Cronje	R Houghton	Ford Fiesta S2000
2014 - M Cronje	R Houghton	Ford Fiesta S2000
2015 - L Poulter	E Coetzee	Toyota Yaris S2000

NO	ENTRANT	DRIVER	CO-DRIVER	CLASS AND CAR
3	Toyota Gazoo	Giniel de Villiers	Carolyn Swan	S2000 Toyota Yaris
23	Toyota Gazoo	Leeroy Poulter	Elvene Coetzee	S2000 Toyota Yaris
16	Luke Botha	Luke Botha	Barry White	S2000 Ford Fiesta
39	Ernie vd Walt	Ernie van der Walt	Gerhard Snyman	S2000 Toyota Yaris
62	Paul Franken	Paul Franken	Pierre Arries	S1600 VW Polo
65	A Haigh-Smith	Ashley Haigh-Smith	Niall Burns	S1600 Ford Fiesta
71	S Vacy-Lyle	Guy Botterill	Simon Vacy-Lyle	S1600 Toyota Etios
83	Andrew Heine	Andrew Heine	Lloyd Brady	S1600 VW Polo
96	Richard Leeke	Richard III Leeke	Henry Kohne	S1600 Ford Fiesta
132	G Smalberger	George Smalberger	Chris Brand	S1600 VW Polo
555	Bryan Heine	Bryan Heine	Keith Heine	NRC2/S3 Datsun SSS

### 50K CLUB CHAMPIONSHIP

86	D Coetzee			S3 Toyota Conquest
431	JP Jacobs	Ismaeel Davids	JP Jacobs	S2 Toyota Corolla
432	A Haigh-Smith	Andy Haigh-Smith	Kevin Aldridge	S2 Mitsubishi Lancer
501	J Viljoen	Johan Viljoen	Juane Viljoen	S3 VW Polo
502	R Schmidt	Riekus Schmidt	Sherilee Pieterse	S2 VW Polo
504	M Malherbe	Etienne Malherbe	Mauritz Malherbe	S3 Datsun 160U SSS
505	D Engels	Deon Engels	Martin Kleingeld	S1 VW Citi Golf
508	I Roberts	Ian Roberts	Kate Roberts	S1 VW Citi Golf
512	R Neethling	Rufus Neethling	Henry Adams	S2 VW Polo
516	N Keeton	Neill Keeton	Ryle Murray	S1 VW Citi Golf
519	R Bartle	Ross Bartle	Matt Kohler	S3 VW Polo Vivo
520	M Irvin	Iddo Steyn	Mark Irvine	S3 Ford Escort
522	D Murphy	Darren Murphy	Roxanne Bartle	S1 VW Citi Golf
528	P van der Berg	Pierre van der Berg	Riaan van Hyssteen	S1 VW Polo
542	A Bezuidenhout	Ruan Gerber	Ashley Bezuidenhout	S1 VW Citi Golf
543	N Vosloo	Neels Vosloo	Kevin Futcher	S2 Toyota Yaris
544	K McGregor	Keith McGregor	Slade Lottering	S3 Daewoo Celio
545	J Vosloo	Jan Vosloo	Ria Jansen	S1 Toyota Yaris
548	J du Toit	Jacques du Toit	Ronald Rens	S3 Nissan Sentra
551	G&G Projects	Gregory Heine	Gary Heine	S1 VW Citi Golf
553	J Cronje	Jakes Cronje	Heiko Hnidey	S4 VW Beetle
554	S Pieterse	Steph Pieterse	Ilario Pieterse	S1 VW Citi Golf
569	S Joubert	Simon Joubert		S1 VW Golf
588	A Dillon	Andrew Dillon	Justin van Acker	S1 VW Golf



FORD PERFORMANCE



TOYOTA



Motorsport